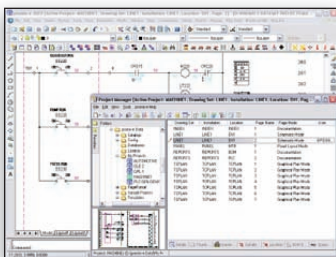




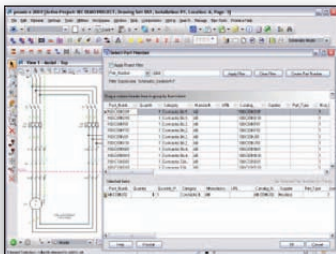
promis•e®

A Comprehensive Line of Electrical Control System Design Tools

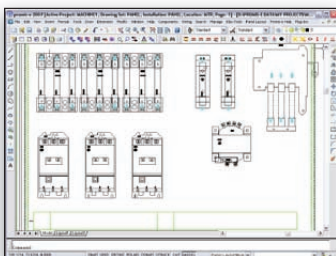
promis•e is the world's leading control system design software. It was developed for difficult tasks that involve electrical schematics, connection lists, panel layouts, bills of material, and more. promis•e integrates all these functions for quick, accurate, and efficient results.



A project-based workflow organizes and interconnects the design.



An integrated parts database incorporates engineering data.



Users can create panel layout drawings that are linked to schematics

Project-based Workflow Supports Intelligent Designs

promis•e organizes work into projects, linking drawing pages for cross referencing, error checking, and list generation. Changes made to one part of the project are automatically reflected in the rest of the project.

Schematic Design Tools Save Time

With built-in symbol libraries, macros, and cut-and-paste capabilities, promis•e provides quick generation of control system schematics. System logic also provides automatic device ID assignment, real-time automatic cross referencing, automatic wire numbering, and error checking. Users can also automatically generate schematics from commands stored in a spreadsheet file. Truly an international product, promis•e comes equipped with standard IEC and ANSI-IEEE page formats. Symbol libraries are available for ANSI and IEC electrical applications as well as for hydraulic, pneumatic, and process control drawings.

Error Checking Improves Design Quality

As drawings are created, promis•e alerts the user to possible errors, which reduces the amount of manual checking, improves the overall accuracy of the drawing, and prevents costly corrections. Error conditions include short circuits, gaps in the circuit, duplicate device IDs, duplicate wire numbers, missing part numbers, missing cross references, and over-assigned contacts (for example, five contacts for a four pole relay).

Parts Database Integrates Engineering Data

promis•e includes a parts database that allows users to associate components in the design with specific parts information. It also facilitates the generation of parts lists, panel layouts, and other documents. Parts database files are available for many leading equipment manufacturers, which saves project team members from having to manually enter data. Users can also import existing parts data, including parts data and attributes from AutoPLANT® software.

Fast and Accurate Report Generation

A parts database linked to the schematic provides superior documentation. This enables bills of material, purchase order lists, panel layouts, terminal plans, wire lists, and wiring diagrams to be generated automatically, based on drawings and other system information. This process decreases the number of errors, and quickly reflects all design revisions in the reports.

Data Exchange and Distributed Engineering Maximizes Collaboration

With promis•e, users can exchange project data with other applications such as AutoPLANT, Bentley Instrumentation and Wiring, Bentley Data Manager, and PLC programming software. The promis•e software is compatible with ProjectWise®, which provides robust, enterprise-level engineering content management and team collaboration capabilities to support the control design workflow..

System Requirements

Operating System:

Windows XP Professional (SP2 or later),
Windows 7 (32 or 64 bit versions)

CAD Software:

For AutoCAD add-on version - AutoCAD
2010, 2011, 2012 (32- or 64-bit versions)

For stand-alone version - no additional
CAD software required (MicroStation
CAD engine is built-in)

Database Software:

SQL Servers: SQL Server 2005,
SQL Express 2005, and SQL Server
2008 (an express version of SQL Server
is included);

Oracle Servers: 10g and 11g;
Oracle Clients: 11g

Processor:

Intel® or AMD® processor 3.0 GHz
or greater

Memory:

2 GB recommended

Hard Disk:

650 MB free space

Video:

Graphics card supported by DirectX 9.0c

promis•e At-A-Glance

General/System Features

- Online tutorial
- User interface in foreign languages
- Command protection
- One-click navigation
- Search tool
- Fully open API
- Floating network license
- Project-wide data edit
- Integrates with ProjectWise for content management and distributed engineering
- Can operate in Citrix environment (XenApp 5.0 or 6.0)

Drawing/Design Features

- Project-based design organization
- ANSI/IEEE or IEC electrical symbol catalog included
- Optional catalogs: hydraulic, pneumatic, and ISA
- Manufacturers parts databases and symbol catalog
- Import parts data and attributes from AutoPLANT
- Ladder builder
- Global find/replace wire property
- User-definable device tag formats
- User-definable wire layering
- User-definable wire tag formats
- Cable termination diagrams
- Automated balloon callouts
- Panel layout mode
- BOM explorer
- Dynamic symbol text
- Global find/replace symbols and

- symbol properties
- Automatic component alignment
- Automatic wire numbering
- No page limits
- Automatic page numbering
- Automatic page save
- Automatic project copy
- Page copy, rename, move
- Global title block replace
- Automatic device tagging
- Custom symbol creation
- User-definable circuit macros and symbols
- Symbol migration tool
- AutoCAD block migration tool
- Intelligent off-page wire references
- Automatic wire/line break and heal
- Automated circuit copy
- Wire crossing/connection preferences
- User-definable wire property display
- Catalog manager
- Cable manager
- PLC schematic generator
- Automatic PLC addressing
- PLC I/O import
- Automated symbol rotation
- Real-time cross-referencing across multiple pages
- Multi-user/discipline collaboration
- Multiple undo/redo capabilities
- Instantaneous real-time error checking
- Forced wire routing
- Dynamic wire diagrams
- Terminal/pin-plug manager

- Graphical terminal/pin-plug plans
- Spare parts utility
- Multi-language drawing text
- Drawing mode manager
- Automatic wire routing
- Equipment numbers (generic part numbers)
- Export graphics and data through i-models

Reports and Documentation

- Automatic report generation
- Bills of material
- Wire list
- Wire labels
- Wire length calculation reports
- Cable list
- Terminal-plug list
- PLC list
- Job costing report
- Field wire list
- Revision history reports
- Custom report designer
- Output reports to TXT, CSV, HTML, RTF, PDF, XLS, MHT files

Special Utilities

- Project builder
- Komax wire wizard
- Hoffman panel builder
- Panduit selection tool

* promis•e is offered in levels with different combinations of these functions. For additional information, visit www.bentley.com/promis•e.

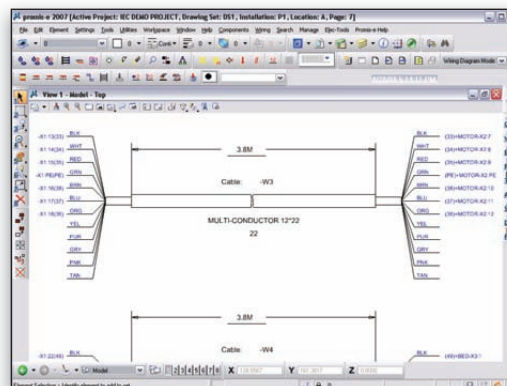
Find out about Bentley
at: www.bentley.com

Contact Bentley

1-800-BENTLEY (1-800-236-8539)
Outside the US +1 610-458-5000

Global Office Listings

www.bentley.com/contact



The cable diagrams in promis•e display up-to-date connection information.

Distribution	Device Tag	Location	Page	Line No.	Function Text	Qty/Unit	Part Number	Description
DIS10	BAV1	1	10			1	100AR-ABD	ROD OPERATE
MFR10B	BAV1	1	10					CONVEYOR MOTOR
TER11A	BAV1	1	10					
TER12A	BAV1	1	11					
TER13A	BAV1	1	12					
DIS17	BAV2	1	17			1	100AR-ABD	ROD OPERATE
MFR17F	BAV2	1	17					PUMP MOTOR
TER11A	BAV2	1	17					
TER12A	BAV2	1	18					
TER13A	BAV2	1	19					
DIS14	BAV2	1	24			1	100AR-ABD	ROD OPERATE
MFR24	BAV2	1	24					PRESS MOTOR
TER15A	BAV2	1	24					
TER16A	BAV2	1	25					

Users can automatically generate bills of material and other reports.