



ProjectWise® Geospatial Management V8i

Spatially Relating Content in ProjectWise®

ProjectWise Geospatial Management extends the ProjectWise environment with a geospatial view and gives geospatial context to any information. Drawings, maps, models, images, vendor-specific GIS formats, and business documents in their originally intended form can all be related spatially in ProjectWise. This provides users with an organization system that is practical and easily deployable, the common denominator of which is spatial location.



Users can quickly create background maps with rich data.

Practical Tools to Index Documents Spatially

Integrated map management, dynamic coordinate system support, and practical spatial indexing tools provide users with the ability to get up and running quickly and to routinely incorporate new content from their projects and operations. Information that is already spatially aware, such as geo-referenced DGN, images, or other GIS data, is automatically recognized and placed in the appropriate location.

enable the user to quickly locate a region of interest. The result can be displayed as a simple list of documents, or graphically on a map. Geospatial views can be used to display documents with symbology associated to document properties such as author, time, and workflow state.

A New Approach to Managing Information

The system manages information using a unique approach that relies on indexing rather than converting information to a common format. This allows information to remain in its original form where it can be found, viewed, and edited using tools launched directly from the ProjectWise Geospatial Management map interface. Use spatial and non-spatial criteria to find information, and ensure, with spatial referencing, that information in a given area or location is never missed.

Esri ArcMap and MapInfo Integration

Working with information created using Esri GIS applications is easy with ProjectWise Geospatial Management. ProjectWise Geospatial Management provides support for ArcMAP iDesktop integration and MXD, MXT, SHP, BIL, and BIP file formats. They are automatically spatially referenced when added to the ProjectWise store. The relationship between the ArcMap project file and its content is managed and handy ProjectWise tools are added into ArcMap.



ProjectWise Geospatial Management manages complex GIS file formats, including Esri ArcMAP, Esri Shapefile, and Esri Personal Geodatabase.

Manage Virtually Any Kind of Information

ProjectWise Geospatial Management capitalizes on the powerful capabilities of ProjectWise to manage virtually any information type in a spatial environment. Users can relate drawings, maps, models, images, vendor-specific GIS formats, and business documents spatially in their original form in ProjectWise. This includes geospatially aware information created by GIS and geo-referenced imagery, as well as information stored in PDFs, spreadsheets, text documents, and other formats.

ProjectWise iDesktop for MapInfo adds ProjectWise functionality to support MapInfo data. MapInfo file formats can now be stored in ProjectWise, and users can scan the relationship between TAB (table document) and WOR (workspace document) files in order to create sets.



Users can search for data with geospatial and non-geospatial search criteria.

Intuitive Spatial Navigation

ProjectWise Geospatial Management provides intuitive access to a wealth of spatially indexed content. Once spatial locations are registered, files, documents, or sets can be located through the map-based interface. Any combination of spatial and nonspatial criteria can constrain a query, and can be used in combination with spatial navigation tools that

System Requirements

Please refer to the "Requirements" section of the ProjectWise System readme: <ftp://ftp.bentley.com/pub/help/projectwise/081107443en/readme.htm>

Feature or Component Spatial Indexing Prerequisites:
ProjectWise Orchestration Framework Service, ProjectWise Automation Service, and MicroStation V8i are prerequisites if this server is used to host Document Processors (Thumbnail Extractor, Full Text Extractor, File Properties Extractor)

ProjectWise Explorer Client Workstation
Refer to the "Requirements" section of the ProjectWise System readme: <ftp://ftp.bentley.com/pub/help/projectwise/081107107en/readme.htm>

Find out about Bentley at: www.bentley.com

Contact Bentley
1-800-BENTLEY (1-800-236-8539)
Outside the US +1 610-458-5000

Global Office Listings
www.bentley.com/contact

ProjectWise Geospatial Management At-A-Glance

Unique Federated Information Management Approach

- Index rather than convert
- Keep the richness and meaning of your information in your desired formats (no conversion)
- Find information via spatial or non-spatial criteria or a combination
- Utilize viewing and editing tools that can be launched directly from the map interface
- Integrate multiple applications
 - » MicroStation® and all MicroStation-based applications
 - » AutoCAD
 - » ArcMap (Esri)
 - » MapInfo
 - » Microsoft Office

Manage Virtually Any Kind of Information

- Graphical files
- Complex files
- Non-graphical documents
- Relational databases

Finding Information

- Search, query, and navigate all content – documents, components, and metadata – in database-like fashion
- Constrain spatial queries using a rectangular or polygonal target area

- Search using rich queries combining spatial (geographical location) and non-spatial (author, date, workflow, etc.) criteria
- Search distributed file servers and databases, not merely at the file and document level, but at the level of their content
- Produce project-wide reports and statistics or create ad hoc queries

Background Maps

- Use as reference maps to show the region of interest
- Power background maps using Bentley® Geo Web Publisher®
- Compose multiple-layer maps generated from multiple data sources:
 - » DGN
 - » DWG
 - » SHP
 - » MIF/MID
 - » TAB
 - » Oracle Spatial
 - » WMS
 - » Raster

Integrated Coordinate System Support

- Index content to a universal coordinate system while preserving the original system

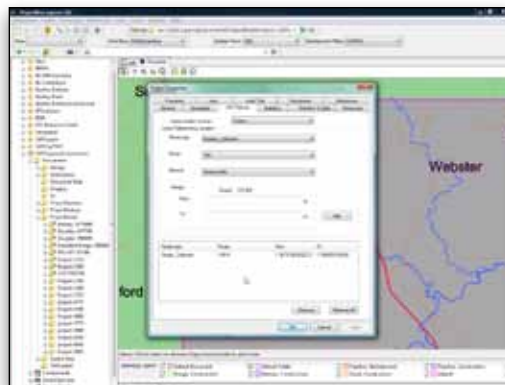
- Search across boundaries of different coordinate systems
- Create customized coordinate systems from standard coordinate systems
- Re-project document/file footprints on the fly
- Includes a comprehensive library of more than 4,000 coordinate systems

Esri ArcMap Integration

- Integrates with Esri ArcMap iDesktop
- Provides Esri file format support for MXD, MXT, SHP, BIL, and BIP
- Provides automatic spatial reference when added to the ProjectWise store
- Manages the relationship between the ArcMap project file and its content
- Adds ProjectWise tools into ArcMap

MapInfo Integration

- Provides MapInfo iDesktop integration
- Provides MapInfo file format support
- Provides automatic spatial reference when added to the ProjectWise store
- Manages the relationship between the MapInfo project file and its content
- Adds ProjectWise tools into the MapInfo application



Users can reference documents and projects along linear assets such as roads, pipelines, and railways.



Users can index the content of DGN files and find data across multiple files.