



Project Summary

Organization:

Hidrocantábrico Energía

Solution

Utilities

Location

Oviedo, Spain

Project Objectives

- Update the engineering content management system to replace an obsolete system
- Improve the user experience of the engineering documentation management system
- Adopt a system with advanced security and privilege management
- Adopt a system with high scalability that can be rolled out to other departments

Product Used

ProjectWise

Fast Facts

- One of the largest energy companies in Spain and subsidiary of the Portuguese EDP group
- Controls 11 percent of the liberalized electricity market in the country and its turnover exceeds 2 billion Euros
- The company operates in 11 regions in Spain and serves 1.5 million customers
- Has been a Bentley user for 12 years
- The project has transformed the productivity of all systems users
- ProjectWise will soon be rolled out to other departments

Hidrocantábrico Energía Streamlines Management of Engineering Documentation

ProjectWise Provides Faster, More Secure Access to Engineering Documents

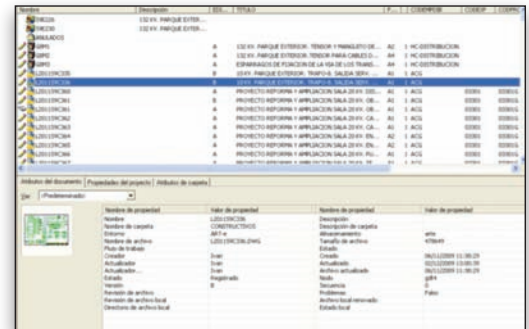
More Robust Program

When the networks department of Hidrocantábrico Energía, a leading energy company in Spain and subsidiary of the Portuguese EDP group, was notified of a mandatory upgrade to the company's AIM content management software, it had two choices: agree to the supplier's mandate or switch to a more robust program. Staying with the existing system, which its provider would no longer maintain, wasn't an option since it would expose the company to the risk of a system failure, and the now obsolete system was already slow in retrieving documents. Ultimately, Hidrocantábrico Energía was able to achieve faster, more secure access to its engineering documents through its deployment of Bentley's ProjectWise collaboration services.

"Comparing the two systems, the only strong point for the new AIM system was the fact that people in the company were already familiar with it. However, ProjectWise was far and away the right choice for our needs."

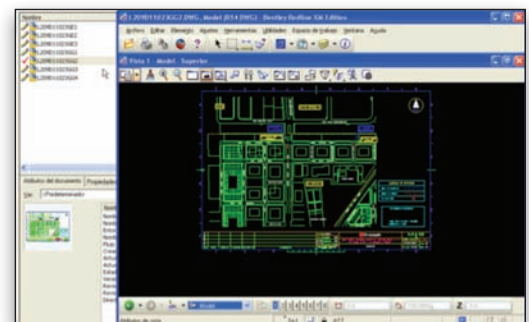
According to Manuel Arandojo, technical systems manager for Hidrocantábrico Energía, at the top of the company's requirements for a new content management system was the ability to handle a large amount and wide variety of content. The company, which specializes in gas, electricity, and renewable energy, operates in 11 regions, serves more than 1.5 million customers, controls 11 percent of the liberalized electricity market, and has a turnover that

exceeds 2 billion Euros. As a result, it regularly has a number of very large and varied projects in the works that generate a substantial amount of engineering content. This content includes everything from network design and as-built documents to wiring diagrams for the protection and control systems used in the company's substations. So its new system would need to be scalable and flexible.



ProjectWise delivers easy access to complex engineering documentation across the enterprise

In addition, HCE wanted a system that was in keeping with its



Bentley Redline is used by users who need read-only access to DGN and DWG files

“Our users needed just two hours of training on ProjectWise to get up and running.”

– Manuel Arandojo, technical systems manager for Hidrocantábrico Energía

Find out about Bentley at: www.bentley.com

Contact Bentley
1-800-BENTLEY (1-800-236-8539)
Outside the US +1 610-458-5000

Global Office Listings
www.bentley.com/contact

long-standing commitment to provide customers with only the highest quality service. For five years running, the company had been recognized for operating the best customer response center in the Spanish utilities market, and its goal was to bring this same quality of service to the “customers” of its engineering content management system. These included not only internal business users, but also the many external companies that work on HCE projects.

“Three additional criteria,” said Arandojo, “were good value, speed, and a concurrent user license model.”

“The beauty of ProjectWise is that once it is established in a department, anyone in the group who wants to put their engineering content management system in order can be added to the system.”

Bentley Meets Hidrocantábrico Energía’s Exacting Project Requirements

Hidrocantábrico Energía issued a request for proposal to its current provider as well as Bentley Systems. “We explained to Bentley what our users required. ProjectWise met 90 percent of our users’ needs right out of the box and, with a little customization, it was easy to close the gap,” said Arandojo. “Using our previous provider’s new system would have required us to custom code 50 percent of the functionality.”

Hidrocantábrico Energía selected ProjectWise because it offered better value, could be implemented in four months compared to a year for the competing solutions and its license model is based on concurrent users, not named users.

“Another significant factor in its favor is that it can be accessed as necessary and with full security by our subcontractors,” said Arandojo. “The subcontractor can submit or view designs online through a web browser, and Hidrocantábrico Energía users can have access to their documentation through a web browser when away from the office. Comparing the two systems, the only strong point for the new AIM system was the fact that people in the company were already familiar with it. However, ProjectWise was far and away the right choice for our needs.”

Arandojo continued, “The beauty of ProjectWise is that once it is established in a department, anyone in the group who wants to put their engineering content management system in order can be added to the system. The functionality and control that this system delivers are perfect for our needs. And training is simple. Our users needed just two hours of training on ProjectWise to get up and running.

“Prior to our installation of ProjectWise, it took more than two minutes to retrieve a document from our content management system. Now, with ProjectWise, access is virtually immediate, and the system is just so much easier to use.”

In time, Hidrocantábrico Energía foresees that its new ProjectWise system might be used by other departments in the company, including power generation, cogeneration, and renewable energies.

Nombre	Edición	Título	Reserva Código	Fecha	Reserva	Ra
CIDSPA-880970613/1101H221	D	LISTA DE CABLES. TELEMANDO	SAN ESTEBAN-NUOVA INSTALACION SERVICIOS AUXILIARES 4...	30/11/2007 0:00:00	Nueva instalac...	
CIDSPA-880970613/1101H21a	D	LISTA DE CABLES. TELEMANDO	SAN ESTEBAN-NUOVA INSTALACION SERVICIOS AUXILIARES 4...	30/11/2007 0:00:00	Nueva instalac...	
CIDSPA-880970613/1101H231	B	LISTA DE CABLES. ARMARIOS 20 KV	SAN ESTEBAN-NUOVA INSTALACION SERVICIOS AUXILIARES 4...	30/11/2007 0:00:00	Nueva instalac...	
CIDSPA-880970613/1101H241	B	LISTA DE CABLES. CUADRO SERVICIO...	SAN ESTEBAN-NUOVA INSTALACION SERVICIOS AUXILIARES 4...	30/11/2007 0:00:00	Nueva instalac...	
CIDSPA-880970613/1101H251	B	LISTA DE CABLES. TELEMANDO DCD	SAN ESTEBAN-NUOVA INSTALACION SERVICIOS AUXILIARES 4...	30/11/2007 0:00:00	Nueva instalac...	
CIDSPA-881970700R102	D	DISPOSICION DE EQUIPOS. PLANTA S...	SAN ESTEBAN-NUOVA INSTALACION SERVICIOS AUXILIARES 4...	30/11/2007 11:23:00	NUOVA INSTALA...	
D1C131	C	SECCIONES DE ZANJA. TIPO "2T". DIS...	NORMALIZACION DE PLANOS ZANJA TIPO - INICIATIVA LEAN	05/03/2010 0:00:00	NORMALIZACIO...	MB
D1C132	C	SECCIONES DE ZANJA. TIPO "4T". DIS...	NORMALIZACION DE PLANOS ZANJA TIPO - INICIATIVA LEAN	05/03/2010 0:00:00	NORMALIZACIO...	MB
D1C133	C	SECCIONES DE ZANJA. TIPO "6T". DIS...	NORMALIZACION DE PLANOS ZANJA TIPO - INICIATIVA LEAN	05/03/2010 0:00:00	NORMALIZACIO...	MB
D1C141	C	SECCIONES DE ZANJA. TIPO "9T". DIS...	NORMALIZACION DE PLANOS ZANJA TIPO - INICIATIVA LEAN	05/03/2010 0:00:00	NORMALIZACIO...	MB
ERCOA-7290	A	ESQUEMA CONEXION ALARMAS. LJCOL...	VILLAVICIOSA-ACTUALIZACION ESQUEMAS CELDAS 20 KV	09/07/2008 7:01:00	ACTUALIZACION...	
ERCOA-7292	A	ESQUEMA CONEXION ALARMAS. LINEA...	VILLAVICIOSA-ACTUALIZACION ESQUEMAS CELDAS 20 KV	09/07/2008 7:01:00	ACTUALIZACION...	
ERCOA-7293	A	CLAVIAS DEL RACK. CELDA ACOPLAM...	VILLAVICIOSA-ACTUALIZACION ESQUEMAS CELDAS 20 KV	09/07/2008 7:01:00	ACTUALIZACION...	
G51E1H1	D	ARMARIO SERV. AUX. ESQUEMA DEST...	REEMSOR CABRUÑANA-SE ELIMINA ALIMENTACION 24 VCC	21/02/2007 0:00:00	Se elimina alimen...	
G51E1H2	C	ARMARIO SERV. AUX. ESQUEMA MAND...	REEMSOR CABRUÑANA-SE ELIMINA ALIMENTACION 24 VCC	21/02/2007 0:00:00	Se elimina alimen...	
G51E1H3	C	ARMARIO SERV. AUX. ESQUEMA CONT...	REEMSOR CABRUÑANA-SE ELIMINA ALIMENTACION 24 VCC	21/02/2007 0:00:00	Se elimina alimen...	
G51E1H4	C	ARMARIO SERV. AUX. ESQUEMA MAND...	REEMSOR CABRUÑANA-SE ELIMINA ALIMENTACION 24 VCC	21/02/2007 0:00:00	Se elimina alimen...	
G51E1H5	A	ESQUEMAS DESARROLLADOS. ESQUE...	REEMSOR CABRUÑANA-SE ELIMINA ALIMENTACION 24 VCC	21/02/2007 0:00:00	Se elimina alimen...	
G51E1H6	A	ESQUEMAS DESARROLLADOS. C. SERV...	REEMSOR CABRUÑANA-SE ELIMINA ALIMENTACION 24 VCC	21/02/2007 0:00:00	Se elimina alimen...	
G51E1H7	A	ESQUEMAS DESARROLLADOS. C. SERV...	REEMSOR CABRUÑANA-SE ELIMINA ALIMENTACION 24 VCC	21/02/2007 0:00:00	Se elimina alimen...	

Nombre de propiedad	Valor de propiedad	Nombre de propiedad	Valor de propiedad
Nombre	4T1096E1	Descripción	
Nombre de carpeta	PLANOS	Descripción de carpeta	
Entorno	ART-e	Almacenamiento	arte
Nombre de archivo	4T1096E1.DWG	Tamaño de archivo	418273
Flujo de trabajo		Estado	
Creador	admin	Creado	10/06/2009 22:57:05
Actualizador	Ivan	Actualizado	21/01/2010 16:10:58
Actualizador...	admin	Archivo actualizado	10/06/2009 22:57:05
Estado	Exportado	Notado	g84
Notado		Reservado	

Hidrocantábrico uses ProjectWise to control exchanges of documentation with sub-contractors