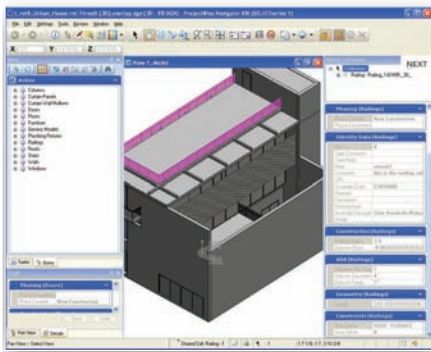
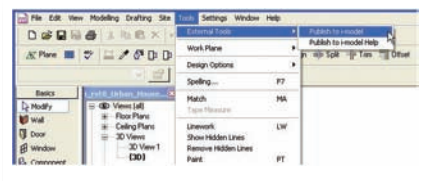


iWare Apps

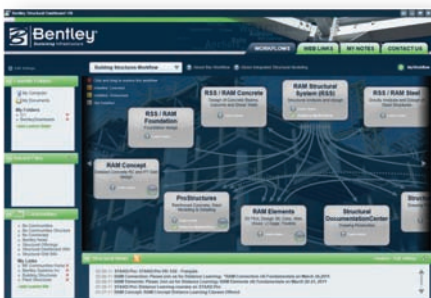
Bentley's iWare Apps move the interoperability dialogue up a notch by providing free, fast and easy tools to share information and models



i-model plug-in for Revit



Publish to i-model dialogue in Revit



Structural Dashboard

If there's one issue that's been writ large in Bentley's mindset over the last couple of years it's interoperability - the ability of project teams to share models and data from different applications. A major initiative in Bentley's interoperability strategy was last year's rollout of i-models, Bentley's containers for open structure information exchange, and the introduction shortly afterwards of the Integrated Structural Modelling (ISM) methodology that allowed structural engineers to share data across multiple vendors applications. The Process Plant market also saw the introduction of OpenPlant with its ISO 15926 standard that met the primary goals of the iRING community to share real-time plant life-cycle data.

This March Bentley provided a new set of utilities to further the interoperability process in construction, giving users a fast, easy access to i-models via free applications and plug-ins, called, as almost everything else seems to be these days, iWare Apps.

Although iWare Apps are freely and universally available, the current release is limited to Bentley applications, including RAM Structural and also Autodesk's Revit on the modelling side, but slightly wider to Windows users and the wide range of supporting applications that Microsoft provides. The first release of iWare Apps provides eight useful utilities, with a further four currently in development. Like their counterparts in the mobile

communications industry, they are not full-blown applications but smaller, self-contained pieces of software designed to perform singular functions.

IWARE APPS FOR ALL

The first batch on the market includes three Apps designed for use by all construction professionals:

Bentley View. With millions of users, Bentley View is the industry's most widely used free CAD viewer for interacting with DGNs, DWGs, DXFs, i-models and many other industry formats. In addition to AutoCAD and MicroStation designs, Bentley View supports over 50 other file formats, including raster image formats. Bentley View allows users to explore 2D and 3D models, to measure distances and areas accurately, and to print drawings to scale-all with full fidelity, without translations, on every desktop - and at no cost!

Structural Synchronizer. Structural Synchronizer V8i is the core component of an Integrated Structural Modeling workflow. It provides data synchronization, change management, revision history and model viewing, and integrates applications and data such as structural modeling, analysis and design, documentation and drafting, detailing and fabrication, and industry-neutral file formats

STRUCTURAL DASHBOARD

This allows users to manage building and plant workflows and information

exchange through a unified interface to launch all structural applications, joining structural blogs, wikis, and forums on Be Communities. It also allows the user to download product upgrades from Bentley's SELECTservices Center.

IWARE APPS FOR REVIT USERS

A further three modules are aimed specifically at Revit users:

i-model Plug-in for Revit. Revit users will be able to publish i-models from their application for infrastructure information exchange. The i-model plug-in for Revit allows users to save their Revit models in a way that lets users open them in Bentley MicroStation, ProjectWise Navigator, and many other Bentley building products, retaining the Revit properties information from the Revit model.

The plug-in is designed to help teams working in a mixed Bentley/Revit environment to be able to reference Revit models into a MicroStation-based design workflow for coordination purposes, interference detection, and similar tasks. The i-model plug-in for Revit works with the 2008, 2009, 2010, and 2011 versions of the Revit product range, including Architecture, MEP, and Structure, and also includes support for the 64-bit versions.

ISM Revit Plug-in. Another Revit tool that allows users to coordinate, change and synchronise structural data with Structural Synchroniser and is fully compatible with Revit 2009 and 21010 versions.

RAM Structural System - Revit Link.

This enables users to achieve direct interoperability between RAM Structural System and Revit Structure. RAM Revit Link enables users to analyse and design buildings within the RSS environment and subsequently use Revit Structure for multidisciplinary collaboration as well as documentation. It has bi-directional integrity and comes with suitable clash detection capabilities.

iWare Apps for Bentley users

Besides using Bentley View, Structural Synchronizer and Structural Dashboard, Bentley Users are provided with a couple of other useful tools using Microsoft Windows applications.

Bentley DGN IFilter. Demonstrating the use of Microsoft Windows applications within iWare Apps, the DGN IFilter allows users to find DGNs and i-models based on the textual information within them. The Bentley DGN IFilter allows the contents of DGNs and i-models to be indexed, making them searchable within Windows Search and Google Desktop. Whether the design files you need are located on your desktop, a networked server, or an intranet site, you can find them faster with Bentley DGN IFilter.

Bentley DGN Thumbnail Provider.

Users can embed thumbnails within DGNs so that they become viewable within applications like Windows Explorer. These last two Apps are available for use by Microsoft Windows users.

Further iWare Apps under development include an i-model plug-in for AutoCAD, OpenPlant Specification Generator, Bentley AutoPLANT Object Enabler and gINT AGS to Excel Converter (for geostructural users). To help users get the most out of iWare Apps there are links on Bentley's iWare Apps site (www.bentley.com/iWare) where they can download each iWare App - along with free training videos and documentation for most of the Apps. Bentley has also supplied links to other useful sites offering free interoperability software tools.

Keith Bentley, CTO of Bentley Systems, is a fervent advocate of interoperability - and also of the need to make it easier and less expensive for disparate teams using different applications to be able to work together. Announcing the introduction of iWare Apps, he said, "I remember when we led the charge to help our users get more value from their information models. To make those models more valuable and provide a greater return, we made Bentley View widely available at no cost.

Today there are millions of copies of Bentley View in use throughout the world. With the introduction of i-models last year, we created the foundation for a whole new level of interoperability. The iWare Apps site builds on that foundation and provides a framework to make AECO information models not only open, but available to everyone."

www.bentley.com/iWare