

# More Than 50 Finalists

## Be Inspired Symposium & Awards Roundup

*The 2009 Be Inspired: Infrastructure Best Practices Symposium and Awards focused on compelling best practices sessions presented by Bentley users, but a number of key Bentley acquisitions were announced.*

By Remco Takken



*Bentley's Jack Cook, solution executive water & wastewater, BE Inspired-winner Madhuri Mulay and Richard Zambuni, global marketing director – Geospatial.*

The 2009 Be Inspired: Infrastructure Best Practices Symposium and Awards, held October 12-14, in Charlotte, North Carolina, drew 350 attendees to hear more than fifty finalists present infrastructure projects that brought to life Bentley's The Year In Infrastructure 2009 year-book.

In an evening ceremony attended by the mayor of Charlotte, Bentley executives acknowledged seventeen extraordinary projects and the organisations that created them. Judged by independent panels of Be Inspired Awards jurors, consisting of Bentley users and industry experts, the winning projects were chosen from more than 250 nominations.

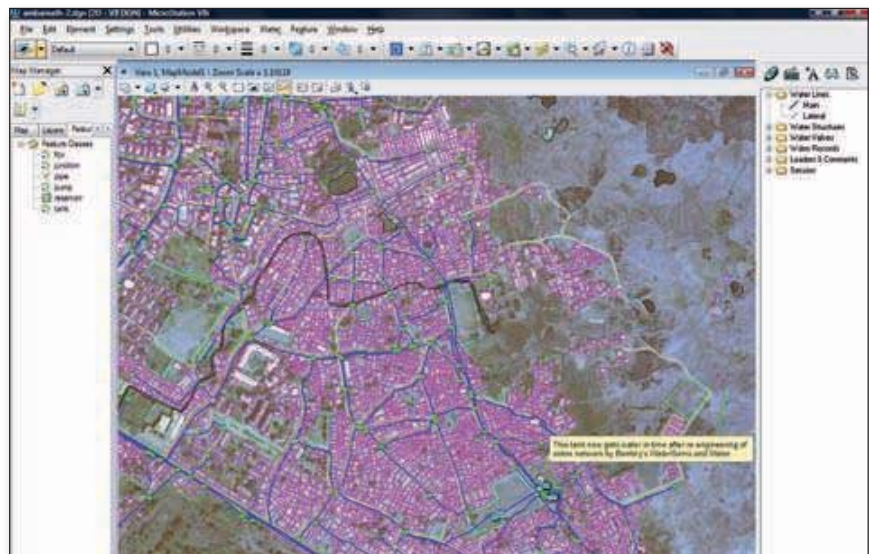
### Mitigating Water Supply Crisis in India

The Government of Maharashtra's Water Supply and Sanitation Department received a Be Inspired Award for becoming the first user in India to combine Bentley's modelling software with its water-specific GIS platform (Bentley

Water). To mitigate a water shortage crisis, the project team created scenarios to re-engineer the system, which allowed the team to take corrective measures. This resulted in the elimination of a weekly thirty-hour time lag before the water department refilled the network pipes once drinking water after supplies had been interrupted. The solution saved the water department from shipping in drinking water once a week at great cost to accommodate nearly 17 million people.

### Executive Roundtable

The Government of Maharashtra's Water Supply and Sanitation Department was again the focus of attention at the event's Executive Roundtable on Water and Wastewater networks the next day. The roundtable initiative made its successful debut connecting Bentley users and Bentley Software executives in small groups. Specialists from Maharashtra's Water Supply and Sanitation Department discussed in depth their workflows, technical challenges, as well as their request for new capabilities in Bentley's software products. The roundtables provided a forum for Bentley to listen to the needs of new users in developing economies. Direct contact such as this is a great way for companies to provide their users with additional support, while, at the same time, gaining interesting insight into the work of these GIS practitioners.



*To mitigate a water shortage crisis, the water department of Maharashtra Jeevan Pradhikaran (India) developed a hydraulic model that allowed engineers to locate the problem and design a solution.*



The 'Executive Roundtable' initiative made its successful debut in connecting Bentley users and developers in small groups. Specialists like Madhuri Mulay could lay bare even the deepest details of their work process, talk about technical hiccups and lay out future wishes.

### Communicating Through Visualization

U.K. organisation Mott McDonald's railway transport consultancy had two finalist presentations. Its winning 'Model Railway' project is an ongoing process of improvement and development, demonstrating that 3D design is relevant at all stages of the project lifecycle. Using Bentley Rail Track and MicroStation 3D modeling technology, Mott MacDonald has taken the railway modeling process from survey data collection through interdisciplinary design review.

The second presentation demonstrated how rail track and building design are immediately fit to visualize. "The global shortage of good technicians forces us to work more smartly," said Mott McDonald engineer Mark Eaden, "but this is only the start. We do have to work hard to comply to all those data standards." At the same time, Mott MacDonald is pushing the limits of what's achievable. One of the frontiers Mott McDonald currently faces: it is not yet possible to move virtual persons through its beautiful station designs. Mott McDonald also discussed its transition from MXRail software to Bentley Rail Track. Before transitioning, Mott MacDonald identified two pilot projects for trial implementation. The first was an ongoing project moving from outline design using MXRAIL to detailed design using Bentley Rail Track. The transition improved the interface between design and drawing tools, enabling designers to react to project change more efficiently.

### Wimbledon

One of the many intriguing presentations came from the award-winning British firm Edge Structures. Its concept to redevelop the world-famous Wimbledon Centre Court included the design of a retractable roof. This was only one aspect of the design challenges. The project scope also included redeveloping the east stand of Centre Court, extending the terrace to accommodate an additional six rows of seating.

Its first prototype of the new roof was remarkably well received. This was hilariously explained by John Westmuckett of Westmuckett Hawkes. "Of course, the design of the retractable roof is quite difficult to grasp. That's why we put a lot of money in creating a quick little model to demonstrate this to people: a couple of coat hangers and a bit of jay cloth...."

It wasn't the first time Wimbledon underwent a face-lift on such a large scale. The contemporary designers saw themselves confronted with a

# Systemübergreifendes Datenmanagement und Datenqualität in Geoinformationssystemen (GIS)

Durchgängige Integration von Geodaten und GIS-Funktionalitäten in IT-gestützten, unternehmensweiten Geschäftsprozessen; Verbesserung der Datenqualität und Datenintegration, Kopplung der Systeme sowie mobiler Einsatz von GIS

Hilton  Cologne

Hilton Köln

09. und 10. Februar 2010

Profitieren Sie u.a. von folgenden Themenschwerpunkten:

- Unternehmensweite Integration des GIS und Optimierung der Geschäftsprozesse
- Harmonisierung der Daten und der Weg zu qualitätsgesicherten Geodaten
- Datenmanagement und Datenerfassung – Effizienzsteigerung durch qualitätsgesicherte GIS-Daten
- Systemübergreifender Datenfluss: Intelligente Verknüpfung von GIS mit ERP-, CRM- und CAD-Systemen
- Schaffung systemübergreifender Transparenz und durchgehend einheitlicher und widerspruchsfreier Geodaten mit komplikationsfreiem Abruf in Echtzeit
- Darstellung aktueller Technologien und Trends zu mobilen Anwendungen

Referieren werden u.a.:

#### Richard Schwarz

Strategischer Planer für das österreichische Hochdruckgasnetz, Projektleiter NEMESYS

**AGGM Austrian Gas Grid Management AG**

#### Helmut Wittmann

Leiter der Abteilung Netzzugang und Kapazitäten

**AGGM Austrian Gas Grid Management AG**

#### Guenther Okon

Kriminalhauptkommissar und VerfahrensverantwortlicDirk Jedrau GIS-Projektleiter

**Gelsenwasser AG**

#### Andreas Siebert

Leiter Geospatial Solutions

**Münchener Rückversicherungs-Gesellschaft AG**

#### Manfred Farthofer

Anforderungsmanagement IT-Systeme

**Salzburg AG**

#### Wilfried Schreiber

Leiter Koordinierung/IuK – Technologie Stadtoberraurat, Stadt Karlsruhe – Tiefbauamther für GIS

**Bayerisches Landeskriminalamt**

#### Uwe Lippmann

Leiter Mediaplanung Vertriebsdirektion Einzelhandel/Konsumgüter

**Deutsche Post AG**

#### Artur Rysch

Projektleiter GIS

**Dortmunder Energie- und Wasserversorgung GmbH**

Media Partner:

**GEOInformatics**  
Magazine for Surveying, Mapping & GIS Professionals

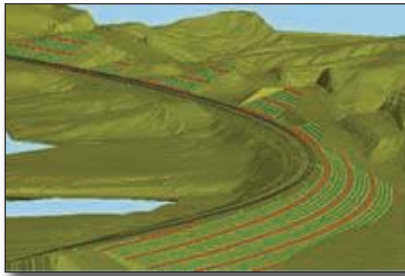
[www.geoinformatics.com](http://www.geoinformatics.com)

Für weitere Informationen wenden Sie sich bitte an:

**Madeleine Tischer**, E-mail: [anzeigen@marcusevansde.com](mailto:anzeigen@marcusevansde.com)

Tel.: +49 30 890 61 240, Fax: +49 30 890 61 434

[www.marcusevansde.com/GIS](http://www.marcusevansde.com/GIS)



One of the presentations by Mott McDonald dealt with the transition from MX Rail-software to Bentley Rail Track.

colourful array of additions to the original design. Step by step, Wimbledon had changed, and all those post-1923 extensions had to be treated with care. Edge Structures was required to maintain the existing character of the building.

### Acquisitions and business news

During the event, Bentley announced some recent acquisitions and strategic collaborations.

#### gSQ Corporation and PlantWave

Bentley recently acquired gSQ Corporation, a provider of integration services and plant design software based in South Korea. With gSQ's PlantWave, users can streamline the production and delivery of 2D orthographic general arrangement (GA) drawings for process, power, offshore, and marine industry applications from 3D design models created using AutoPLANT, PlantSpace, PDS, and PDMS.

#### KSJ Beijing and BridgeMaster

During the BE Inspired event, Bentley Systems announced the acquisition of Beijing KSJ

Software Technology Co. Ltd., which includes the BridgeMaster product line. BridgeMaster is AutoCAD-based software, featuring parametric drawing creation. BridgeMaster is used in China for the fast and efficient automated production of bridge construction drawings. Bentley's development plans for BridgeMaster include its integration with Bentley's ProjectWise. Longer-range plans will enable Bentley to deliver the first Bridge Information Modeling (BIM) solution tailored to the needs of the hundreds of design institutes in China that already employ BridgeMaster.

#### gINT Software

Headquartered in Santa Rosa, California, gINT Software produces geotechnical and geo-environmental products. A quick glance at gINT Enterprise, the company's newest product, explains why Bentley acquired this company. gINT Enterprise maximizes the value of centrally managed subsurface data through multiproject reporting and dramatically extended querying power. Offering a solution for transportation operations, engineering consultancies, plants, campuses, and state and federal agencies with vast quantities of geotechnical data, gINT Enterprise facilitates the reuse of subsurface mapping information.

#### Pointools and Vortex Engine

Bentley recently entered into a technology agreement with Pointools, a vendor of software that exploits point clouds captured by 3D laser scanning of infrastructure assets, including aerial LiDAR surveys. Bentley has licensed Pointools' fast Vortex API engine (and its ongoing upgrades) for incorporation in MicroStation and all other products that leverage Bentley's

platform technology. The Pointools engine is able to handle large point cloud datasets, comprising billions (not millions) of points, and from virtually every scanning source.

#### Bentley i-models

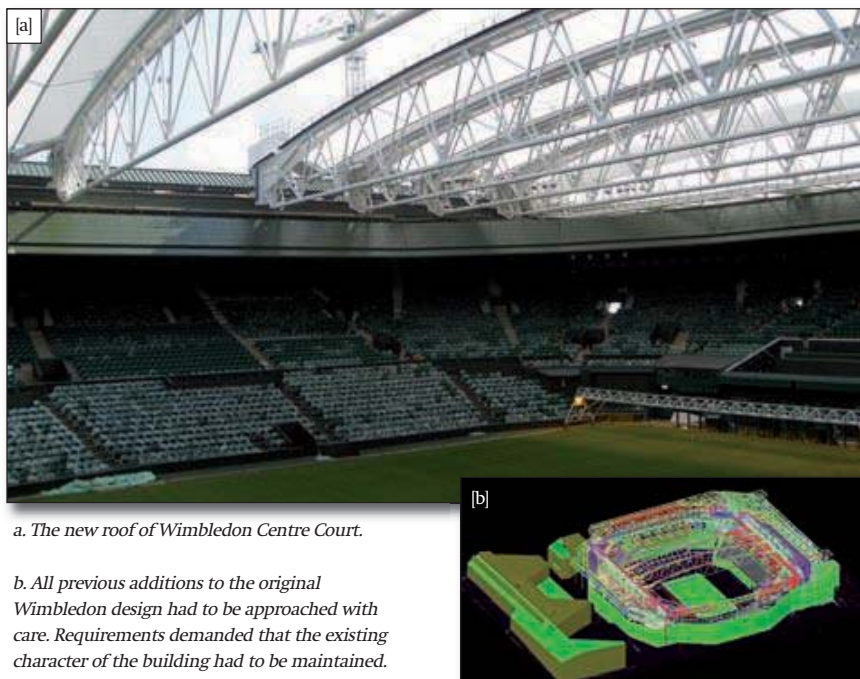
ProjectWise Navigator V8i (SelectSeries 1) became available in October. The new version can be used by infrastructure teams to interactively view, analyze, and augment project information. To make this process dynamic, so feedback can flow in both directions for any participant to add value, Bentley also introduced i-models. An i-model is a container for open infrastructure information exchange. A key characteristic of i-models is "provenance": knowledge of its origin and evolution – its change management history.

While ProjectWise collaboration servers are not required to work with i-models when using ProjectWise Navigator V8i (SELECTseries 1), there are advantages to be gained. For example, in a dynamic collaboration environment powered by ProjectWise servers, notifications can be issued so that subscribing team members are always kept aware of subsequent changes to their work.

### A success in Spite of The Financial Crisis

The 2009 Be Inspired: Infrastructure Best Practices Symposium and Awards, with its many presentations and news flashes, gave a great picture of the activities of Bentley's users in different industries. The invitation-only event drew 350 attendees, quite remarkable given the economy and the number of organisations streamlining their travel budgets. In spite of the financial crisis, much great work still gets done on infrastructure projects.

Remco Takken [rtakken@geoinformatics.com](mailto:rtakken@geoinformatics.com) is a contributing editor of *GeoInformatics*. More information on all BE Inspired Award winners and finalists can be found at [www.bentley.com/projectsearch](http://www.bentley.com/projectsearch). For additional information about BridgeMaster, visit [www.ksj.com.cn](http://www.ksj.com.cn). For additional information about PlantWAVE, visit [www.bentley.com/9SQ](http://www.bentley.com/9SQ). For more information about the Pointools technology, visit [www.pointools.co.uk](http://www.pointools.co.uk). For additional information about dynamic collaboration, i-models, and ProjectWise Navigator V8i (SELECTseries 1), visit [www.bentley.com/ProjectWise](http://www.bentley.com/ProjectWise). For additional information about the gINT product line, visit [www.gintsoftware.com](http://www.gintsoftware.com).



a. The new roof of Wimbledon Centre Court.

b. All previous additions to the original Wimbledon design had to be approached with care. Requirements demanded that the existing character of the building had to be maintained.