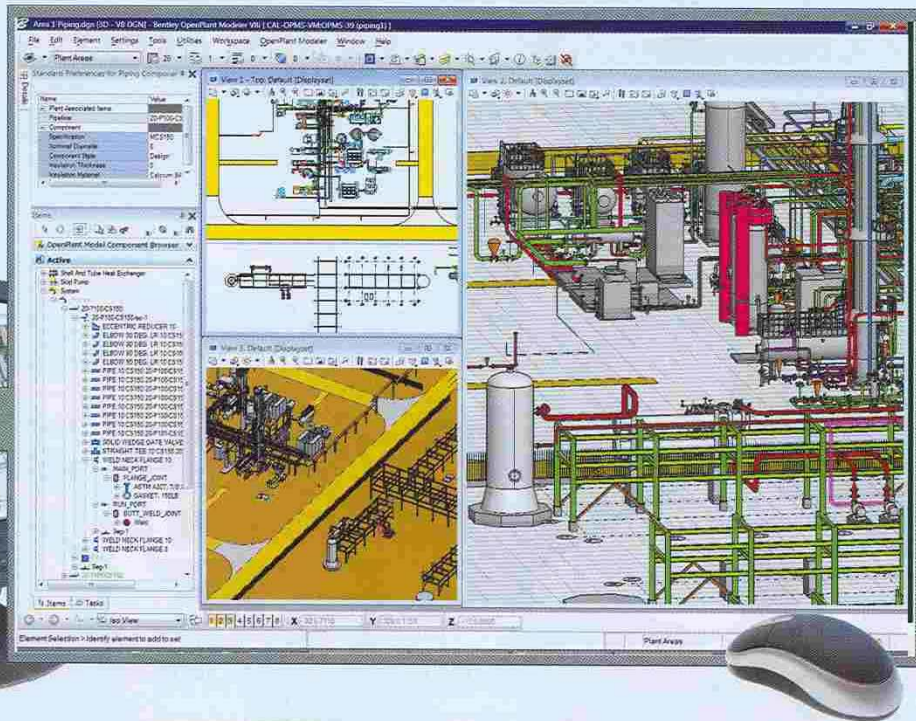


Been an 'Open' and shut case

Bentley's new products are providing breakthrough value to their customers, redefining comprehensiveness in plant creation software.



"The plan provides users of PDS software with an economical migration path that protects their knowledge investments and enables them to reuse their catalogues.

ANNE-MARIE WALTERS,
Global Marketing Director,
Bentley

BENTLEY SYSTEMS, Incorporated, the leading company dedicated to providing comprehensive software solutions for infrastructure development, has announced the immediate availability of three new products in Bentley's OpenPlant software for plant creation based on an open data model. The new plant offerings from Bentley are the first commercially available products to share and meet the primary goal of the iRING user community - that is, to enable real-time, seamless sharing and interoperability of data and information across different organizations and systems using an internationally recognized standard.

iRING implementations (ISO 15926 Real-Time Interoperable Network Grids) address the challenging workflow requirements of today's globally distributed and sourced plant projects. Among the firms actively involved in the iRING community are Bayer, Bechtel, CH2M HILL, Consolidated Contractors Company, Dow, DuPont, Emerson, Fluor, Hatch, and Zachry.

The new plant applications from Bentley

enhance interoperability across data formats, workflows, and plant design systems, and add to the comprehensiveness of Bentley OpenPlant - extending its ability to integrate across multiple infrastructure disciplines while improving project team collaboration and providing breakthrough value.

The three new Bentley OpenPlant products that have been released include:

Bentley OpenPlant Modeler V8i - This is the first 3D plant modelling software to natively use the ISO 15926 data model as specified by the iRING user community. OpenPlant Modeler V8i incorporates the ongoing and ever-advancing capabilities of MicroStation V8i, the market-leading platform for plant creation and every infrastructure discipline. OpenPlant Modeler V8i is the only plant modelling software to natively support workflows that combine commonly used software standards including DGN, RealDWG, point clouds, and PDF.

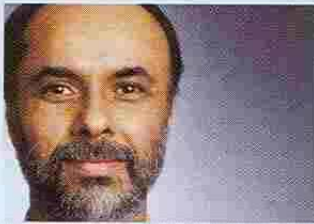
Bentley OpenPlant ModelServer V8i - This is the first plant design server soft-

▶ Bentley adds three product firsts to OpenPlant, redefining 'comprehensiveness' in plant creation software.

▶ Bentley OpenPlant Modeler V8i, Bentley OpenPlant ModelServer V8i, and Bentley OpenPlant Isometrics Manager V8i extend breadth and depth of application offerings; achieve interoperability requirements of iRING user community, and provide breakthrough value.

ware to effectively and productively manage both files and components. This is ideal for globally sourced projects that are necessarily loosely 'coupled'. File management, enabled by Bentley's ProjectWise collaboration services, is essential for the efficient exchange of deliverables and work packages, while at the same time, component management supports a higher level of abstraction, productivity, and quality of work. Projects using Bentley OpenPlant ModelServer V8i can benefit from yet another first: interoperable workflows across multiple design environments, including Intergraph's PDS as well as Bentley's AutoPLANT and PlantSpace.

Bentley OpenPlant Isometrics Manager V8i – This is the first isometrics generation software to extract and incorporate complete intelligence from 3D plant models, automatically and in real time. Uniquely, such 'on demand' intelligent



The new OpenPlant applications enable users to achieve that level of real-time interoperability by using software that's now commercially available.

BHUPINDER SINGH,
Sr. Vice President,
Bentley Software

isometric views remain relevant for owner-operators throughout the plant lifecycle – beyond procurement, fabrication, and construction to 'as built' and 'as safely operated' maintenance and compliance.

Commenting on the new offerings, Bhupinder Singh, senior vice president, Bentley Software, said, "Bentley announced its OpenPlant strategy for enhanced interoperability in 2008. In 2009, the iRING user community demonstrated, using prototype software, the benefits of interoperability achievable with a full technical implementation of ISO 15926. Leveraging our MicroStation and ProjectWise platforms, the new OpenPlant applications enable users to achieve that level of real-time

interoperability by using software that's now commercially available – dramatically increasing the quality, cost-effectiveness, and freedom with which plant projects can be performed."

Added Anne-Marie Walters, Bentley global marketing director, "Our new additions to OpenPlant are key facets of our 'Smart Plan' for PDS users that we introduced in March this year. The plan provides users of PDS software around the world with an economical migration path that protects their knowledge investments and enables them to reuse their catalogues, specifications, and PDS databases."