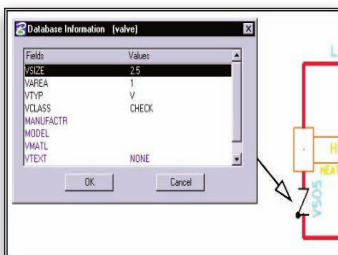




## PlantSpace® P&ID

Process and Instrumentation Diagrams Deployable for Design and Operations

PlantSpace P&ID is a powerful application for creating process and instrumentation diagrams (P&IDs), combining high-productivity drafting with intelligent review and reporting capabilities. The software provides substantial savings in time and money spent on schematic drawing and report generation.



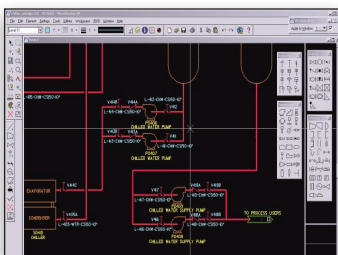
Create intelligent P&IDs containing component information

### Compatibility

PlantSpace P&ID offers broad compatibility with other software, making it easy to meet enterprise or client standards. PlantSpace P&ID is fully compatible with PlantSpace Design Series 3D modeling software. It also integrates easily with standard maintenance and process control systems as well as with most commercial databases and spreadsheets for Microsoft Windows. Additionally, it supports easy conversion of existing P&IDs in many formats to intelligent PlantSpace P&IDs.

### Flexibility in Controlling Project Standards

PlantSpace P&ID offers standards control at the component level. The software provides a standard P&ID symbol library and a full complement of capabilities for creating your own symbols and libraries. In addition, you can import AutoCAD drawings in the P&ID.



Standard P&ID symbol library included and full capabilities for creating your own symbols and libraries

### Rapid, Intelligent Drafting

Using AccuDraw® technology, PlantSpace P&ID greatly enhances drafting productivity. You can rapidly place P&ID symbols without setting up file specifications or database parameters. The software overcomes many of the limitations of traditional P&ID creation, allowing you to draw intelligent P&IDs with minimal input. PlantSpace P&ID then creates an intelligent object model from the information in your drawing.

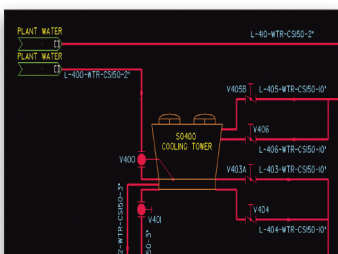
### Component Query and Review

PlantSpace P&ID offers flexible query and review capabilities, letting you access all pertinent component information by simply selecting the component in the P&ID. The software displays a list of the piping line, valves, instruments, instrument loops and equipment in the P&ID, from which you can select and highlight components or component groups in the drawings. As you scroll through the list, PlantSpace P&ID automatically zooms in on each item for clear identification.

### Export Report Data

You can generate report data from the information in the object model and export it for reporting purposes to an external, ODBC-compliant database. The exported files can then be used in a report writer application such as MS-Access, or you can use the exported data to update an external database. You can also edit the external database and import that data to update the drawing.

Additionally, it supports easy conversion of existing P&IDs in many formats to intelligent PlantSpace P&IDs.



Flexible query and review capabilities - access all pertinent component information by simply selecting the component in the P&ID

### Object-based Schematics

PlantSpace P&ID drawings derive information from the data that you place in the drawing. Unique object technology provides intelligent checking for data validity and consistent engineering design practices. The software automatically reports conflicting flow, unconnected lines, and other inconsistencies. PlantSpace P&ID also checks for valid data input and inconsistencies between different P&ID sheets. You can define checking methods according to your company or project specifications.

## System Requirements

### Processor:

Intel Pentium-based PC

### Operating System:

Microsoft Windows 2000 (SP3 or later) or Microsoft Windows XP Professional (SP2 or later)

### Memory:

256 MB minimum, 512 MB recommended.

### Hard Disk:

75 MB minimum

### Video:

DirectX 9.0 support, 128 MB video RAM minimum

### MicroStation:

Version 08.09.04.88

### MicroStation Schematics:

Version 08.09.04.38

### Databases:

Supports Oracle (to 10g), Microsoft SQL Server, MSDE, and Microsoft Access databases

### ODBC Drivers:

For Oracle 9i or Oracle 8i projects, use Oracle ODBC driver v9.2.0.2.0. For Oracle 8i and Microsoft SQL Server 2000 projects, use Microsoft Data Access Components (MDAC) v2.7

Find out about Bentley at: [www.bentley.com](http://www.bentley.com)

### Contact Bentley

1-800-BENTLEY (1-800-236-8539)  
Outside the US +1 610-458-5000

### Global Office Listings

[www.bentley.com/contact](http://www.bentley.com/contact)

## PlantSpace P&ID At-A-Glance

### Intelligent P&IDs

- Ability to create intelligent P&IDs from non-intelligent P&IDs
- Verification and conformance utilities maintain the integrity of graphical attributes and component tags between P&IDs and the stored settings for components
- During generation of the object model, software identifies problems such as a missing pipe size, conflicting flow direction, or objects missing the From or To fields
- Dynamically display lists of piping lines, valves, instruments, or equipment in the P&ID
- Provides added intelligence by automatic linkages to external sources of information, such as line lists, equipment databases, procurement, scheduling, construction, maintenance or real-time monitoring of process pressure and temperature

- Display component information by selecting a component
- Update tags throughout your P&ID in one step

### Component Review and Query

- Flexible query and review capabilities
- Listing of piping lines, valves, instruments, instrument loops and equipment

### Symbol Library

- Standard P&ID symbol library and a full complement of capabilities for creating symbols and libraries
- Similar "feel" to MicroStation® placement and drafting for ease of drawing creation

### Reports

- Creation of a wide array of reports, including line lists, equipment lists, valve lists and more that can be both DGN based and ODBC compliant

- Produce customized report formats for the report tool of your choice: Access, dBase, FoxPro, Oracle, and so forth

### Standards

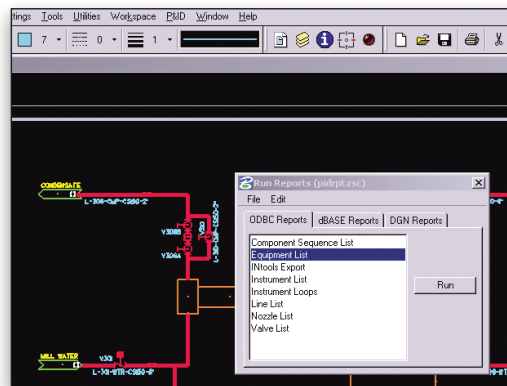
- Available with ANSI standards and PIP (Process and Industry Practices)

### Compatibility

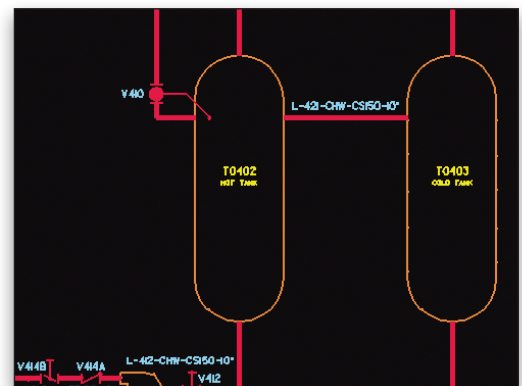
- Fully compatible with PlantSpace Design Series 3D modeling software
- Integrates easily with standard maintenance and process control systems as well as with most commercial databases and spreadsheets

### User Interface

- Minimal training is required over and above MicroStation training



Create an array of reports, including line lists, equipment lists, valve lists, and more



Import non-intelligent P&IDs in MicroStation or AutoCAD file format to create intelligent P&IDs