

Heron Tower



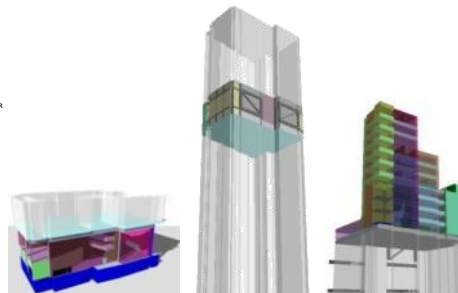
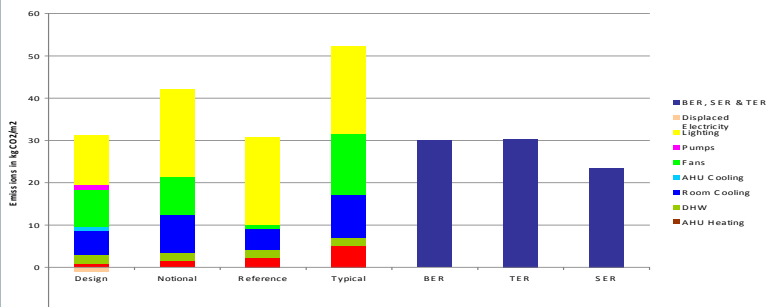
Bentley Tas enabled:

- The performance of early stage façade alternatives were quickly evaluated
- External shading options were validated and the building was oriented to minimize solar gain
- Green heating & cooling strategies were assessed
- Natural Ventilation
- Chilled Beams
- Thermal Wheels
- Evaluation of the solar wall

Results:

- Lower energy consumption
- Success with cutting edge design elements

Annual CO2 Emissions for Heron Tower



Project Facts:

- Project Location: London, UK
- 807' (242m), containing 440k sf of office, on 46 floors—the tallest in London.
- Consultant: Forman Roberts
- From the beginning efficiency and sustainability was a project requirement.
- Construction expected completed 2011

Key Design Elements:

- South Facing Offset Core
- Double Skin Façade with integral automatic blinds
- Natural Ventilation
- Low E Lighting Strategy
- Thermal Wheels to Reduce System Size
- Advanced BMS linked to controls and monitors
- 2nd Largest Building Mounted PV "wall" in the UK