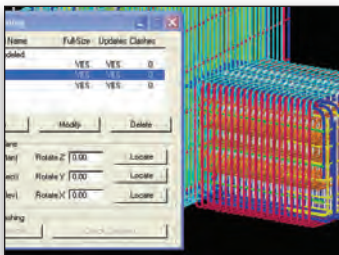


Bentley® Rebar

Reinforced Concrete Detailing and Scheduling

Bentley Rebar is 2D/3D software for reinforced concrete detailing and scheduling. It makes full use of the interactive, easy-to-use MicroStation® interface to deliver a powerful concrete detailing system. The software is used for a range of structures: buildings, domes, towers, bridges, dams, industrial structures, and marine structures. Bentley Rebar ensures accuracy of design, quantities, and plans – regardless of the complexity.



3D model investigation reduces the likelihood of conflicts during construction.

Drafting Flexibility

Powerful routines enable users to quickly create 2D reinforcement layouts. The detailing process provides for straight reinforcement, closed ties, circular, spiral, and radial reinforcement. There are no restrictions on the shape of the concrete arrangement. Plan, section, and elevation details can be regular or irregular, and can include complex and varying concrete shapes. Reinforcement is instantly updated by the software whenever changes to concrete arrangements are required.

Dynamic Bar Labeling

The labeling options eliminate errors traditionally associated with rebar detailing. The software automatically maintains bar marks, bar quantities, spacings, and diameters, saving many hours during detailing and checking. A list of user-defined labeling formats eliminates the need to enter text manually.

Automatic Scheduling and Charting

As the user creates reinforcement details, Bentley Rebar automatically assigns bar marks, determines bar shapes, and calculates bar lengths and dimensions. When concrete arrangements are changed, the software instantly updates schedules and bar charts with accurate quantities and bar mass summaries.

Dynamic Dimensioning and Parametric Detailing

Dynamic dimensions allow users to drive the size and shape of concrete details and manipulate them with a dynamic dimensioning tool. Bentley Rebar automatically adjusts all related concrete and reinforcement details when sizes are changed. Bentley Rebar allows users to reuse concrete details and quickly change dimensions from one detail to the next. Dynamic dimensions can also be linked via equations for intelligent resizing of concrete arrangements.

User-Definable Bar Codes

Reinforcement is drawn to the user's preferred design code. Bentley Rebar supports the majority of international design codes. Lap lengths, bar diameters, steel grades and designations, and hook and cog sizes, are preset to code. Users can modify this data at any time to suit special design conditions, or input custom data to comply with lesser-known codes.

Bar Shape Library

As each reinforcing bar is detailed, Bentley Rebar scans a Bar Shape Library of more than 1,000 shapes to find the matching shape. These shapes cover all major international codes and a wide array of nonstandard shapes. Required shapes can be activated and deactivated at any time during a project.

3D Modeling

Bentley Rebar automatically creates and maintains 3D models of reinforcement as 2D views of a structure are established. The MicroStation visualization tools facilitate creation of rendered perspective views, fly-through movies, and panoramas – enabling use of 3D models for investigation of physical conflicts.

Powerful Bar Editing

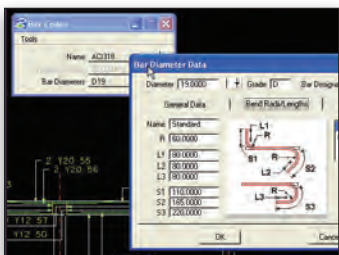
A suite of specialized reinforcement editing routines helps the user manage the detailing and scheduling process. Options are included to automatically draw bars in full size, to instantaneously rescale details, or to insert openings into a group of bar ranges.

Rebar Object Library

Objects are useful for automating the detailing of stairways, beams, columns, slabs, walls, piers and footings, retaining walls, and bridges. User-definable objects make it easy to create new objects from scratch or via quick modifications to existing objects. Objects are scheduled automatically as dynamic dimensions are resized.



Bar charts are instantaneously updated as details are created/changed.



Reinforcing in plan and section is automatically drawn to code.

System Requirements

Processor:

Intel Pentium or AMD AthlonT

Operating System:

Windows Vista, XP, and 2000

RAM:

256MB minimum, 512MB recommended

Hard Disk:

900MB free disk space (includes the 400MB install footprint for a complete installation)

Display:

Graphics Card supported by DirectX 9.0

Find out about Bentley at: www.bentley.com

Contact Bentley

1-800-BENTLEY (1-800-236-8539)
Outside the US +1 610-458-5000

Global Office Listings

www.bentley.com/contact

Bentley Rebar At-A-Glance

Types of Detailing Routines

- Straight and bent multi-legged bars, including ties
- Radiused and circular ties
- Parallel and radial bar ranges
- Flood-fill of bar ranges
- Dynamic bar labeling
- Automatic 3D modeling
- User-defined object library for standard details

Bar Editing Features

- Dynamic dimensioning
- Dynamic reinforcement equations
- Dynamic reinforcement prompts
- Full-size detailing
- Automatic rescaling
- Bar member/layer adjustments

Bar Code Specifications (bar diameter data)

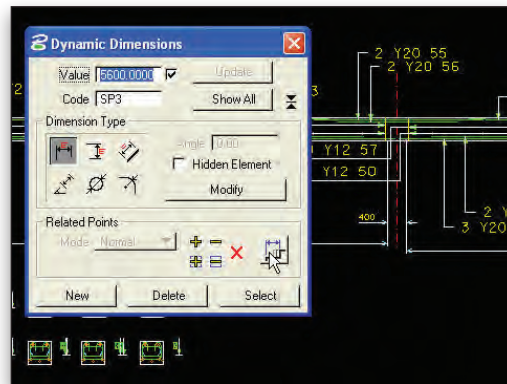
- ACI-318 (USA)
- BS8666:2000 (United Kingdom / Singapore / Hong Kong / South Africa)
- AS3600 (Australia)
- SKBI.89 (Indonesia)
- NZS3101 (New Zealand)
- Swedish Code
- User-definable bar code data
- Supported units: English, metric meters, centimeters, and millimeters

Scheduling Features

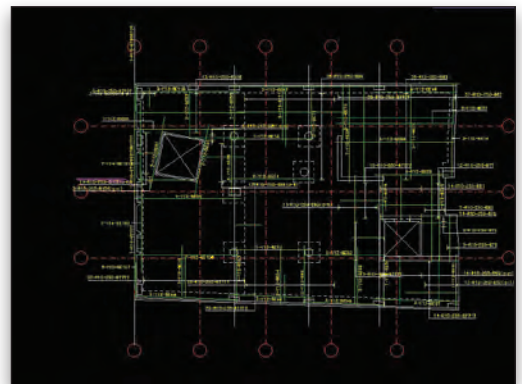
- Automatic shape detection, bar mark numbering, and schedule lengths
- Bar mark numbering methods – per drawing, member, layer, diameter, shape, or any combination
- Bar revisions and bar auditing
- Calculation of total bar mass summaries
- Import/export of bar charts from multiple DGN files
- Bar shape standards include: UK, Australia, France, South Africa, Sweden, USA, and numerous US and Canadian state/province transportation agencies
- User-definable bar shape standards

Bar Charting

- User-definable bar chart templates
- Multi-page formatting
- Inclusion of bar shape diagrams and dimensions
- User-defined headers and footers
- Bar chart export to ASCII, CSV/Excel, and manufacturing formats.



Dynamic dimensioning makes quick work of resizing details.



The software updates rebar details as you change concrete arrangements.