



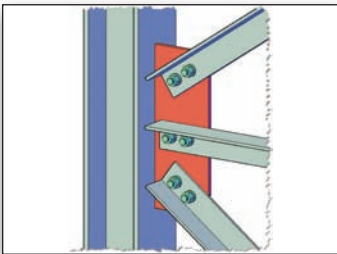
Bentley® ProSteel™ V8i

Structural Steel Detailing and Fabrication

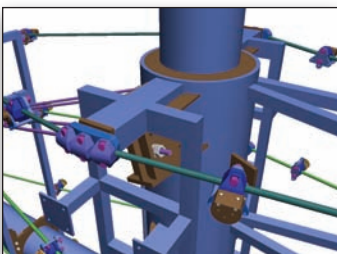
Bentley ProSteel V8i is an innovative 3D modeling environment for structural steel and metal work supporting your construction and planning tasks. Working on both MicroStation® V8i and AutoCAD platforms, you get an intuitive and integrated multi-material modeler perfectly suited to layout complex structures, produce shop drawings, assemble all your connections and manage your bill of materials.



Performs generation of specialized assemblies like stairs, handrails, trusses, bracings, circular stairs and joists



Includes standard connections (such as gusset plates) and non-standard connections



ProSteel V8i non-standard connection

Internationally Recognized

From initial planning and design to assembly, ProSteel V8i is a comprehensive software built by engineers experienced with steel design. Our many years of experience in the field of AutoCAD development and the close contact with our users has made ProSteel V8i an internationally recognized and important application for 3D structural steel and metal work.

Tools for 3D design and 2D documentation

ProSteel V8i provides an array of easy-to-master tools to create and modify structural steel objects. It includes a number of routines to automatically complete tasks – such as the creation of standard connections, shop and overview drawings, parts lists, and NC data – that would normally consume a great deal of the designer's time. Through the ProSteel V8i Revision Manager you can track and manage all modifications on objects and documents.

At the same time, the interoperability of ProSteel V8i allows it to integrate seamlessly with other facets of the engineering design chain including structural analysis and design (such as STAAD® and RAM™) and plant design (AutoPLANT® V8i). This helps AEC firms streamline their workflows, enhance collaboration, and maximize productivity, leading to a significant return on their investment in this innovative software.

Shapes and Preference Series

Create your own libraries of nearly all the commonly available International Shape databases. All Shape data is stored in easy to maintain databases. Quickly create a custom Shape database at any time and have full control over which shape databases you wish to use.

Automatic Connections

Automatic connections are features are key when using a modern 3D CAD program such as ProSteel V8i, producing significant savings in modeling time taken. Automatic connections are at your fingertips, allowing you to efficiently adjust shapes sizes and types, connection end conditions and more. Any feature or value of this connection can then be modified at a later date, by simply selecting one of the connection shapes and then clicking the right mouse button. Preset values of frequently used connections are stored in your Template Manager and can be easily retrieved and used again at any time.

Organized Standards

A substantial block management system allows you to store and process hundreds of blocks, to then insert them in your drawings. You are able to define different insertion points and alignments for each block. During insertion, they cycle through each point, one after another by using the mouse. A structured display of the blocks is possible if you assign user-defined data fields for each block. A logical search of blocks is also possible via the use of filters.

Easy Input Concept with Open Database

The structure of the interface makes ProSteel V8i the most user-friendly 3D steel construction application available. All commands such as plate connections, ribs, web angles, notches, borings function according to the same principle.

ProSteel V8i automatically shortens or lengthens the corresponding shapes, generates the desired joint, and screws all components together. Any necessary changes are already visible during the definition phase. All desired fabrication documents can be easily customized through integrated tools like a powerful form generator for a Bill of Materials or a Detail-Style Wizard for any kind of 2D drawing.

System Requirements

Processor:

Intel Pentium IV-based PC/workstation

Operating System:

Microsoft Windows XP, Windows Vista, Windows 7 and Windows 7x64 support

Memory: 1GB RAM (Windows XP SP2), 2 GB RAM (Windows Vista, Windows 64-bit), 4GB RAM (Windows 7 and Windows 7x64 support)

Hard Disk:

2GB minimum free disk space

Input Device: Mouse

Video Card: 512MB Video Card

Find out about Bentley at: www.bentley.com

Contact Bentley

1-800-BENTLEY (1-800-236-8539)
Outside the US +1 610-458-5000

Global Office Listings

www.bentley.com/contact

ProSteel V8i At-A-Glance

Design

- ProSteel V8i has more than 300 national and international shape tables with more than 20,000 shapes
- Standard Connections are included and easily modified. Some of them include:
 - End plate
 - Base plate
 - Web angle
 - Shear plate
 - Splice joint
 - Haunch
 - Stiffener
 - Purlin connection
 - Drill holes
 - Bolt
 - Notch
 - Polycut
 - Diagonal cut

Intelligent Structural Objects for Quick Detailing

- Including:
 - Staircase towers
 - Handrails
 - Circular staircaise
 - Ladders
 - Bracing, portal frames
 - Wall claddings
 - Purlin systems
 - Truss/Lattice girders
 - Platforms round and rectangular
 - Walkways

Multi Faceted External Data Exchange

- STAAD
- RAM
- SDNF 2/SDNF 3
- CIS/2 (CIMSTEEL)
- SCIA ESA-PT
- Dlubal RSTAB
- KISS
- PXF
- PS3 (ProSteel 3D)
- DSTV-NC
- DSTV-PPS
- Product interface
- Steel (DSTV)
- AutoPIPE® V8i

Automatic Drawing Creation and Output

- Workshop drawings views, erection drawings, parts lists or NC-data can be created in a short amount of time
- Interfaces to ERP-Systems, the machine control and workshop preparation can be optimized
- Output in many File Formats such as PDF, RTF, HTML etc.

International Standards and Databases

Due to its global distribution, ProSteel supports different languages and includes more than 300 databases and standards from all over the world

Revision Management

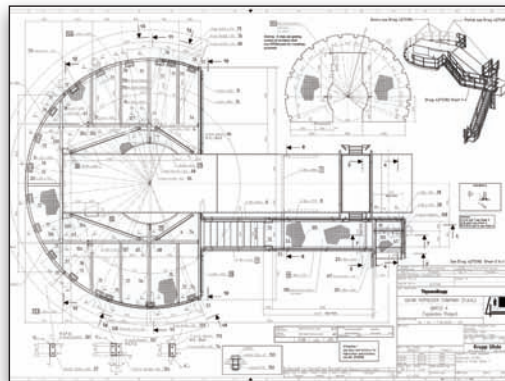
- The use of special technologies makes it possible to consider 3D bodies from other applications (ACIS volume bodies), such as Mechanical-Desktop, within ProSteel V8i. Moreover, it is also possible to convert any element of ProSteel V8i to ACIS bodies

Teamwork without Limits

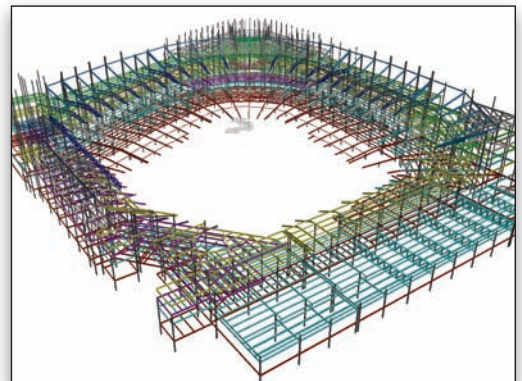
- Several people working together on one project is a task specially supported by ProSteel V8i. It is possible, for example, to position components as well as generate parts lists via several drawings

Programming

- Individual, arbitrarily complex connections - or whole constructions - can be realized by the COM interface easily
- Specific customer's requests can be provided quickly



ProSteel V8i 2D Example



ProSteel V8i 3D Stadium Model