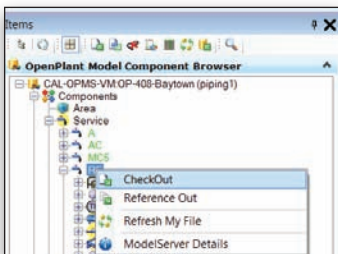




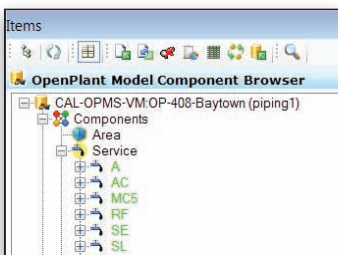
Bentley® OpenPlant ModelServer V8i

Effectively and Productively Manage Both Files and Components

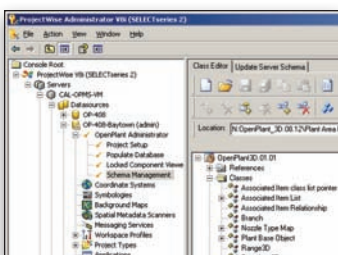
Bentley OpenPlant ModelServer V8i is the first plant design server software to effectively and productively manage both files and components. This capability is empowered by the software's intraoperability with ProjectWise® V8i server for team collaboration in projects that increasingly are globally sourced and often loosely coupled. This integration with ProjectWise V8i enables yet another first for OpenPlant ModelServer: interoperable workflows across multiple design systems, including Intergraph's PDS and Bentley's AutoPLANT® and PlantSpace.



The Model Component browser provides designers complete insight into the project to see which components are available for checkout



The Model Component browser provides a concise breakdown of the contents of the model repository



OpenPlant ModelServer Administration is integrated with ProjectWise V8i Administrator

Complete Project Control

File management is key to the efficient exchange of deliverables and work packages across different organizations, while component management supports a higher level of abstraction, productivity, and quality of work. Now, users can finally meet both requirements using a single software application. OpenPlant ModelServer V8i reduces project schedules and costs for new design and construction as well as maintenance and retrofit of existing plants. While providing scalability from small to very large projects, OpenPlant ModelServer V8i gives control to the individual designer. As components are finished, they can be checked in for other designers to check out and review. There are no predetermined models or files that have to be created on project start. Projects can start sooner and provide flexibility to design team locations.

Global Project Management

Utilizing ProjectWise V8i designers can easily access files and components, as well as strictly control versions, regardless of their global work location or connectivity status.

Global Tracking and Management of Design Work

All project participants can access the current status of all components, using a simple-to-use interface. Users can quickly create reports based on any or all project components from any location to provide clear visibility into the design work of today's loosely-coupled, globally-sourced project teams. These reports provide maximum project control and are generated through OpenPlant Reporting V8i, a no-cost reporting application that works in conjunction with OpenPlant ModelServer V8i.

Central Component Repository

All components of a project reside in one central location to reduce collaboration costs. A configurable tree browser

displays information in the model, allowing designers to configure different views, such as what components are being edited. The designer determines the best way to view the data for the task at hand, which helps reduce errors and emissions from the design.

Multiple Discipline Management and Security

OpenPlant ModelServer V8i enables project participants, regardless of discipline and location, access to all files and components of the project. Security within ProjectWise V8i exposes only the proper working set and restricts edits to those users who have been granted permission. This provides consultants or joint ventures access to the project as required, from anywhere in the world.

Automatic Migration

PDS models and piping catalogs and specifications are automatically migrated to ISO 15926 so that PDS data can be readily shared across applications and reused for modifications.

3D Index and Queries

OpenPlant ModelServer V8i allows designers to specify any valid 3D MicroStation component as a volume. This removes constraints as to how the project was configured or set up to predetermine what designers get to work on. Check-out determines what designers work on during the active session, be it a single component, an entire line, complete system, or the entire project. Once the component is checked in, it updates the central repository and other project team members can begin working on that component.

Revisions and Versioning

Since OpenPlant ModelServer V8i works in conjunction with the underlying technology of ProjectWise V8i, versions of all documents checked in can be automatically versioned. This applies to any of the deliverables, such as isometrics, orthographic drawings, or reports.

System Requirements

ProjectWise Integration Server V8i (SELECTseries 2)

ProjectWise Administrator V8i (SELECTseries 2)

ProjectWise Explorer V8i (SELECTseries 2)

Operating System:

Windows Server 2003 R2, Standard or Enterprise Editions (32-bit), Windows Server 2003 R2, Standard or Enterprise Editions (64-bit), Windows Server 2008 SP2, Standard or Enterprise Editions (64-bit), Windows Server 2008 R2, Standard or Enterprise Editions (64-bit), Windows Vista Enterprise (32-bit) SP1 or later, Windows Vista Enterprise (64-bit) SP1 or later, Windows 7 (32-bit), Windows 7 (64-bit)

Processor:

2 GHz x86 or x64 processor or better, dual-core or multiple-processor architecture is strongly recommended

Memory:

2 GB memory, 4 GB or greater recommended

Hard Disk:

10 MB free disk space (over the requirements for ProjectWise Integration Server V8i)

Graphics Card:

Any card that fulfills MicroStation V8i requirements - Graphics card supported by DirectX 9.0c, 256 MB of video memory or higher is recommended

Find out about Bentley at: www.bentley.com

Contact Bentley

1-800-BENTLEY (1-800-236-8539)
Outside the US +1 610-458-5000

Global Office Listings

www.bentley.com/contact

Bentley OpenPlant ModelServer V8i At-A-Glance

Central Management

- Synchronized reference data of files worked on by other team members providing most up-to-date designs
- Only delta change transmissions to central database
- ProjectWise V8i's built-in configuration for complete design data security
- Check-out / -in from a central source
- Sites can update changes on a regular basis
- Audits of who has worked on which component
- Check-out / in of only area of plant model needed for design work by team member
- No wait time for file downloads and locked files
- Refreshed database when team members update their changes in real time

Component Browser

- Visibility to all available components by connecting into the project server via ProjectWise V8i
- Reduced check-out to only those elements needed to work on
- Locked access to components for all other users when checked out of repository
- Additional or reduced access to components as required for a particular team member

Refresh Data

- No need to check back in components to update central repository; all updated components, plus any referenced-out components, received by designer by clicking on Refresh All

Project Status

- Access to all components in the central repository in ProjectWise V8i so report can be run against the complete project to show status
- Easier project coordination due to centralized management

ProjectWise V8i Managed Workspace

- Centrally managed workspace configuration in ProjectWise V8i for consistent quality of work
- Local working model with most current data each time a user checks out a component
- Locked in-use components to guard against modifications by other team members
- Reduced administration as a result of updating one source of files that will be updated to each user on next login
- Ability to disconnect from server by client machine, freeing users to work where most suited for the task at hand
- Central configuration setting for all working on the same project

- Flexibility for workers through offsite capability

ProjectWise V8i Delta File Transfer

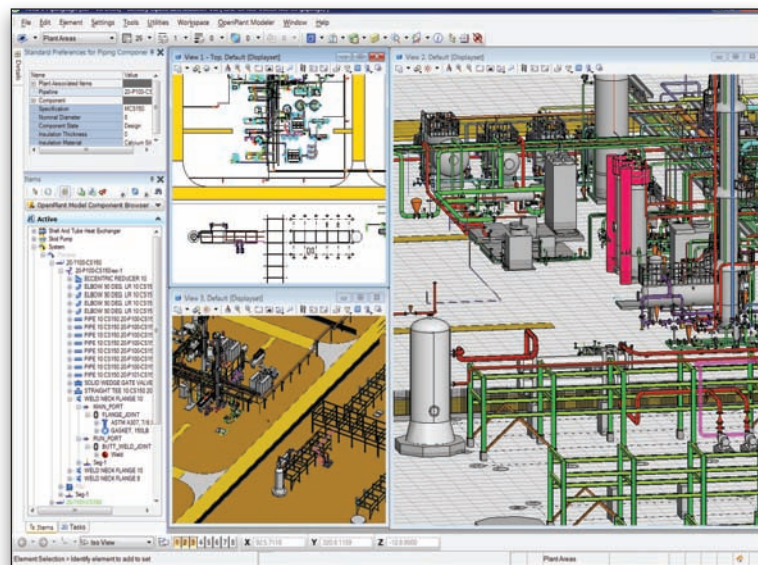
- Delta file transfer feature of ProjectWise V8i enables substantially faster file transfers
- Reduced network loads by transmitting only the part of a file that is changed
- Team members work in real time across offices and geographies

Maximized Project Control

- OpenPlant Reporting V8i gives users power to create reports easily and quickly
- Free reporting application communicates with Bentley OpenPlant ModelServer
- Tracking of any and all project components regardless of team location

Administration

- OpenPlant ModelServer Administration is integrated with ProjectWise V8i Administrator



The Model Component browser provides a concise breakdown of the contents of the model repository