



Bentley® OpenPlant Modeler V8i

Work Remotely or Connected with the Market's Most Productive and Easy-to-Use System

Bentley OpenPlant Modeler V8i is the first 3D plant modeling software to natively use an ISO 15926 core data model as specified by the iRING user community. Like all of the new OpenPlant products, OpenPlant Modeler V8i incorporates the ongoing and ever-advancing capabilities of MicroStation® V8i, the market-leading platform for plant creation and every infrastructure discipline. Uniquely, OpenPlant Modeler V8i natively supports workflows combining all pertinent plant software standards, including, in addition to DGN, RealDWG, point clouds, and PDF.



The Model Component browser provides a concise breakdown of the contents of the model repository



Details of components can be seen in a Grid View for easy viewing



The task pane allows the designer to easily find all tools needed in one location

Most Productive and Easy-to-Learn Tool

OpenPlant Modeler V8i is a specification-driven modeling system that matches how a designer works. Designers can rapidly and easily create 3D models using the widely employed and highly intuitive MicroStation V8i user interface, making it the most productive and easy-to-learn "industrial-strength" plant design environment ever introduced. With the assistance of MicroStation features such as AccuDraw® and AccuSnap, the placement of components requires a few simple clicks of the mouse.

Easy Reuse of Corporate Standards

Existing designs, models, and associated data, as well as catalogs and specifications from PDS, AutoPLANT®, and PlantSpace®, can be easily reused, enabling faster project start-ups and continuity of design.

Open, No Proprietary Lock-In

Existing PDS designs can be reviewed and augmented, through ISO 15926 protocols and/or i-models, to escape proprietary lock-in.

Breakthrough Value

With Bentley's Designer for Piping Passport Subscription (OpenPlant), individual piping designers gain access to Bentley OpenPlant Modeler V8i, Bentley OpenPlant Isometrics Manager V8i, ProSteel Modeler, ProjectWise® Passport, and ProjectWise Clash Resolution Visa – plus complete virtual training – for the single annual fee that is typically less than the Unix-era maintenance fees of other vendors' proprietary piping design systems.

Freedom of Work Location

ProjectWise V8i Managed Workspace provides a centrally administered workspace, freeing the designer from having to be connected at all times and allowing work to be performed

in a disconnected mode. All updates to design session and workspace are transferred upon connection.

Reporting

OpenPlant Reporting V8i is a free module that allows reports to be generated from checked out components or from the OpenPlant ModelServer V8i repository. Custom reports can be easily created and stored, using Excel or Crystal Reports as the reporting format.

Piping Specification from Multiple Formats

In addition to OpenPlant's own catalog and specification tools, OpenPlant Modeler V8i can directly read piping catalogs and specifications from PDS, AutoPLANT and PlantSpace allowing for faster project startup and reduced administration and checking costs.

Model Component Browser and Pipeline Manager

The Model Component Browser provides designers complete insight into the project to see which components are available to check out. The dynamic check-in and check-out process, working with OpenPlant ModelServer V8i, allows the designer to add or subtract components from the working session as required. This allows the user to work on an individual line, a complete system, or the whole project.

OpenPlant ModelServer V8i, which executes on top of ProjectWise V8i, allows the designer to be located anywhere in the world for a truly global project execution.

Modern Review and Publishing Functionality

The user can use the latest MicroStation V8i capabilities, such as Dynamic Views, to make it much easier to work in large models. Plotting is available to Adobe PDF (2D and 3D) and many other formats.

System Requirements

Bentley OpenPlant Modeler V8i (SELECTseries 2)

ProjectWise Explorer V8i (SELECTseries 2)

Operating System:

Windows Vista Enterprise (32-bit) SP1 or later, Windows Vista Enterprise (64-bit) SP1 or later, Windows XP Professional SP2 or later, Windows 7 (32-bit), Windows 7 (64-bit)

Prerequisites for Bentley Desktop Applications v08.11.07.03

Windows Installer Version 3.1v2, Microsoft .NET Framework 3.5, Microsoft XML Parser (MSXML) 6 SP1 (32- and 64-bit), Microsoft Visual Basic for Applications Core, Microsoft Visual Basic for Applications localized, DirectX 9c, DHTML Editing Control for Applications (with Vista compatibility)

Processor:

Intel Pentium 4 processor or AMD Athlon, 3.0 GHz or greater,

Intel or AMD Dual Core Processor, 2.0 GHz or greater

Memory:

2 GB memory or greater recommended

Hard Disk:

900 MB free disk space (which includes the 400 MB install footprint for a complete installation)

Graphics Card:

Any card that fulfills MicroStation V8i requirements - Graphics card supported by DirectX 9.0c, 256 MB of video memory or higher is recommended

For Windows Vista, a DirectX9 capable workstation class graphics card with 128 MB or greater is required

Find out about Bentley at: www.bentley.com

Contact Bentley

1-800-BENTLEY (1-800-236-8539)
Outside the US +1 610-458-5000

Global Office Listings

www.bentley.com/contact

Bentley OpenPlant Modeler V8i At-A-Glance

Ease of Use

- Standard MicroStation® capabilities (move, stretch, copy, mirror, undo)
- AccuDraw, AccuSnap and Key point Snaps "snaps in" to existing components
- New components aligned either by XYZ or distance / angle
- Automatic connectivity creation
- Faster and more intelligent editing and modification of designs, e.g. automatically healing moved pipes
- Designed to work how piping designer thinks
- MicroStation UNDO quickly rectify mistakes, such as accidentally deleting a design element
- MicroStation copy / paste
- Quick and easy copying of reusable design information from other models into existing design
- Engineers can focus on improvements to design without having to revalidate data

Integration

- Ability to publish i-model for use with ProjectWise Navigator and Clash Detection or Schedule Simulation
- Ability to export piping components to Bentley's Plant Exchange format (PXF) for use with applications such as Bentley AutoPIPE®
- MicroStation Reference File to provide support for information from any discipline to be attached to current design session, supporting formats such as DGN, DWG, DXF, 3DS and many others

Re-Useable Catalogs and Specifications

- Reuse of existing AutoPLANT, PlantSpace and PDS piping specifications, thus reducing project startup time
- Components limited to those that meet piping specifications
- Compliance enforcement with critical decisions
- Checking time reduction

- More experienced designers freed to work on more complex design and engineering tasks

Open Data Model

- Based on ISO 15926, allowing re-useable data
- Data exchange between users and applications based on open data model (ISO 15926)
- Support of individual team's choice of application

Component Features

- Task-based menu that groups like components together (piping, equipment, cable tray)
- Element manipulators that provide easy editing
- Automatic placement of fittings
- Ability to connect face-to-face fittings
- Global or relative placement of a component
- Alignment to intersection with other components
- Ability to insert from any point on a component (such as branch, center, or run of a tee)
- Ability to change size and or specification of individual components or entire line

Specification Driven

- Specification tool that quickly creates piping specifications from scratch or by editing example specifications
- Inclusion of catalogs and common specs
- Ability to bring specifications from AutoPLANT, PlantSpace® Design Series or PDS® into system
- Specification defines automatic bend, flange, and branch selections

Catalog and Specification Mode Switching

- Reduction of project delays caused by lack of project specifications
- "Best guess" at time of placement to create as accurate a model as possible

- Validation or correction of components based on component specification

Practitioner Pricing Model, One Server per Project

- Price point and user support that competition cannot offer

Native Support for PlantSpace, AutoPLANT and PDS Specs

- No re-entry/re-check of tested specifications from previous projects in other systems

MicroStation Rendered View Attributes

- Better visualization of model
- Minimized risk of connections to wrong components or creation of unintentional interferences

ProjectWise Managed Workspace

- Designers freed to work in connected or disconnected mode
- Downloads of all current configurations for project, including centrally managed catalogs and specifications
- Connection to the ProjectWise server when available

Material Reporting

- Powerful queries that allow selection by any property or field
- Global reports centrally generated from any or all project components

Point Cloud Support

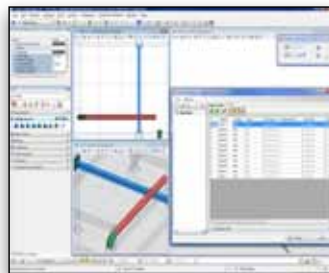
- Pointtools, delivered as part of Bentley platform technology, to display point clouds during modeling

Clash Detection

- Interface to Clash Detection included (requires purchase of separate Clash Detection VISA)

ProjectWise PDx Dynamic Review Service

- Reusable designs from past projects
- Upgraded models from PDS into OpenPlant



Clashes can be detected and reviewed interactively