



Bentley® OpenPlant Isometrics Manager V8i

Generate Intelligent Isometrics in a Neutral Format

Piping isometrics are among the most important deliverables from plant designs. Bentley OpenPlant Isometrics Manager V8i is the first software to extract intelligent isometric information from any iRING compatible 3D model, and do so automatically and in real time. These uniquely intelligent isometrics are both searchable and reportable for use in materials management and procurement, fabrication, construction, and operations.

Powerful Functionality for Isometrics Production

By controlling isometric production through project-based rules, OpenPlant Isometrics Manager V8i allows isometrics to now be automatically produced by document control or other supporting project personnel, freeing up piping designers to focus on design activities. This powerful new functionality is valuable to not only designers and constructors, but also owner-operators. The latter can use it to generate required legal documents from the as-built 3D model, regardless of how the model is managed.

Intelligent Isometrics

OpenPlant Isometrics Manager V8i automatically creates an intelligent 3D file, which includes the graphics and associated data inside the design file. The designer can view a browser tree of the components, search for content on the document, or create new reports and queries based on the content of the documents. The white space engine in OpenPlant Isometrics Manager V8i puts labels, dimension, and other text in intelligent locations on the drawing for legibility.

Isometric Management

Isometrics can be produced based on a design state from OpenPlant ModelServer such as "Issued for Construction." Rules can be defined to control what type of isometric to produce and, more importantly, whether an isometric can be created if the components are not at a predetermined design state. Time spent checking and reviewing isometrics is now focused on the proper documents where the status is known.

Multiple Styles

OpenPlant Isometrics Manager V8i provides for the creation of many isometric styles for specific purposes in the project, each with their own set of rules for design status and component types. The resulting isometric drawings can be placed into their own folder within ProjectWise V8i for versioning and distribution to the global project team. Delivered styles include as-built, check, IFC, stress, and tracing. Additional user-defined styles can be created to suit individual requirements. ProjectWise V8i provides for remote access, allowing users such as fabricators to see the most current information.

Automatic Version Control and Global Distribution

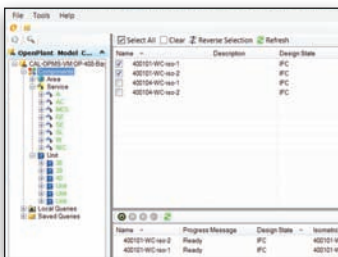
OpenPlant Isometrics Manager V8i is integrated with ProjectWise® V8i, allowing finalized isometrics to be posted directly into the document repository. If a previous version exists, ProjectWise V8i will automatically create a new version, leaving the old version intact for possible future review. Team members, regardless of location, can access the most current versions of design documents.

Centralized Isometrics Production

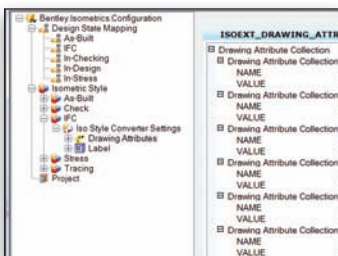
OpenPlant Isometrics Manager V8i is a stand-alone application that allows anyone with access to OpenPlant ModelServer V8i to generate isometrics once the drawings are ready. Thanks to its simplified interface, isometrics can be produced by document control or other supporting personnel, freeing up more experienced designers for detailed design work.

Real-Time, Automatic Isometric Production from Multiple Systems

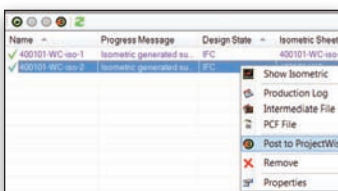
OpenPlant Isometrics Manager V8i permits the production of isometrics from diverse sources, such as PDS, AutoPLANT®, or PlantSpace®. This allows designers the freedom to work in the design application of their choice, while lowering the cost of having to maintain both expensive personnel and design seats in order to produce quality isometrics.



Simple interface to control isometric drawing creation



Using a direct connection to ProjectWise provides integral document management through OpenPlant Isometrics Manager



Automatic version control and global distribution

System Requirements

ProjectWise Explorer V8i
(SELECTseries 2)

Bentley OpenPlant Modeler V8i
(SELECTseries 2)

Network access to OpenPlant
ModelServer V8i

Operating System:

Windows 7 (32-bit), Windows 7
(64-bit), Windows Vista Enterprise
(32-bit) SP1 or later, Windows Vista
Enterprise (64-bit) SP1 or later, Win-
dows XP Professional SP2 or later

Prerequisites for Bentley Desktop Applications v08.11.07.03

Windows Installer Version 3.1v2,
Microsoft .NET Framework 3.5,
Microsoft XML Parser (MSXML) 6
SP1 (32- and 64-bit), Microsoft Visual
Basic for Applications Core, Micro-
soft Visual Basic for Applications
localized, DirectX 9c, DHTML Editing
Control for Applications (with Vista
compatibility)

Processor:

Intel Pentium 4 processor or AMD
Athlon, 3.0 GHz or greater,

or

Intel or AMD Dual Core Processor, 2.0
GHZ or greater

Memory:

2 GB memory or greater recommended

Hard Disk:

Requires 30 MB minimum free hard
disk space in addition to the Open-
Plant Modeler V8i requirement of 400
MB minimum free hard disk space

Graphics Card:

Any card that fulfills MicroStation V8i
requirements - Graphics card supported
by DirectX 9.0c, 256 MB or higher of
video memory is recommended

**Find out about Bentley
at: www.bentley.com**

Contact Bentley

1-800-BENTLEY (1-800-236-8539)
Outside the US +1 610-458-5000

Global Office Listings

www.bentley.com/contact

Bentley OpenPlant Isometrics Manager V8i At-A-Glance

Interoperability

- Ability to generate PCF file to pass data to existing fabrication systems
- Produces isometrics in a single application from multiple applications, such as PDS, AutoPLANT, and PlantSpace

Isometrics from Single Configuration and Location

- Common set-up and configuration
- Isometrics with the same look and feel from a central location

Complete Information from Design Model Components

- Intelligent queries against components, i.e. containing identical information to 3D design models
- Relevant data available in other areas of design and construction process

Stand-Alone Isometric Production

- Isometric production removed from the piping design application

Status-Controlled Isometrics Production

- No isometrics generation of a specific style allowed unless status of each component has been elevated

to proper status allowing creation by piping designer

Common Information

- Representation of components in different views, yet originating from same object, by linking model and isometric
- Easy navigation from model to isometrics and back

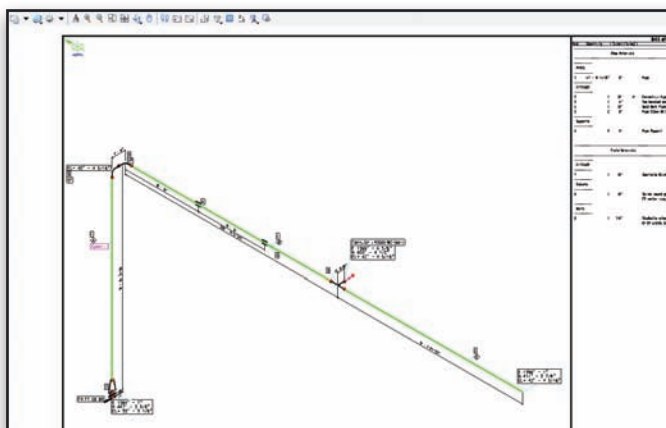
Usability

- Ease of use – designed for non-piping users
- Query tool to easily search for a specific group of components, such as a line number
- Customizable drawing attributes for additional pipeline information
- Option to generate different isometric production log files
- Simple setup of isometrics styles – no more switches to remember
- Project-driven drawing output and bill-of-material definitions
- User-configurable reporting
- Ease of isometrics symbols creation using MicroStation cells
- Creation of intelligent 3D isometric drawings
- Fully configurable bill-of-material layout

- User-configurable drawing layouts
- Editing of isometrics with PlantSpace Isometrics
- No requirement to understand cryptic ISOGEN switches, auxiliary file structures and settings to obtain proper output through simple GUI based configuration

ProjectWise V8i Integration

- Tight integration with ProjectWise V8i
- Easy right click option to post isometric drawings into ProjectWise V8i
- Meta data inclusion with document
- Locally executed user queries, or queries saved to ProjectWise V8i for team access
- Isometric name expression editor
- Customized revision setting
- Engineering content browser to view relationships between components and all component properties, allowing a view of all connectivity and inline components for pipelines
- Design-state-based isometric creation
- Element information dialogs to browse specific components or sets of components



GUI driven configuration tools provide simple isometric configuration