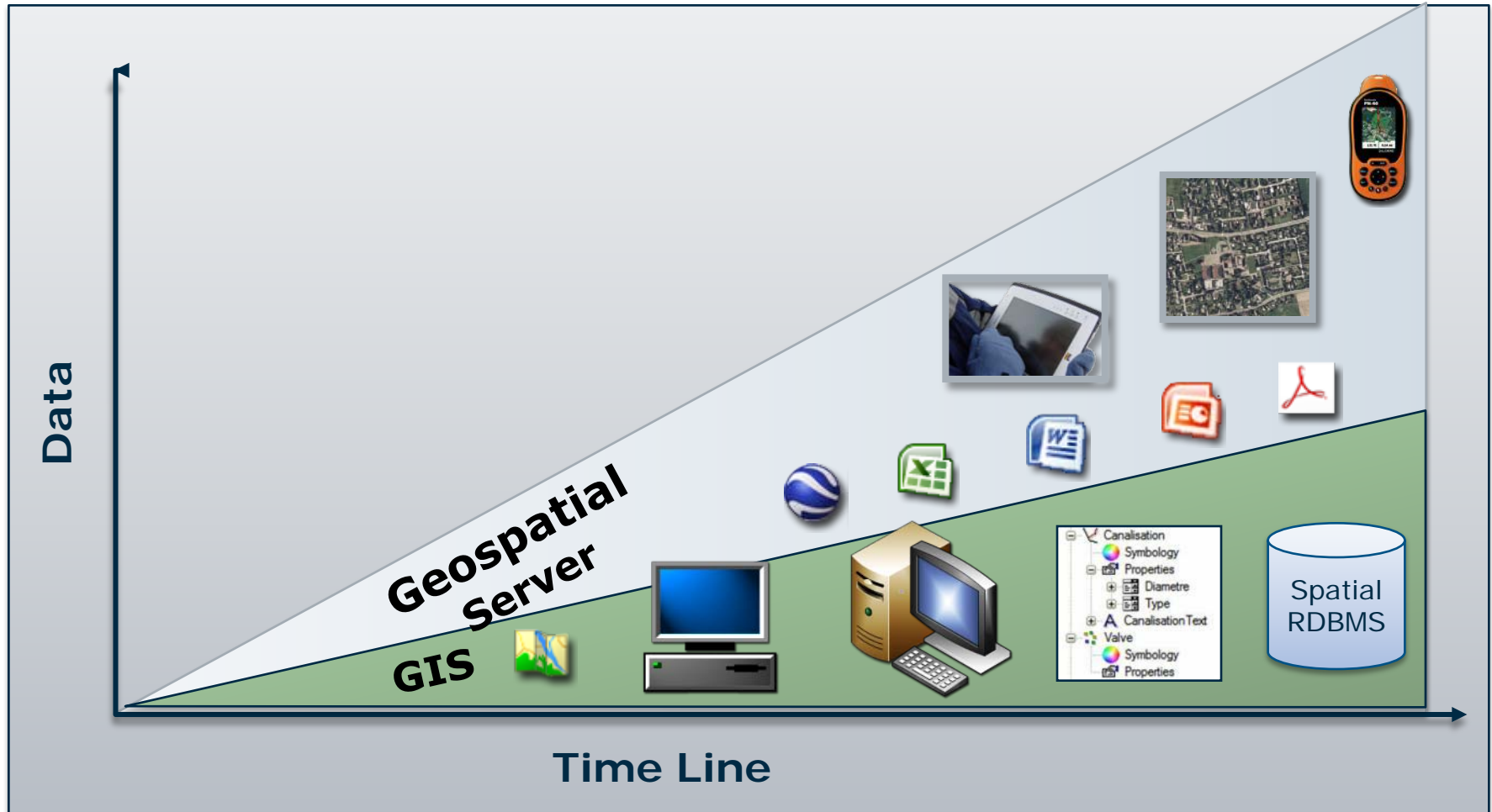


Bentley Geospatial Server V8i (SELECTseries 1)

Information/Data is Everywhere

- The information explosion
 - becoming virtually impossible to manage without dedicated tools
- Unmanaged information
 - Constant risk of poor decision making
- Data formats, data quality, metadata must be managed
- Two types of information must be managed:
 - Structured information (fixed schema)
 - Unstructured information (no fixed schema)
 - 80 percent of business is conducted with unstructured information (Gartner Group)
 - The quantity of unstructured data doubles every three months (Gartner Group)

The Bentley Geospatial Server Way



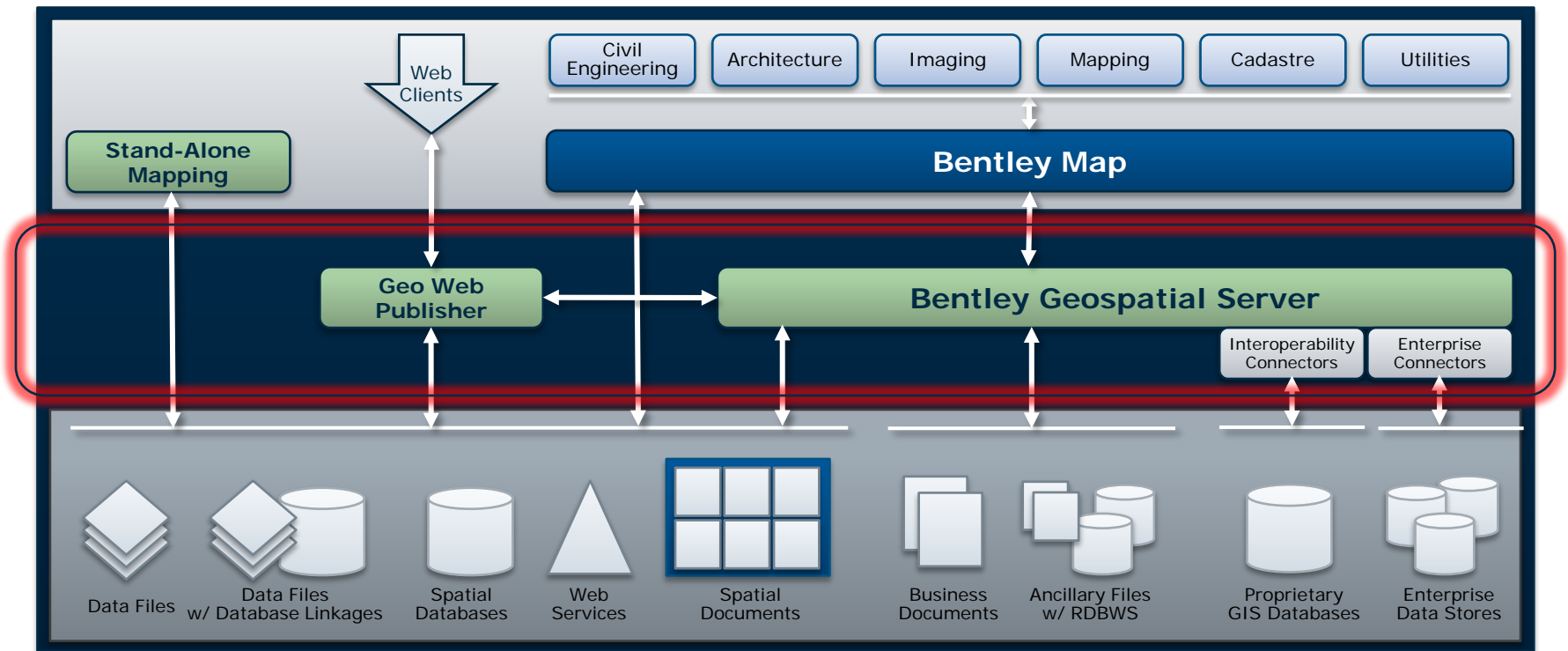
Why Bentley Geospatial Server?

- Large volume of heterogeneous data
 - (GIS data, document, images, projections ...)
- Easily find data about a location or asset
- Access multiple versions of data
- Manage user-level access to data
- Edit in spatial databases using a disconnected/long transaction workflow

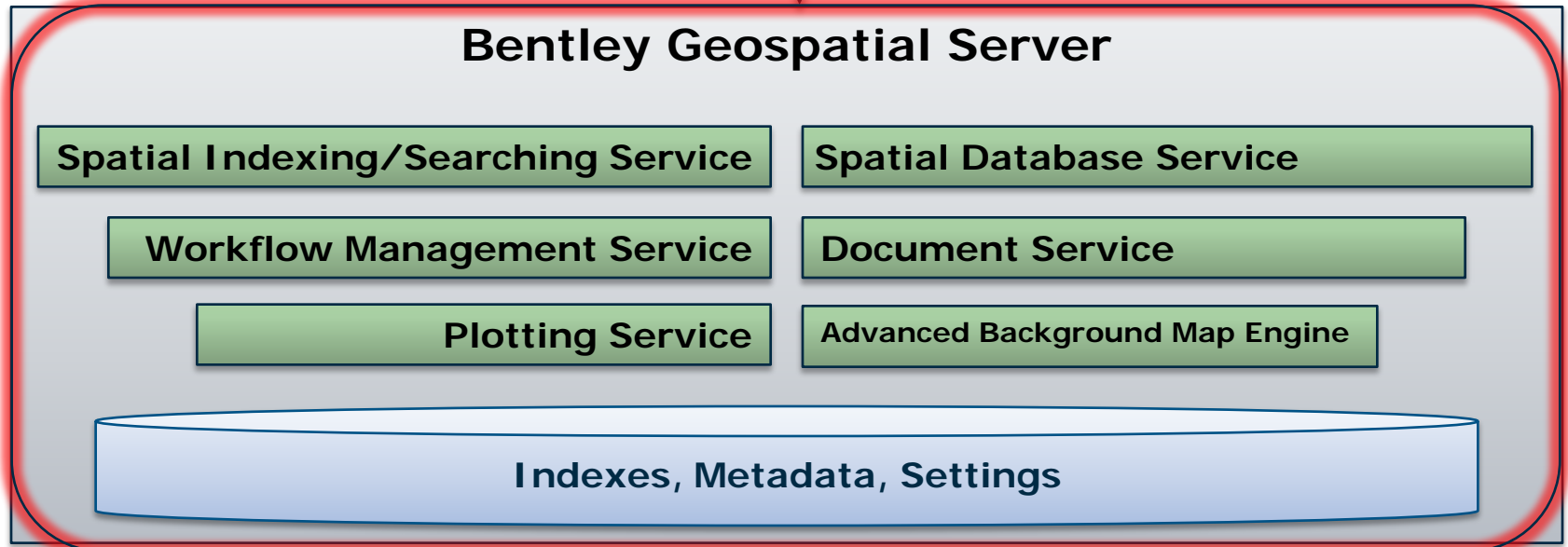
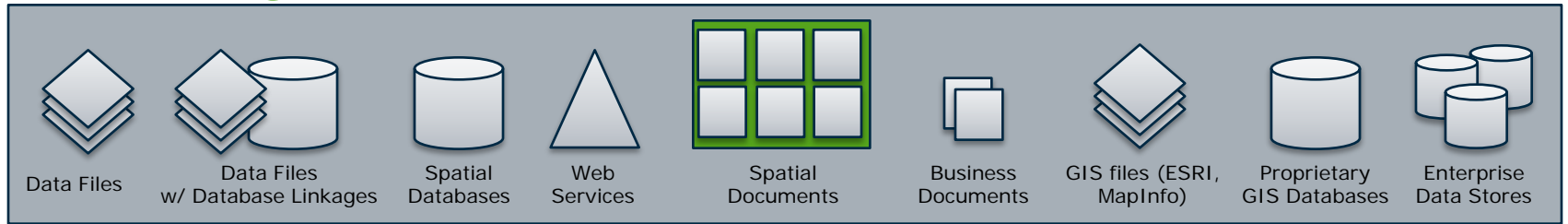
What is the Bentley Geospatial Server?

- A portfolio of the following products:
 - ProjectWise Integration Server
 - ProjectWise Geospatial Management
 - ProjectWise Connector for Oracle
 - ProjectWise InterPlot Server
- Integrated for geospatial needs
- Five services:
 - Document Service
 - Spatial Indexing/Searching Service
 - Workflow Management Service
 - Spatial Database Service
 - Plotting Service
- (ProjectWise Connector for ArcGIS for ESRI users)

Architecture: The server tier



Bentley Geospatial Server Architecture



Value proposition

Manage

Edit

Index

Plot

Geospatial
information

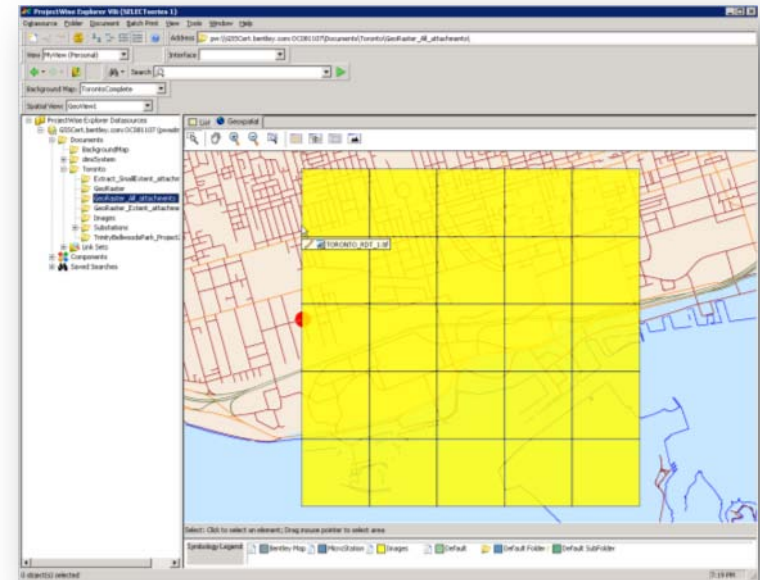
Find

Archive

Organize

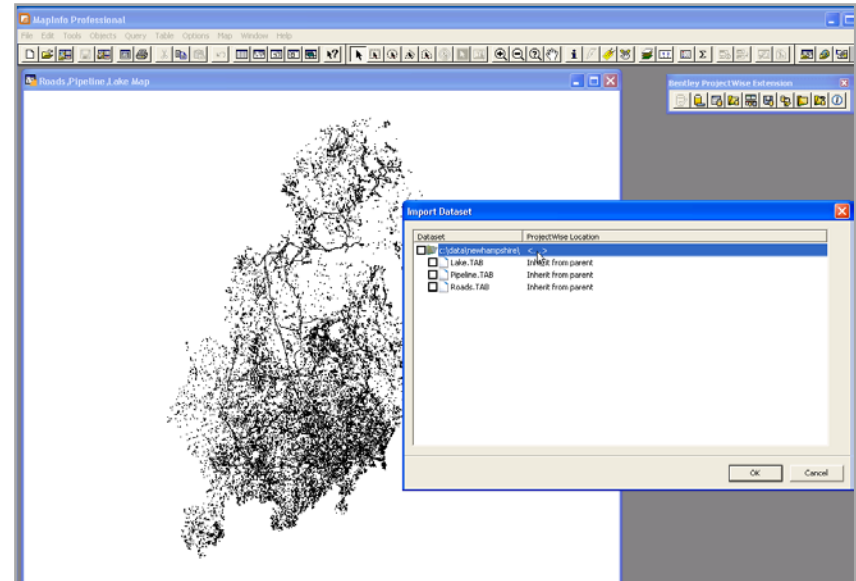
Top Features

- Advanced background maps supporting many spatial data formats
 - Streamed CAD/raster
 - GIS layers
 - Spatial database layers
 - WMS
- Spatial locations/spatial search
- Linear referencing



Top Features

- iDesktop for:
 - MapInfo
 - ESRI ArcMap
- Supports many GIS formats:
 - ESRI Personal Geodatabase
 - ESRI Shapefile
 - MapInfo TAB
 - MapInfo MIF/MID
 - MapInfo WOR



Top Features

- Oracle Spatial support
 - Transactional editing
 - Live
 - Disconnected
 - History and valid time
 - Oracle GeoRaster
 - Oracle Spatial 3D editing
 - Design Link support

