



Image courtesy of Roberto Borgo

PROJECT SUMMARY

Organization
IRIDE Energia

Solution
Utilities

Project Objective

Introduce a new GIS and network engineering system and integrate it with the ERP and CRM systems to improve enterprise productivity

Products Used

- Bentley Map
- Bentley Geospatial Server
- Bentley Geo Web Publisher
- MicroStation

FAST FACTS

- IRIDE Energia introduces a new GIS system based on a services oriented architecture
- Bentley Geospatial Server is deployed to support enterprise access to Oracle Spatial and to define and support enterprise workflows
- Bentley's XFM technology reduces the cost of system upgrades since no re-coding is required to support integrations when the software is upgraded
- IRIDE Energia has seen a 20% improvement in productivity in functions such as planning, engineering design, field engineering and customer service

BENTLEY® GEOSPATIAL SERVER ENABLES MULTI-UTILITY GIS FOR IRIDE ENERGIA

IRIDE Group is one of the main Italian multi-utilities comprising companies that manage water, electricity, public lighting, gas and district heating networks. IRIDE Energia uses Bentley products to support its multi-utility GIS and the company's geospatial engineering workflows.

The company has strong ambitions to continue its pattern of growth in Italy and in order to support these ambitions, the company began a process of updating its GIS. IRIDE Energia began using Bentley products in 2001, expanding their use in 2003 and then, in 2006, the company began planning a next-generation GIS called "New SIT".

The goals behind this new GIS were to achieve even higher efficiency in the management of the multi-utility networks that the company operates.

The objective was to achieve a minimum increase in productivity of 20% across many functions such as planning, engineering design, field engineering and customer service, all of whom use the new system. The new system is built around the Bentley V8 XM Edition products, all of which are XML Feature Modeling (XFM) enabled. The system utilizes Bentley Map™ for map management, engineering design and data update processes. The Bentley® Geospatial Server supports a number of functions including enterprise access to Oracle Spatial, workflow management, enterprise printing/plotting/publishing, and

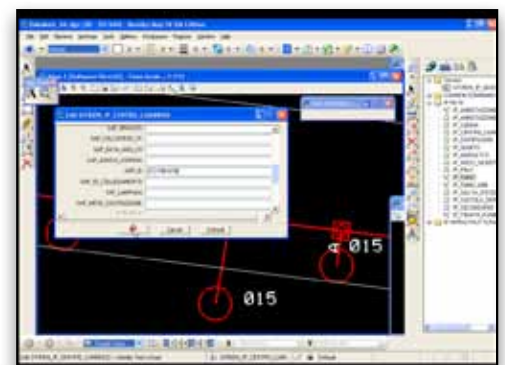
engineering documentation management across a distributed enterprise. In addition, IRIDE Energia uses Bentley® Geo Web Publisher™ for publishing GIS and engineering information to the company's Intranet. The reasons that Bentley technology was chosen are:

- All of Bentley's products are intra-operable one with another
- The products support a service oriented architecture
- The products support an industry standard database in the form of Oracle Spatial
- XFM technology reduces the cost of system upgrades since no re-coding is required to support the integration between various applications when software is upgraded
- Bentley products support Web services

Bentley Geospatial Server has brought substantial benefits to IRIDE Energia: Bentley Geospatial Server allows the GIS database to be integrated with SAP (for ERP) and with the existing CRM system so that system maintenance information and customer data can be accessed and analyzed spatially by the GIS group and the management team. Bentley Geospatial Server is also used to support the work order management process through its configurable workflow capabilities. Managers can now easily access information on the status of any work order.



The work order management system extracts DGN files from the Oracle Spatial database.



DGN files are easily edited using Bentley Map.

"Thanks to Bentley's technology, we now believe that we have one of the most advanced and functional utility GIS platforms in the world – as befits a world-class company like IRIDE Energia"

ABOUT BENTLEY

Bentley Systems, Incorporated is the global leader dedicated to providing comprehensive software solutions for sustaining infrastructure. Architects, engineers, constructors, and owner-operators are indispensable in improving our world and our quality of life; the company's mission is to improve the performance of their projects and of the assets they design, build, and operate. Bentley sustains the infrastructure professions by helping to leverage information technology, learning, best practices, and global collaboration – and by promoting careers devoted to this crucial work.

For more information, visit www.bentley.com

BENTLEY OFFICES

Corporate Headquarters

685 Stockton Drive
Exton, PA 19341 USA
1-800-BENTLEY (1-800-236-8539)
Outside the US +1 610-458-5000

Bentley Systems Europe B.V.

Wegalaan 2
2132 JC Hoofddorp
Netherlands
+31 23 556 0560

Bentley Asia

Unit 1402-06, Tower 1,
China Central Place,
No. 81 Jianguo Road,
Beijing, 100025, China
+86 108 518 5220

Bentley Geospatial Server also supports multi-mode editing of the GIS and engineering data. Bentley Geospatial Server enables live, multi-user editing of Oracle Spatial data and also "offline" editing where data is taken into the field, redlined or updated and then synched back into the database. The XFM technology makes this an easy and reliable process.

The new GIS also takes advantage of the network connectivity logic to track the network from any start point to an end user location or outage point.

Further, any object can be queried to determine its source of power, maintenance activities can be simulated and customers affected by outages can be identified in real time and alerted correspondingly.

As Mario Cipriano, Chief Information Officer at IRIDE Energia explains, "We have ambitious plans for our company and these plans predicate a cutting-edge GIS. We want a system that is powerful, flexible and based on a service oriented architecture. That is why we chose the Bentley solution."

Mr. Cipriano continues, "The XML Feature Modeling capability is also very important to

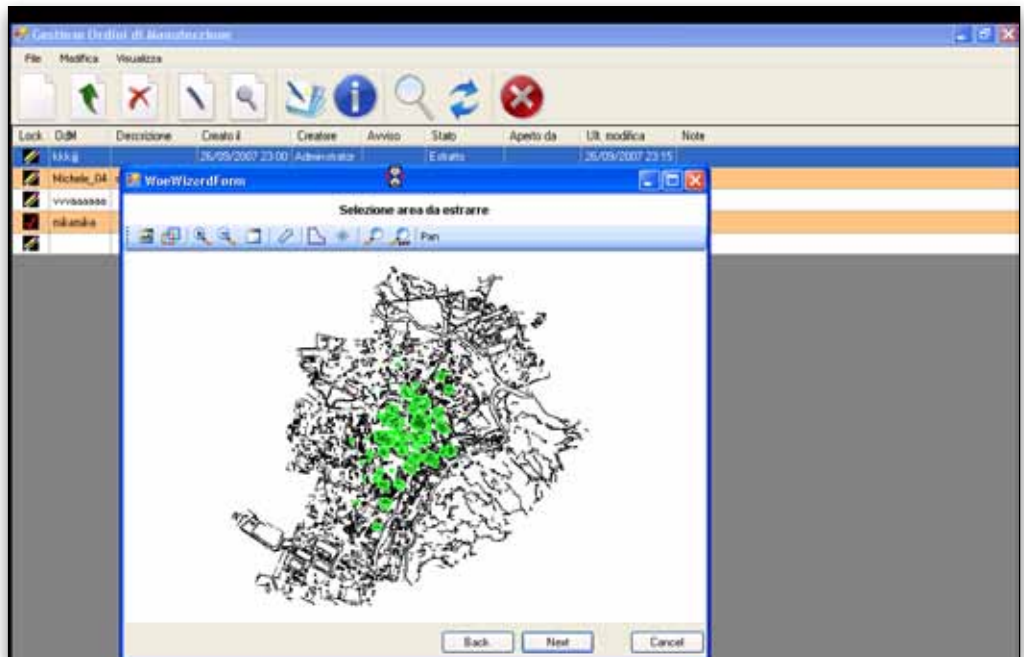
us and because XFM is object-oriented it means that we can dispense with re-coding connections between different software systems each time there is a software upgrade. This saves significant time and money."

The value of the system lies in the fact that the GIS and engineering data are not kept in separate databases or in functional silos.

The goal of this project from day one has been to have a single source of data available to anyone who manages or supports the utility networks in any function, be that planning, engineering design, field engineering, customer service and more.

The GIS and network topology data are also exported to separate analysis and modeling environments through Web services to help specialists optimize the networks and to achieve maximum performance.

Mr. Cipriano concludes, "Thanks to the Bentley technology, we now believe that we have one of the most advanced and functional utility GIS platforms in the world – as befits a world-class company like IRIDE Energia."



Bentley Geospatial Server automatically displays the requested DGN file.