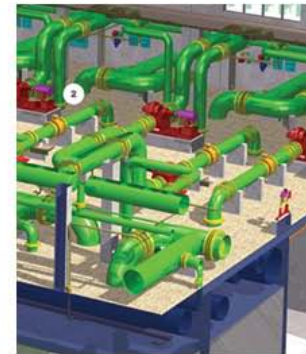
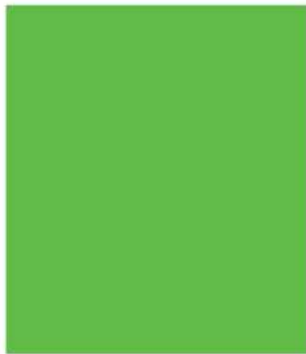


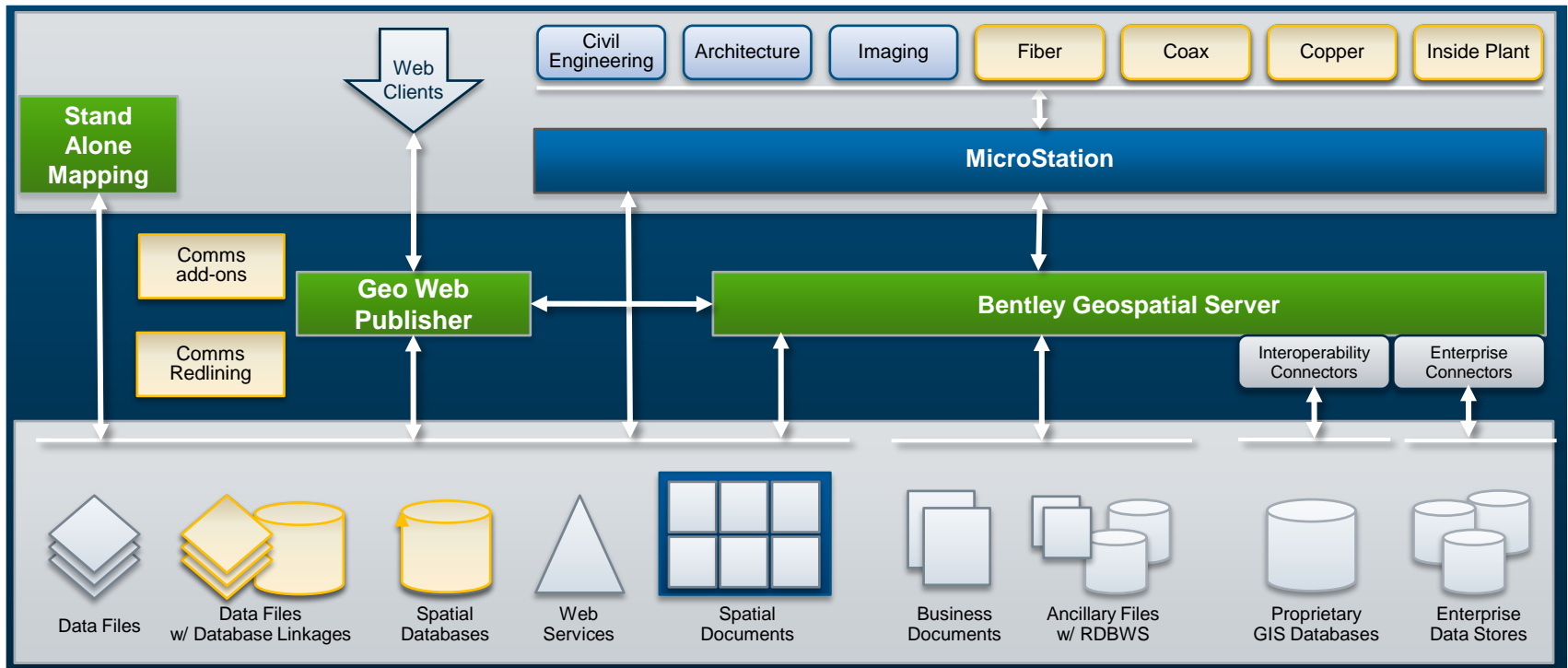
Bentley Geo Web Publisher for Communications V8i Overview



What Is Bentley Geo Web Publisher for Communications?

- Telecommunications enhancements to Bentley Geo Web Publisher
- It is a web GIS
 - Easy to implement, high performance
 - Brings together multiple data sources and databases
 - Supports collaborative workflows
 - OGC compliant, WMS/WFS server
- Advanced creation and administration tools for GIS web applications
- End user tools for map navigation, querying, analysis, reporting, mark-up and editing

Architecture

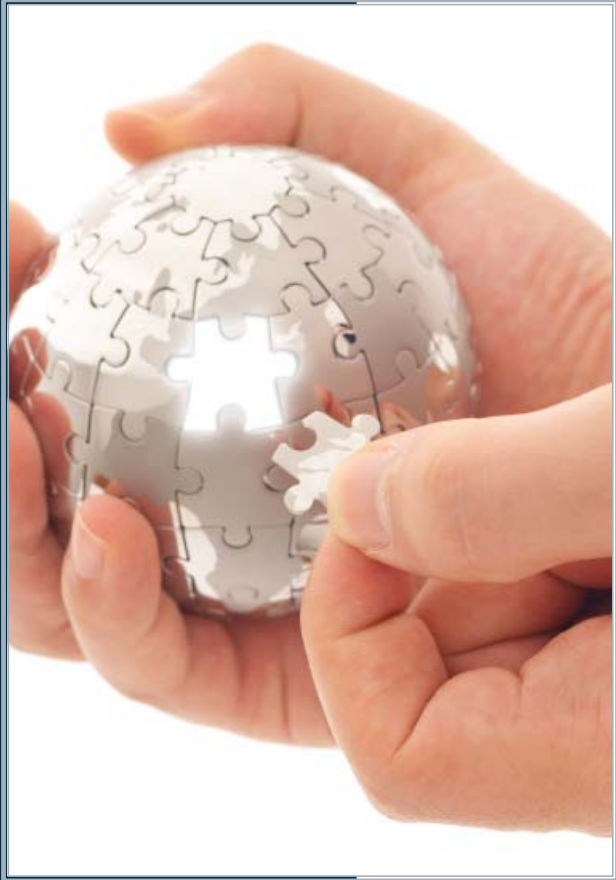


Challenges addressed

1. Deliver communications network information to casual users
2. Working with disparate data sources
3. Getting changes back to the engineering department
4. No web GIS deployed due to cost, complexity, and ongoing maintenance requirements

Value – User Benefits

- Publishes graphical and non-graphical data
- Supports a variety of data sources
- User collaboration
- Web GIS application creation and administration:
 - Via easy-to-use tools for generating fully featured GIS web sites
 - Low cost of ownership, no development required
- Enterprise integration
 - Web Services
 - Authorization



What's New in Bentley Geo Web Publisher for Communications V8i

Site Author

Site Author - Bentley Geo Web Publisher V8i - GWPC-Spatial

File Server Help

Frames Objects

- General Settings
 - Frames
 - Header (100%,7%)
 - Image
 - Top (100%,5%)
 - GWPC Redline
 - Main (80%,66%)
 - Left
 - Right
 - Display
 - Layers
 - Searches
 - Address
 - Amplifier
 - Splice Enclosure
 - Optical System
 - Bottom (10%)
 - GWPC
 - GWPC Web Control

Connected to: http://localhost

Bentley Geo Web Publisher V8i - Microsoft Internet Explorer

File Edit View Favorites Tools Help

Bentley Geo Web Publisher for Communications V8i

Searches

--- Select ---

Display

- Fiber
- Coax
- Boundary
- Strand
- Duct
- Landbase
- Parcel
- StreetAddress
- Inside Plant

Update Info 1:4806 868 x 560 (m) XYMin: -1072,5683458 XYMax: -204,5684018 X=-367 Y=5683913

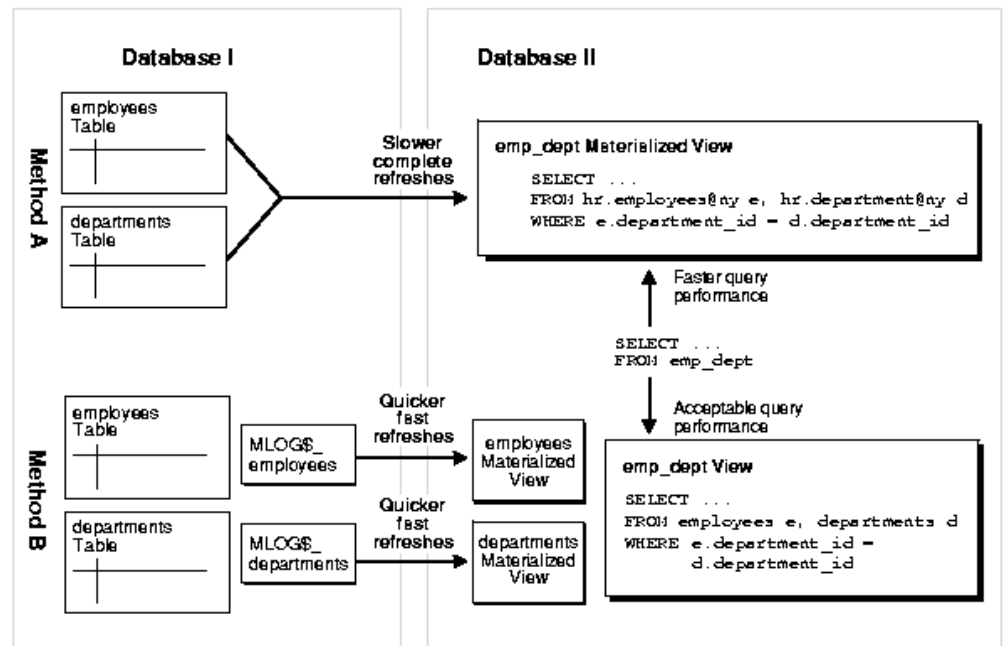
GWPC Web Control

Splice Report Output

Term1	Sheath#1	Buffer	Fiber	Sheath#2	Buffer	Fiber	Term2
700001705-700001703	SHEATH 344	BL	BL	SHEATH 346	YL	BL	700003458-700001703
700001706-700001703	SHEATH 344	BL	GR	SHEATH 346	YL	GR	700003459-700001703
700001707-700001703	SHEATH 344	BL	GR	SHEATH 346	YL	GR	700003460-700001703
700001708-700001703	SHEATH 344	BL	BR	SHEATH 346	YL	BR	700003461-700001703
700001709-700001703	SHEATH 344	BL		SHEATH 346	YL		700003462-700001703
700001710-700001703	SHEATH 344	BL	WH	SHEATH 346	YL	WH	700003463-700001703
700001711-700001703	SHEATH 344	BL	BK	SHEATH 346	YL	BK	700003464-700001703
700001712-700001703	SHEATH 344	BL	BR	SHEATH 346	YL	BR	700003465-700001703

DataLoader

- Materialized Views
 - Ease network and process loads
 - Unique data repository
 - Replication updates
 - Complex Materialized Views



Persistence Mode Support

- DGN persistence mode
 - Materialized view batch file
 - iDPR conversion / automated iDPR conversion
 - Site Author enabled including the Comms add-ins
- Spatial persistence mode
 - Materialized view batch file
 - Oracle Spatial database connection
 - Property-based symbology
 - Non-intelligent layers can be published using iDPR
 - Site Author enabled including the Comms add-ins

Buffer and Fiber Colors

Setup Cross Sections

Name: 288 Diameter: 1.500000

Section List

- 288
- 36
- PIGTAIL
- PON-2x16

Buffers

No.	Name
1	BL
2	OR
3	GR
4	BR
5	SL
6	WH
7	RD
8	BK
9	YL
10	VI
11	RO
12	AQ

1: BL
Level: 1
Style: 0
Weight: 0
HTML Color: 0000FF

Fibers

No.	Name
1	BL
2	OR
3	GR
4	BR
5	SL
6	WH
7	RD
8	BK
9	YL
10	VI
11	RO
12	AQ

1: BL
Color: 1
HTML Color: 0000FF

Buttons: Add, Update, Delete, Save, Delete, Close

**GWPC Web Control
Splice Report Output**

Term1	Sheath#1	Buffer	Fiber		Sheath#2	Buffer	Fiber	Term2
700001705-700001703	SHEATH 344	BL	BL	<+>	SHEATH 346	YL	BL	700003458-700001703
700001706-700001703	SHEATH 344	BL	OR	<->	SHEATH 346	YL	OR	700003459-700001703
700001707-700001703	SHEATH 344	BL	GR	<+>	SHEATH 346	YL	GR	700003460-700001703
700001708-700001703	SHEATH 344	BL	BR	<->	SHEATH 346	YL	BR	700003461-700001703
700001709-700001703	SHEATH 344	BL	SL	<->	SHEATH 346	YL	SL	700003462-700001703
700001710-700001703	SHEATH 344	BL	WH	<->	SHEATH 346	YL	WH	700003463-700001703
700001711-700001703	SHEATH 344	BL	BK	<->	SHEATH 346	YL	BK	700003464-700001703
700001712-700001703	SHEATH 344	BL	RD	<->	SHEATH 346	YL	RD	700003465-700001703

Coordinate Systems and Re-projection

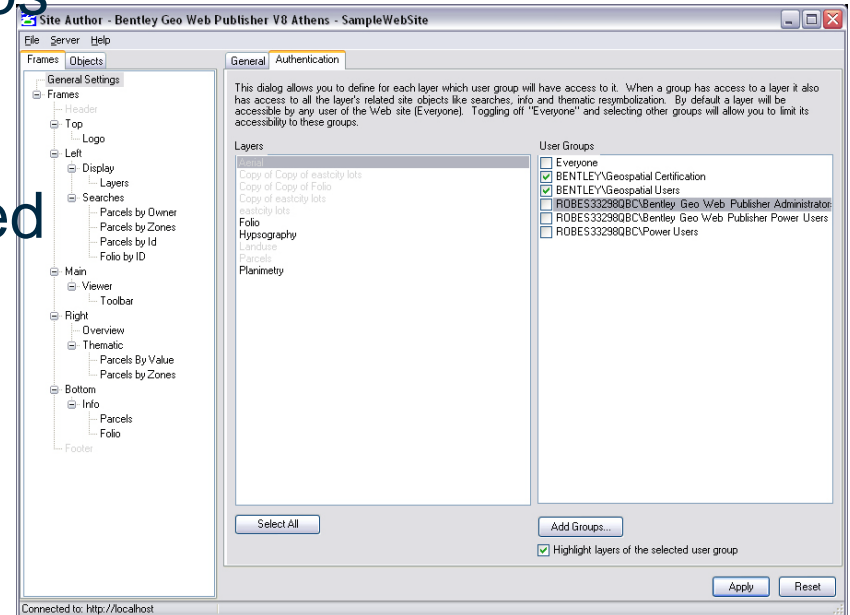
The image displays three overlapping windows from the Bentley Geo Web Publisher V8i software. The background window is the 'Administration' console, showing a tree view of 'Coordinate Systems' and a 'Library' of various projections like EPSG:26910 and WPL184. The middle window is the 'Coordinate System' configuration dialog, showing fields for Name, Description, Projection, Units, and Datum. The foreground window is the 'Map Author' interface, showing a map titled 'Whistler' with various layers like Logo, North Arrow, and Landmark. The 'General' tab in the Map Author window shows the following settings:

- Id:** 2fe1933d-79b3-47b7-9f33-b789fd432fa
- Name:** Whistler
- Description:** Sample map
- Schema Version:** 1.3
- Coordinate System:** EPSG:26910
- Map Unit:** Meter
- Display Units:** Primary Unit: m, Secondary Unit: km
- Pixel Size (meters):** 0.00028
- Rotation Angle (degrees):** 0
- Background Color:** [White]

A small map preview in the Map Author window shows a distance of 887.60 m and a total of 809.43 m. The status bar at the bottom indicates 'The server is not running' and 'Connected to: http://localhost'.

Authorization/Authentication

- Works with Active Directory and regular Windows groups
- Single sign-on
- Users see layers/data based on their credentials



Floating Frames

The screenshot displays the Geo Web Publisher interface. At the top, the title bar reads "Geo Web Publisher" and "Geo Web Publisher". Below the title bar, there are navigation tabs: "Home", "Thematic", and "Redline". The Bentley logo is visible in the top right corner of the header area.

The main interface is divided into several sections:

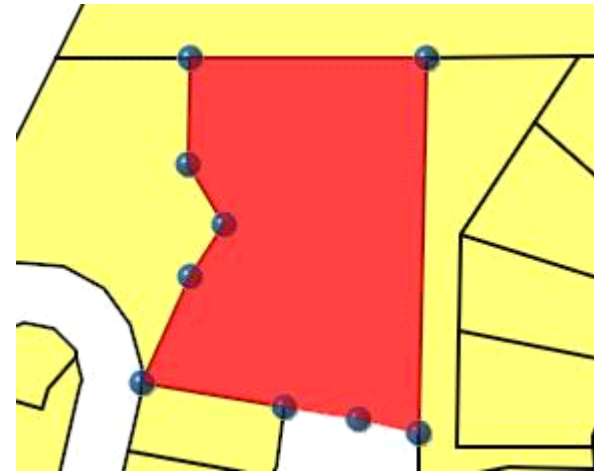
- Map Layers:** A floating frame containing a list of map layers with checkboxes:
 - Aerial
 - Landmark
 - Folio
 - Parcel
 - Hypsography
 - Planimetry
 - Landuse
- Searches:** A section with a dropdown menu labeled "Select" and a "Clear Symbols" button.
- Map:** The central area shows a map with green parcels and a red parcel. A scale bar indicates 100 m. The map's status bar shows "Update info", "1:6248", and "1390 x 941 (m)".
- Reports:** A floating frame displaying a table of parcel data. The table has columns: "Zoom to", "Last Name", "Derivate Value", "Area", "Perimeter", "Roll Number", "Zone", and "ID".

Zoom to	Last Name	Derivate Value	Area	Perimeter	Roll Number	Zone	ID
<input type="checkbox"/>	AASE	\$ 492660	782 m2	112.357617 m	#006539.545	RS-1	2273
<input type="checkbox"/>	BENNETT	\$ 425880	676 m2	113.171552 m	#006539.577	RS-1	2288
<input type="checkbox"/>	BIERNOFF	\$ 378000	600 m2	100.839837 m	#006539.533	RS-1	2265
<input type="checkbox"/>	BREWSTER	\$ 669690	1063 m2	268.174838 m	#006539.415	RS-1	2349
<input type="checkbox"/>	BUCKMAN	\$ 730170	1159 m2	159.669285 m	#006539.563	RS-1	2328
<input type="checkbox"/>	BURRESS	\$ 870660	1382 m2	183.844989 m	#006539.597	RS-1	2278

At the bottom of the Reports frame, there is a "Show all results" button and a "Number of records: 38" indicator.

Redlining

- GWPC Redlining
 - Line, polygon, text
 - Color, transparency, font
 - Saved as DGN file format
 - Loaded on the MapViewer
- Database Redlining
 - Oracle Locator/Spatial
 - ODBC/spatial (simple database point feature)
 - Graphical data and properties
 - Dynamic editing
 - List of values



OWNER_LAST	Resort Municipality of Whis
ROLL_NO	500809.042
ZONING	Commercial

Submit Cancel



What's Coming

*Bentley Geo Web Publisher
for Communications V8i
SELECTseries 1*

New Features

- Custom attributes
- Load coils
- Loop makeup



Loop Makeup Detail

Wire Center: PH-COP-1

Serving Terminal IPID:

Temperature: 90 / 120 deg. Fahr.

Address: cable 01902162

Count: 381, 1-600

Main Loop

IPID	Source IPID	Material Description	Count	Env	Length Gauge	Loading	Cumulative Length	Resistance 1.0k Hz
TL-9-34020014 0		C.O.	381,1-600				0	0.00 0.00
01902162	TL-9-34020014	SP 1212-24	381,1-600	U	89	24	89	0.00 0.00
01902337	01902162	9.5"x28.5"	381,1-600			BT1-FS	89	0.00 0.00

Bridge Tap 1 - Field Side Connects to Main Loop

IPID	Source IPID	Material Description	Count	Env	Length Gauge	Loading	Cumulative Length	Distance From CO
01902349	01902337	AE 600-26	381,1-600	U	30	26	30	119
01902349	01902340	0.5"x28.5"	381,1-600			BT2-BT3	30	119

Bentley Geo Web Publisher Features

- Multi-coordinate systems publishing
- Pie chart thematic mapping
- Property editing
- New development tools
- Google Earth publishing
- End-user tools

