



Bentley® Facilities V8i

A Comprehensive Solution for the Requirements of Today's Facility Managers in Area, Asset and Document Management

Bentley Facilities V8i is the Bentley product family for facility and asset management based on Bentley's MicroStation V8i graphics platform and ProjectWise document management system.



Enterprise Facilities Manager enables users to publish data on the Internet.



Facilities Manager is a powerful interface for authoring and maintaining information.



Facilities Web Reports creates and executes data using a Web browser.

Improves Efficiency

Bentley Facilities Space Planner allows quick and easy access to information on the location and state of space and assets. Bentley Facilities Space Planner combines the graphical power of MicroStation with the robust engineering document management capabilities of ProjectWise to create a seamless, unified collection of plan-based, document-based and database-based information.

Using Bentley Facilities Space Planner, facility management staff at owner-operators and FM service providers can capture and structure all new and existing information in the document and asset management database. Users selectively add intelligence to allow drill down and use navi-

gation, and query tools to retrieve, display and distribute information. Bentley Facilities Space Planner is an efficient way to extend the use of existing design and operations information and provide accurate, up-to-date data to optimize facility operations.

Increases the Value of AEC Content

Enterprise Facilities Manager is a powerful collaboration server that enables users to publish all facilities and asset-related data on the Internet. Enterprise Facilities Manager helps users increase the value of AEC content by providing review and reporting access to Bentley Facilities Management data sources. Users gain the ability to query and review, as well as locate alphanumeric data and graphical data.

Enterprise Facilities Manager is a key module in Bentley's overall facilities solution to help companies leverage information by creating an environment where documents, engineering and asset information are available to the global enterprise via a Web browser. Enterprise Facilities Manager forms the basis for a suite of optional modules focused on specific workflows within facilities management, including Move Management, Maintenance Management, Lease Management and Fire and Security Management.

Reduces Software Investment

Facilities Web Reports enables the creation and execution of reports on all relevant data by using a Web browser. Facilities Web Reports uses a powerful Report Server with Load Balancing functionality to enable the handling of large inquiry volumes. Users can access data efficiently and easily by means of the integrated Dashboard functionality. Pre-defined reports can be automatically executed by saving an execution plan or by event control and filed as a report view in the Report portal/Dashboard, and distributed by email or printed. Reports can be output in various file formats such as PDF and Microsoft Excel. In order to operate specific ad hoc inquiries easily and quickly, Facilities Web Reports contains a special tool to enable the compilation of the required information very easily using Drag and Drop.

Enterprise Facilities Manager is the ideal tool for users who need to access, report and initiate change via a Web interface.

gation, and query tools to retrieve, display and distribute information. Bentley Facilities Space Planner is an efficient way to extend the use of existing design and operations information and provide accurate, up-to-date data to optimize facility operations.

Quick Information Access

Bentley Facilities Manager is a powerful Windows interface for authoring and maintaining all facilities-related information. Using the navigation options, query functions, and reporting facilities, users can find all information quickly and efficiently.

Whether used on its own or to complement implementations of Facilities Space Planner, Facilities

System Requirements

Facilities Space Planner

Operating System

Windows XP SP2 or higher,
Windows Vista (32 bit), Windows 7
(32 bit and 64 bit)

Other Software

MicroStation V8i or MicroStation
PowerDraft V8i, ProjectWise V8i

Working Memory

2GB recommended

Hard Drive Storage

1GB free hard drive storage minimum

Facility Manager

Operating System

Windows Server 2003 SP2 or higher
(32 bit), Windows Server 2008 (32 bit),
Windows Server 2008 R2 (64 bit)

Memory

4GB recommended

Hard Drive Storage

1 GB free hard-drive storage minimum

Web Server

Internet Information Server (IIS) 6.0
(with Windows Server 2003), Internet
Information Server (IIS) 7.0 (with
Windows Server 2008)

Enterprise Facilities Manager

Operating System

Windows Server 2003 SP2 or higher

Memory

4GB recommended

Hard Drive Storage

1 GB free hard-drive storage minimum

Web Server

Internet Information Server (IIS)
6.0 Internet Information Server (IIS)
6.0 or higher, Microsoft® .NET
Framework 4.0

Other Software

ProjectWise Integration Server V8i

Database

Microsoft SQL Server 2008,
Microsoft SQL Server 2005 SP2,
Microsoft SQL Server 2000 SP4,
Oracle Database 11g, Oracle
Database 10g (10.0.2.0.2 minimum)

Find out about Bentley
at: www.bentley.com

Contact Bentley

1-800-BENTLEY (1-800-236-8539)
Outside the US +1 610-458-5000

Global Office Listings

www.bentley.com/contact

Bentley Facilities V8i At-A-Glance

General

- Includes flexible multi-language data model
- Enables access management
- Provides export for external processing or archiving

Information Organization

- Utilize location and organization hierarchies
- Ability to record areas and fixed assets
- Use optional defined hierarchies for cost centers or networks, for example
- Display simple or mixed hierarchies

Integrated Document Management System

- Links area and asset documentation to the objects in Bentley Facilities
- Displays old data in its original format
- Provides controlled access to information

Output in a Large Variety of Formats

- Asset display as necessary from the information on the server
- Display filters control the display in different detail levels in 2D or 3D

- Reports can be created by "Drag" and "Drop"
- Graphics reports in the form of filled areas based on attributes

Variants and Versions

- Enables accurate inquiries and reports based on daily occurrences and changes in the actual status or other variants
- Transfers variants to actual status

Area Classification

- Area classification based on coding and specification
- Regional (DIN) or industrial (BOMA) standards for area usage
- Configuration option to extend the classification to include corporate standards

Area Calculation

- Enables automatic calculation of net and gross areas from DGN- or DWG-based building plans
- Utilizes deductible areas
- Overlap check
- Enables automatic floor and building allocation
- Enables automatic re-calculation after addition, removal or modification of areas

Relocation Assistant

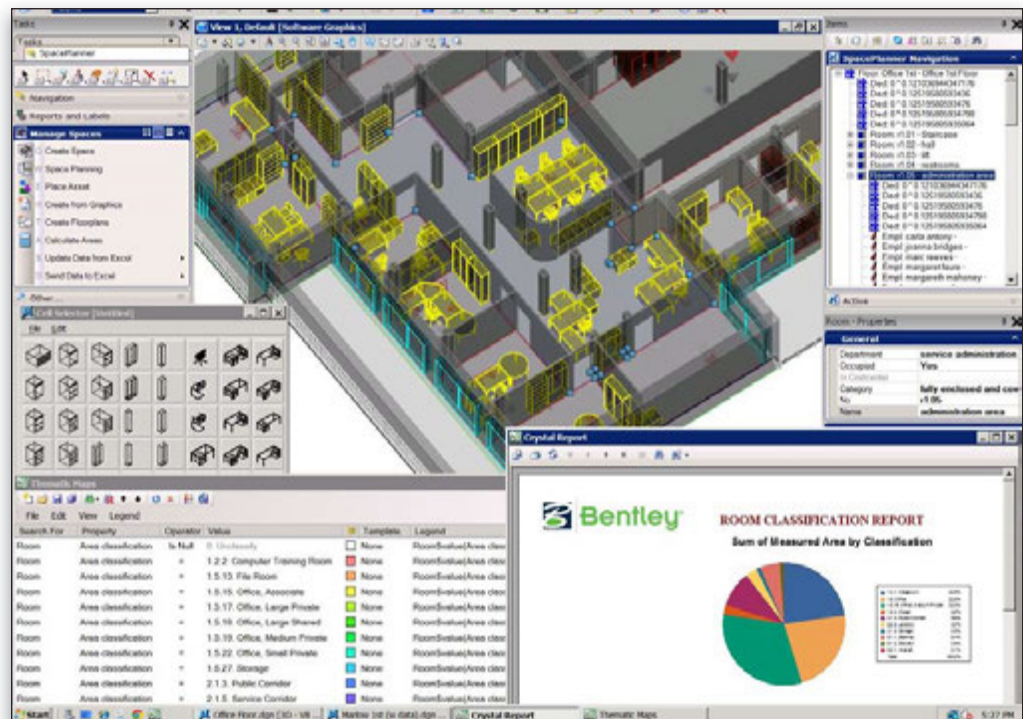
- Non-graphic relocations beyond data limits
- Visual displacement in drawing
- Bundling of several objects to be relocated into a container
- Automatic allocation to new space

Object Search

- Search in database for individual objects
- Utilize graphic object attributes inquiry
- Create, search, and display of hit lists
- Localize search results in the drawing
- Highlight search results in the floor plan
- Use hierarchical searches

Analysis and Reporting

- Create complex reports
- Retrieve prepared reports
- Create ad hoc reports
- Graphic analysis of search results
- Execute time- and event-controlled reports
- Output in different formats such as PDF and Excel
- Display in table or a large variety of diagram formats



Facilities Space Planner enables quick and easy access to information.