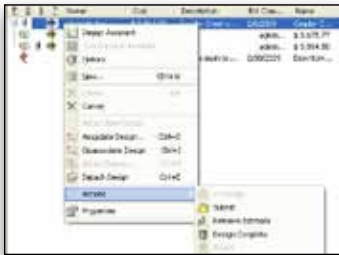




Bentley® Expert Designer Gas V8i

Streamlined, Intelligent Distribution Design for Gas Utilities

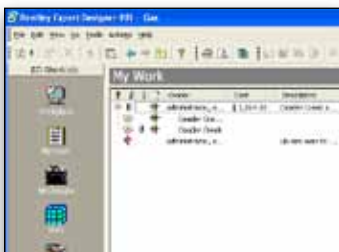
Bentley Expert Designer Gas merges network design and work management into a single environment, to improve distribution design efficiency. It employs a GIS- and WMS-independent architecture so enterprises can easily integrate it into existing work environments.



Bentley Expert Designer Gas offers a fully configurable workflow engine. Even complex workflows can be easily managed by the product.



Take advantage of the productivity achieved through on-the-fly calculations and cost estimates.



Create new design versions and compare the cost of constructing each version.

A Comprehensive Utility Design Offering

Bentley Expert Designer Gas is a complete offering that integrates network modeling, standards-based design, and detailed asset and cost data. The software interoperates transparently with various GIS platforms to provide designers with unique decision-support tools that facilitate optimal decisions and help users avoid rework. On-the-fly calculations and cost estimates let users know the cost of each component when added to the design. Bentley Expert Designer Gas eliminates time-consuming iterations between design and work management systems and closes the gap between design, estimating, and mapping. Users can create new design versions and compare the cost of constructing each version. Managers and supervisors can easily compare options and verify that alternatives have been evaluated and a least-cost design, fitting all requirements, has been submitted for review and approval. This accelerates project approval through simulation and comparison of options.

Automatic Compatible Unit Assignment

Bentley Expert Designer Gas automatically assigns compatible units. Through a system that maps equipment and installation characteristics to standard units, the product knows exactly what units are required as soon as designers draw facilities. Many utilities use a mix of labor types to construct new designs. Utilities with large territories may have multiple union contracts or a number of contractor options. Bentley Expert Designer Gas helps them make the best decisions and lower costs by evaluating the costs associated with different labor options.

Seamless Integration with Bentley® Gas and Configurable Workflows

The distinctive inference technology in Bentley Gas raises the bar for ease of use and user productivity, which is maximized through repeatable workflows and a streamlined drawing process that minimizes the number of clicks from a tabular user interface or a Bentley Gas GIS view. With Bentley Expert Designer Gas, users drag and drop features into their designs

using a convenient, dockable catalog. Job defaults ensure rules of thumb for design are followed. The approach guarantees standardization by ensuring designers follow guidelines. Bentley Expert Designer Gas offers a fully configurable workflow engine, and even complex workflows can be easily managed.

Support for Work Management and Asset Management Solutions

Standard message-based interfaces are implemented quickly, saving costly development time while reducing the risk of budget and schedule overruns.

System Requirements

Processor:

Intel or AMD processor 3.0 GHz or greater

Operating System:

Windows 7, Windows 7 x 64, Windows Vista, Windows Vista x64, Windows XP Professional SP2 or later, Windows XP Professional x64, Windows XP Tablet PC Edition, Windows Server 2003 SP1 or later, Windows Server 2003 x64

Prerequisite Software:

MicroStation

Prerequisite Application:

Oracle Database 11g Release 1 Client, Oracle 11g Release 1 Server, or Oracle Database 10g Release 2 Server, or Oracle Database 9i Release 2 Server

Web Browser:

Microsoft Internet Explorer 6.0 or greater with 128-bit cipher strength

RAM:

512 MB minimum, 2 GB RAM recommended. More memory typically results in better performance with large models

Hard Disk:

1 GB free disk space

Display:

Graphics card supported by DirectX 9.0. See graphics card manufacturer for latest information on DirectX drivers

Find out about Bentley at: www.bentley.com

Contact Bentley

1-800-BENTLEY (1-800-236-8539)
Outside the US +1 610-458-5000

Global Office Listings

www.bentley.com/contact

Bentley Expert Designer Gas At-A-Glance

Comprehensive Utility Network Design

- Organizes and checks facility data according to industry construction standards and company-defined business practices
- Interfaces with work management systems to streamline the process of managing projects from inception to completion
- Operates on multiple GIS platforms, providing flexibility without sacrificing functionality or consistency
- Integrates fully with Bentley Gas, which includes all the functionality of Bentley Map®
- Creates designs online (within a GIS) or offline (outside a GIS) in several formats
- Assigns compatible units to features automatically
- Compares the costs of multiple designs easily
- Generates bills of materials, cost estimates, and other reports

Open Architecture

- Operates on various geospatial platforms, including field data-capture systems, without sacrificing functionality
- Deploys easily with legacy systems as well as third-party business solutions across the enterprise
- Adheres to Open GIS Interoperability Specification (OGC) standards

Workload Management

- Workplace Today, a powerful and configurable data organizer, provides intuitive lists for the user's pending, past-due, and in-progress work, and can also be tailored to the user's preferences

Drag-and-Drop Placement

- Provides handy catalogs of features and units (macro, compatible, and material)
- Lets users select a feature from the catalog and drag it to the desired work location, including the path level
- Adds the selected feature automatically when the resulting configuration complies with the current business rules

Dynamic Cost Estimates

- Provides real-time cost estimates for a design as it is created
- Calculates and displays continuously the estimated cost of all labor, materials, and equipment at each work location and for the entire design
- Provides instant detailed cost breakdowns via integrated report generation using Seagate Crystal Reports

Built-In Data Model

- Provides a built-in framework for organizing and manipulating data structures that utilities use most often in modeling their networks
- Modifies easily to fit an organization's business processes

Integrated Work Management

- Manages work requests and designs in either a stand-alone mode or in combination with a work management system (WMS)
- Provides seamless integration with an external WMS
- Supports the most widely used WMS products on the market today
- Keeps track of the lifecycle status and scheduled due date of every job as it progresses from initiation through completion

Offline Format

- Provides design capabilities while working in the field without a network connection
- Transfers offline facilities into the geospatial system when pointing to their locations
- Lets users switch back and forth between offline and geospatial formats as often as needed

Automated Layout

- Offers a comprehensive set of configurable tools for laying out features quickly, efficiently, and consistently
- Employs powerful placement logic based on mapping and construction standards as well as user-defined business rules

Construction Unit Defaults

- Supports unit data in the form of macro units, compatible units, and material units and offers a number of options for assigning units to the work locations of a design
- Enables users to accept the default unit that the organization has set up for the selected feature, or lets them replace it with another standard unit

Standard and Custom Reporting

- Generates a wide variety of standard reports: cost estimates, cost comparisons, as-built comparisons, plant account reports, bills of materials (both major and minor), and design orders
- Compiles reports using Seagate Crystal Reports; templates can be easily customized, and information can be accessed with any Open Database Connectivity (ODBC) reporting tool