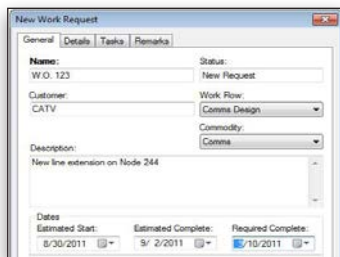


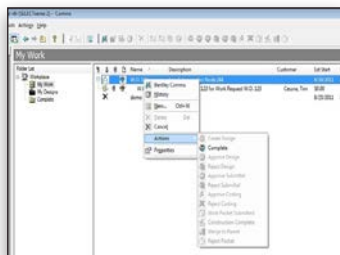
Bentley Expert Designer Communications V8i (SELECTseries 3)

Streamlined, Intelligent Network Design for Communications Service Providers

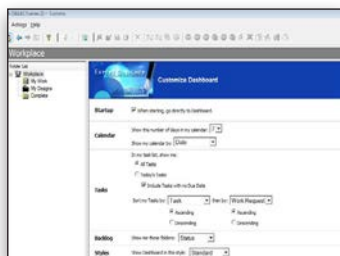
Bentley Expert Designer Communications improves the efficiency and throughput of infrastructure design by merging network design and work management in a single environment. It employs an architecture that is GIS and work management system (WMS) independent, allowing enterprises to easily integrate it into existing work environments.



New work requests are simple to enter into Bentley Expert Designer Communications.



Tasks generated in a work management system flow through to the designer's work list automatically and administrators can easily review the state of any task.



The task dashboard is fully customizable.

Powerful Functionality to Ensure Streamlined Design Workflows

Bentley Expert Designer Communications includes sophisticated functionality for work order management, job closeout, disconnected contractor workflows, and process measurement and tracking. It interfaces with a variety of WMSs to streamline the process of managing projects from inception to completion.

Bentley Expert Designer Communications enables designers and their supervisors to monitor and fulfill work requests. All parties in a workflow are automatically notified of any status change of a request, giving everyone notice not only of today's work, but also of future and past-due work. The software integrates seamlessly with Bentley Communications products and comes complete with three preconfigured workflows that can be modified by the user to meet organizational requirements.

The software integrates seamlessly with Bentley's communications network design products and comes complete with three preconfigured workflows.

Seamless Integration with Bentley Communications Products for High Productivity

Work requests can be generated with Bentley Expert Designer Communications or created and assigned via integration with third-party WMSs. After a work request has been created, the integration of Bentley Expert Designer Communications with the Oracle Workspace Manager allows a named, long

transaction workspace to be created. As soon as this has been done, Bentley Communications is launched from the Bentley Expert Designer Communications interface and connected to the new workspace.

Contractors Empowered by Support for Disconnected Workflows

New to Bentley Expert Designer Communications is support for disconnected contractor workflows when VPN access to the engineering documentation server is not permitted. Locked and assigned features in the Oracle workspace can be exported for editing by contractors and re-imported when projects are completed.

Configurable Business Workflow for Optimal Flexibility

Bentley Expert Designer Communications offers a fully configurable workflow engine. In addition, it can easily manage even complex workflows.

Support for Work Management and Asset Management Solutions Speeds Job Throughput

Standard message-based interfaces are implemented quickly. This saves costly development time while reducing overall risks of budget and schedule overruns.

Automatically Generate Detailed Audit Trails for Management Reports

User actions, including reviews and approvals, are captured and can be later reviewed for audit purposes. Historical information such as the user, date, and time is recorded as a design or project transitions between the various stages of a work request.

System Requirements

SERVER

Processor

Intel Pentium or AMD processor
3.0 GHz or greater. Dual-core or
multiple-processor architecture
is strongly recommended.

RAM

3 GB minimum; more memory will
typically improve performance.

Hard Disk

3 GB minimum free disk space

*(Note: Project size affects required hard disk space.
An estimated 1GB free disk space is needed
for every 350 miles of plant.)*

Operating Systems

Windows 2008 Server SP2 (64-bit)

Windows 2003 Server SP1
(32-bit and 64-bit)

Database

Oracle Database 11g Release 2 (32-bit
and 64-bit)

WORKSTATION

Processor

Intel Pentium or AMD processor
3.0 GHz or greater. Dual-core or
multiple-processor architecture
is strongly recommended.

*(Note: MicroStation V8i (SELECTseries 2)
requires a CPU that supports SSE2)*

RAM

2 GB minimum, more memory will
typically improve performance.

Hard Disk: 2 GB minimum
free hard disk space

Operating Systems

Windows 7 (32-bit and 64-bit)

Windows Vista (32-bit and 64-bit)

Windows XP Professional
(32-bit and 64-bit)

Database

Oracle Database 11g Release 2 Client
32-bit (Standard Edition)

Find out about Bentley
at: www.bentley.com

Contact Bentley

1-800-BENTLEY (1-800-236-8539)
Outside the US +1 610-458-5000

Global Office Listings

www.bentley.com/contact

Bentley Expert Designer Communications At-A-Glance

Comprehensive Communications Network Design

- Interfaces with WMS to streamline the process of managing projects from inception to completion
- Retrieves and submits work requests in batch mode or as scheduled events
- Allows users to modify the work details of a design to allow for costs and descriptions of each work request created

Workload Management

- Uses Workplace Today, a powerful and configurable data organizer that can be tailored to the user's preferences to provide intuitive lists for pending, past-due, and in-progress work

- Tracks the timelines of each project and shows which ones need attention
- Calculates the duration of each project and stores notes about project details

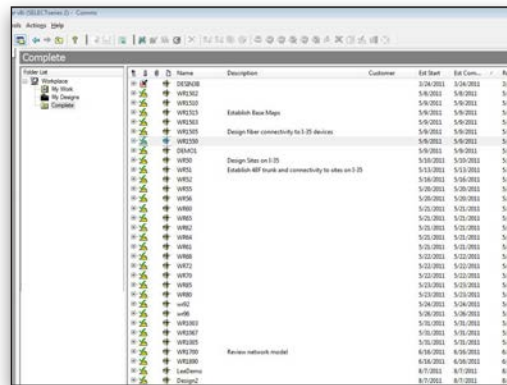
Intuitive Interface

- Adheres fully to Windows application standards
- Lets users customize the way information is displayed as well as the toolbars, shortcuts, and other navigational tools

Integrated Work Management

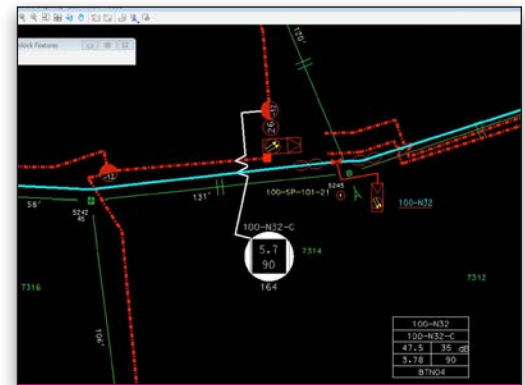
- Manages work requests and designs in either a stand-alone mode or in combination with users' WMS Provides seamless integration with an external WMS
- Supports the most widely used WMS products on the market

- Keeps track of the lifecycle status and scheduled due date of every job as it progresses from initiation through completion
- Treats work requests and designs as discrete data sets and stores them in separate folders
- Provides access to rendered drawings from the work request
- Helps users find information faster and organize it in different ways for viewing—by due date, project type, work request name, customer name, and more
- Deploys easily with legacy business solutions across the enterprise



Task ID	Name	Description	Customer	Est. Start	Est. Com.	Req.
VER001	VER001	Design		5/10/2011	5/10/2011	5/10
VER002	VER002	Design		5/10/2011	5/10/2011	5/10
VER003	VER003	Design		5/10/2011	5/10/2011	5/10
VER004	VER004	Design		5/10/2011	5/10/2011	5/10
VER005	VER005	Design		5/10/2011	5/10/2011	5/10
VER006	VER006	Design		5/10/2011	5/10/2011	5/10
VER007	VER007	Design		5/10/2011	5/10/2011	5/10
VER008	VER008	Design		5/10/2011	5/10/2011	5/10
VER009	VER009	Design		5/10/2011	5/10/2011	5/10
VER010	VER010	Design		5/10/2011	5/10/2011	5/10
VER011	VER011	Design		5/10/2011	5/10/2011	5/10
VER012	VER012	Design		5/10/2011	5/10/2011	5/10
VER013	VER013	Design		5/10/2011	5/10/2011	5/10
VER014	VER014	Design		5/10/2011	5/10/2011	5/10
VER015	VER015	Design		5/10/2011	5/10/2011	5/10
VER016	VER016	Design		5/10/2011	5/10/2011	5/10
VER017	VER017	Design		5/10/2011	5/10/2011	5/10
VER018	VER018	Design		5/10/2011	5/10/2011	5/10
VER019	VER019	Design		5/10/2011	5/10/2011	5/10
VER020	VER020	Design		5/10/2011	5/10/2011	5/10
VER021	VER021	Design		5/10/2011	5/10/2011	5/10
VER022	VER022	Design		5/10/2011	5/10/2011	5/10
VER023	VER023	Design		5/10/2011	5/10/2011	5/10
VER024	VER024	Design		5/10/2011	5/10/2011	5/10
VER025	VER025	Design		5/10/2011	5/10/2011	5/10
VER026	VER026	Design		5/10/2011	5/10/2011	5/10
VER027	VER027	Design		5/10/2011	5/10/2011	5/10
VER028	VER028	Design		5/10/2011	5/10/2011	5/10
VER029	VER029	Design		5/10/2011	5/10/2011	5/10
VER030	VER030	Design		5/10/2011	5/10/2011	5/10
VER031	VER031	Design		5/10/2011	5/10/2011	5/10
VER032	VER032	Design		5/10/2011	5/10/2011	5/10
VER033	VER033	Design		5/10/2011	5/10/2011	5/10
VER034	VER034	Design		5/10/2011	5/10/2011	5/10
VER035	VER035	Design		5/10/2011	5/10/2011	5/10
VER036	VER036	Design		5/10/2011	5/10/2011	5/10
VER037	VER037	Design		5/10/2011	5/10/2011	5/10
VER038	VER038	Design		5/10/2011	5/10/2011	5/10
VER039	VER039	Design		5/10/2011	5/10/2011	5/10
VER040	VER040	Design		5/10/2011	5/10/2011	5/10
VER041	VER041	Design		5/10/2011	5/10/2011	5/10
VER042	VER042	Design		5/10/2011	5/10/2011	5/10

Completed tasks are easily available for review.



Once the Bentley Expert Designer Communications interface is configured, designers can immediately begin to execute their tasks in the relevant Bentley Communications application.