

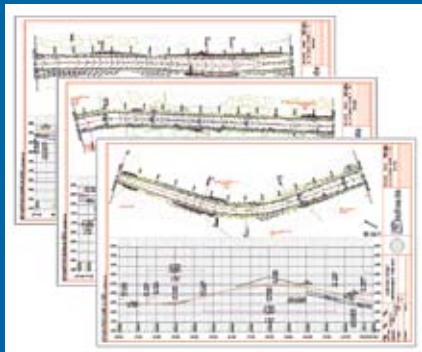
# PROJECTWISE<sup>®</sup> INTERPLOT™ DRIVER PACKS

FULL-FEATURED PRINTER DRIVERS FOR PLOTTING AEC CONTENT TO LARGE-FORMAT PRINTERS

Bentley offers a variety of Microsoft Windows printer drivers for printing to the most popular wide-format printers—including those manufactured by Hewlett-Packard, KIP, Océ, RICOH, and Xerox—and for creating files in industry-standard raster formats like TIFF, JPEG and CALS. ProjectWise InterPlot Drivers are completely integrated with the Microsoft Windows printing system and can easily be added to your existing plotting workflow.



*Plot high-density images.*



*Enables efficient production plotting.*

ProjectWise InterPlot Driver Packs are stand-alone solutions specifically developed for printing complex engineering drawings and high-density raster files, providing you with options to create an efficient, enterprise-wide printing solution.

#### **Integration with the Windows Print System**

With ProjectWise InterPlot Driver Packs, you can extend the use of engineering-only printing devices to print and plot from non-engineering applications throughout your organization. You can print from any application that uses the standard Windows printing system. Plus, since ProjectWise InterPlot Driver Packs install directly into the easy-to-use Microsoft Print Manager utility, any PC running Microsoft Windows on the network can print items such as project schedule charts, spreadsheets and word processing documents to the plotter—exactly as it would to a standard office printer.

#### **Enhanced Printer Controls**

ProjectWise InterPlot Driver Packs offer convenience across a wide range of devices, regardless of the manufacturer, to access advanced features. Intuitive features lower the learning curve while increasing productivity with a set of advanced document property settings that control print behavior.

*ProjectWise InterPlot Driver Packs offer convenience across a wide range of devices, regardless of the manufacturer, to access advanced features.*

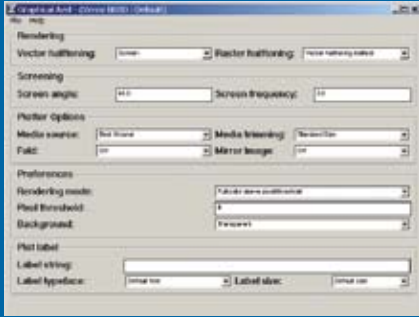
#### **Simplified Packaging**

ProjectWise InterPlot Driver Packs consolidate drivers for similar printers based on their quality and capacity. Driver pack updates, including new drivers for the same class, are provided to Bentley SELECT subscribers at no charge.

#### **Automatic File Creation and Naming**

True automated offline file creation can be achieved with the ProjectWise InterPlot Raster Offline Driver Pack. Its batch port monitor utility allows offline files to be automatically written to a specified directory using a defined naming convention, without having to key in a directory location or filename at plot time—saving valuable time in your batch plotting workflow.

## PROJECTWISE INTERPLOT DRIVER PACKS AT-A-GLANCE



Full control of printer properties.



Support for the most popular printers.

### PROJECTWISE INTERPLOT DRIVER PACKS SYSTEM REQUIREMENTS

- Processor:  
Intel Pentium-based or AMD Athlon-based PC or workstation
- Operating System:  
Microsoft Windows 2000 Server or Windows Server 2003
- Memory:  
512MB RAM minimum, 1 GB recommended
- Disk Space:  
5MB disk space for each driver pack, plus additional disk space for spooling plots
- Input Device:  
Windows pointing device

### Choice of Driver Packs to Meet Your Plotting Needs

- ProjectWise InterPlot Driver Pack
  - Gestetner A045
  - HP DesignJet 500, 800 Series
  - HP DesignJet 1050C, 1055CM
  - HP DesignJet 2000CP, 2500CP, 3000CP, 3500CP
  - HP DesignJet 4000, 4500
  - HP DesignJet 5000, 5500
  - HP DesignJet T1100
  - HP DesignJet Z2100
  - HP DesignJet Z6100
  - LANIER LW310
  - nashuatec A045
  - Océ 9300 and 9400-II
  - Océ TCS 400 and 500
  - Océ TDS 400
  - Rex-Rotary A045
  - RICOH Aficio 240W
  - Savin 2400WD
  - Xerox 8825
  - Generic PCL/5 Color & Mono Printers
- ProjectWise InterPlot Mid-Volume Driver Pack
  - Gestetner A070, and A080
  - KIP StarPrint 1230, 2000, 4000, 5000, 8000\*
  - LANIER LW410 and LW411
  - nashuatec A070 and A080
  - NRG A080
  - Océ 9600
  - Océ TDS 600 and 700
  - Rex-Rotary A070 and A080
  - RICOH Aficio 470W and 480W
  - Savin 4700WD and 4800WD
  - Xerox 510p
  - Xerox 8830

- ProjectWise InterPlot High Volume Driver Pack
  - Océ 9700 and 9800
  - Océ TDS 800

- ProjectWise InterPlot Raster Offline Driver Pack
  - Mono formats: TIFF G3, TIFF G4, CALS G4, BMP, PCX and Intergraph types 9 and 24
  - Color formats: TIFF, JPEG, BMP, Targa, PCX, and Intergraph types 10, 27, 28 and 29

### Reliability

- Server memory utilization for optimal processing of high-density images
- Transparent and translucent raster support
- Customized error handling behavior

### Advanced Document Properties

- Quality options
- Media selection
- Finishing options (stackers and folders)
- Associated device options with paper sizes (forms)
- Plot labels (user, project name, time, date identification)

### Plot Tracking

- Error reporting
- Accounting – activity reporting
- Ability to export activity data into applications such as Microsoft Access or Microsoft Excel

\*Note that the ProjectWise InterPlot Mid-Volume Driver Pack supports KIP StarPrint devices in the United States and Canada only.

## ABOUT BENTLEY

Bentley Systems, Incorporated provides software for the lifecycle of the world's infrastructure. The company's comprehensive portfolio for the building, plant, civil, and geospatial verticals spans architecture, engineering, construction (AEC) and operations. With revenues now surpassing \$400 million annually, and more than 2400 colleagues globally, Bentley is the leading provider of AEC software to the Engineering News-Record Top Design Firms and major owner-operators, and was named the world's No. 2 provider of GIS/geospatial software solutions in a recent Daratech research study.

For more information, visit [www.bentley.com](http://www.bentley.com) or call 1-800-BENTLEY.

### BENTLEY OFFICES

Bentley Worldwide Headquarters  
Bentley Systems, Incorporated  
Exton, PA, USA  
+1 800 BENTLEY  
+1 610 458 5000

Bentley International Headquarters  
Bentley Systems Europe B.V.  
JC Hoofddorp  
THE NETHERLANDS  
+31 23 556 0560