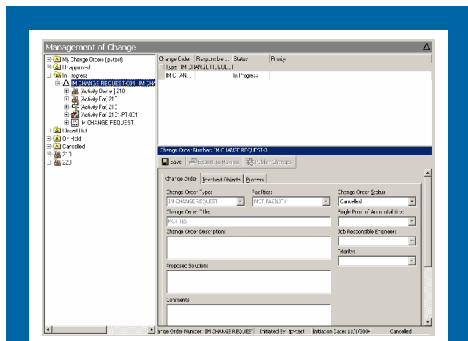


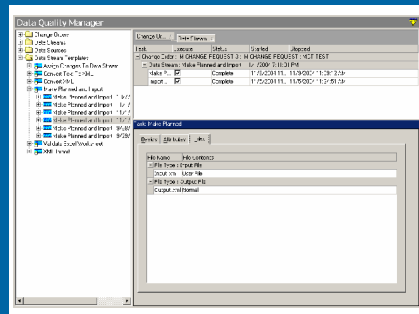
BENTLEY PROJECTWISE LIFECYCLE SERVER

CREATING REUSABLE INFORMATION ASSETS FOR THE BENTLEY DIGITALPLANT® SOLUTION

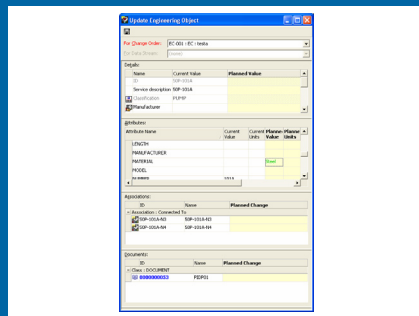
Bentley® Projectwise® Lifecycle Server™ is a standards-based engineering data warehouse with a supporting suite of software applications that address engineering automation and total lifecycle asset information management needs.



True Management of Change support allows you to view and approve changes to your facility before they are published.



The Data Quality Manager module provides a conduit for importing and analyzing data from any data source regardless of format.



Lifecycle Server provides a single source of truth for your entire facility.

Integrated, trusted data source

The consolidation and integration of data during handover is by far the toughest IT problem faced by the process industry today. Bentley ProjectWise Lifecycle Server is at the heart of Bentley's software suite that addresses this problem. Its core design principle is the identification and consolidation of data elements from disparate sources. As information is released from different disciplines, contractors, or vendors, Bentley ProjectWise Lifecycle Server provides comprehensive quality-checking methods to ensure that accepted information is complete, correct, and consistent. Context data about where information originated and the conditions under which it has been shared is held as well. Bentley ProjectWise Lifecycle Server offers a complete picture of the digital plant as it is being designed, as it is being built, and as it is being operated. Providing access to a trusted data source enables better, more cost-effective decisions for the entire life cycle of the process facility.

User-focused desktop and intuitive applications

Bentley ProjectWise Lifecycle Server solutions and services are focused on delivering powerful, user-friendly desktop and Internet applications that help users realize the potential of their data assets. The true value of a data asset can only be achieved if users can access it through intuitive applications that help them get their daily jobs done. Whether it is querying and reviewing data in the Facility Explorer, exchanging information with other applications through the Data Quality Manager, or reviewing proposed changes through the Management of Change module, Bentley ProjectWise Lifecycle Server has a user-friendly interface for the task at hand.

Industry Standards Support

Bentley ProjectWise Lifecycle Server is based on the principles of the EPISTLE (European Process Industries STEP Technical Liaison Executive) Generic Entity Framework for data models. As such, it relies on storing data in a highly normalized data model that is accompanied by a classification scheme or class library. With this foundation,

Bentley ProjectWise Lifecycle Server remains compatible with historic and evolving standards such as POSC/Caesar and ISO 15926 while insulating users from changes in the evolving standards world.

Flexible Architecture

Bentley ProjectWise Lifecycle Server architecture is designed to leverage existing technology such as XML and the SOAP/.NET platforms, and powerful database engines from Oracle and Microsoft, to deliver the most full-featured, cost-effective solution in the marketplace. Bentley ProjectWise Lifecycle Server is designed to meet the user's needs for performance, scalability, and extensibility.

Enabling Bentley's DigitalPlant Solution

Bentley is pioneering an effort to enable the process industry to capture the inherent value of information as it is created through the plant lifecycle, using

Bentley ProjectWise Lifecycle Server provides the central information asset management platform for all other applications in DigitalPlant.

a suite of software known as DigitalPlant. Bentley ProjectWise Lifecycle Server provides the central information asset management platform for all other applications in DigitalPlant.

Whether you are an engineering company interested in the automated flow of information from discipline to discipline in design, a prime management contractor tasked with gathering deliverables from subcontractors and vendors into a complete handover package, or an operator interested in change management integrated into maintenance and revamp activities, Bentley ProjectWise Lifecycle Server offers significant value in enabling your team to meet its goals.

BENTLEY PROJECTWISE LIFECYCLE SERVER SYSTEM REQUIREMENTS

Bentley ProjectWise Lifecycle Server (doubling as a DB Server)

- Hardware Requirements: 3 GHz processor Minimum of 2 GB of RAM (more recommended). 3 SCSI Hard Drives One for the OS and Software One for physical location of Oracle Data Table Space One for physical location of Oracle Index Table Space
- Software Requirements:
 - OS: Windows 2000 Server SP4 Windows 2000 Advanced Server SP4, or Windows Server 2003 Standard Edition, or Windows Server 2003 Enterprise Edition
 - Oracle 9 (9.2.0.7 Recommended) and Oracle 10 (10.2.0.3 Recommended) SQL Server 2005

Bentley ProjectWise Lifecycle Server (with a separate DB Server):

- Hardware Requirements : 3 GHz processor. Minimum of 1 GB of RAM. Disk Space of 4 GB
- Software Requirements :
- OS: Windows 2000 Server SP4, or Windows 2000 Advanced Server SP4 , or Windows Server 2003 Standard Edition, or Windows Server 2003 Enterprise Edition
- Oracle: Oracle Client with Oracle Call interface (Access to DB Server). Oracle SQL Plus installed and in system PATH

Bentley ProjectWise Lifecycle Server WWWServer (if different from Bentley ProjectWise Lifecycle Server - Server Component):

- Hardware Requirements: 2 GHz processor. Minimum of 1GB of RAM. Disk Space of 4 GB.
- Software Requirement:
 - OS: (same as earlier server). Windows 2000 Server SP4 with IIS 5.x or, Windows 2000 Advanced Server SP4 with IIS 5.x. Windows Server 2003 Standard Edition with IIS 6.x. Windows Server 2003 Enterprise Edition with IIS 6.x. Ability to Connect to COM+ package on the Bentley ProjectWise Lifecycle Server – Server Component

Note: If your Bentley ProjectWise Lifecycle Server is also doubling as Bentley ProjectWise Lifecycle Server WWW server, the OS requirements listed above (for IIS) will apply to that server.

Bentley ProjectWise Lifecycle Server Client :

- Hardware Requirements : 2 GHz processor, Minimum of 1GB of RAM Disk Space of 1 GB
- Software Requirements:
 - OS : Windows 2000, or Windows XP, Ability to connect to the MTS/COM+ package on Bentley ProjectWise Lifecycle Server

BENTLEY PROJECTWISE LIFECYCLE SERVER AT-A-GLANCE

System integration platform

- Tight integration with document management solutions including ProjectWise and Documentum
- Full XML import/export support for repeatable exchange of information with other systems
- Web-enabled data model for easy access to Internet resources
- Thorough integration with Bentley native applications

Flexible architecture

- Data definition through dynamic class library
- Attributes (metadata) managed through class library
- Extend class library with new equipment or object types on the fly
- Stable data base implementation that allows customization without recompilation of user interfaces
- Multi-tier client/server model allows for expansion and extension

Data quality control

- Built-in import/export engine
- Comprehensive task-based data-stream definitions for repeatable exchange needs
- Flexible control filters for quality analysis of incoming data

- Off-line data entry tool with built-in knowledge of system rules
- Class-based features for data template definition
- Context-based identification scheme for enabling consolidation from multiple sources
- Validation mechanisms for numbering schemes on an object class basis

Management of change

- Complete attribute-level change history tracking
- Segregation of proposed changes from current data
- Control publish of changes to the user community
- Configurable permissions and sign-off levels
- Visual and programmatic recognition of information under change
- History and change reporting on a per-object level
- Integrated into data exchange and other functional areas of Bentley ProjectWise Lifecycle Server

Expert services

- Industry experts available for long- or short-term service engagements
- QuickStart programs incorporating targeted training and kick-start implementation help

ABOUT BENTLEY

Bentley Systems, Incorporated provides software for the lifecycle of the world's infrastructure. The company's comprehensive portfolio for the building, plant, civil, and geospatial verticals spans architecture, engineering, construction (AEC) and operations. With revenues now surpassing \$400 million annually, and more than 2400 colleagues globally, Bentley is the leading provider of AEC software to the Engineering News-Record Top Design Firms and major owner-operators, and was named the world's No. 2 provider of GIS/geospatial software solutions in a recent Daratech research study.

For more information, visit www.bentley.com or call 1-800-BENTLEY.

BENTLEY OFFICES

Bentley Worldwide Headquarters

Bentley Systems, Incorporated
Exton, PA, USA
+1 800 BENTLEY
+1 610 458 5000

Bentley International Headquarters

Bentley Systems Europe B.V.
JC Hoofddorp
THE NETHERLANDS
+31 23 556 0560