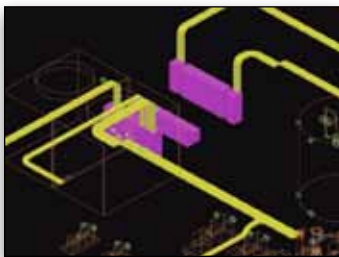




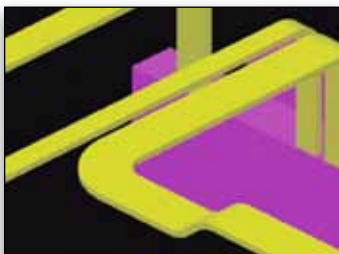
AutoPLANT® Raceways V8i

Model Electrical System Cable Tray and Conduit in a 3D Environment

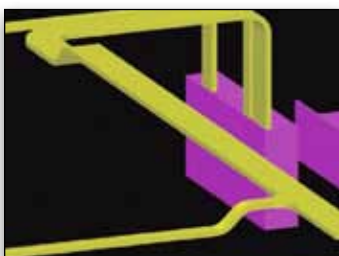
AutoPLANT Raceways V8i allows users to interactively model cable trays, conduits, instruments, and supports in a 3D building and plant design environment. These electrical system models are part of larger, multidisciplinary building or plant models used for design review, clash resolution, testing design alternatives, and construction.



The ability to model cable trays allows users to design a complete electrical raceway system.



Electrical system models can be used to create comprehensive, multidisciplinary plant models.



The software automatically places straight tray lengths and fittings along a SmartLine.

Work Simultaneously With Engineers in Other Disciplines

One component of the Bentley AutoPLANT 3D plant design products, AutoPLANT Raceways V8i enables users to work simultaneously with engineers in other disciplines, such as structural, piping, and HVAC. This facilitates the detection of interferences with pipe work, structural steel, or plant equipment. Locating and resolving possible interferences during the design phase saves many on-site man-hours, and prevents the particularly costly problem of having to re-route raceways as a result of clashes discovered in the construction phase. This also helps minimize material procurement overruns.

Placing Cable Trays, Conduit and Supports

The familiar AutoPLANT user interface makes placing and editing raceway components quick and convenient. Powerful layout tools allow users to route along a wall or relative to other components.

Spec-Driven Design

AutoPLANT Raceways provides sample database catalogs of tens of thousands of components from which manufacturer-specific specifications can be produced. The Spec Generator feature allows users to build and customize the database specifications used with particular projects or clients. Users can edit or modify the specifications to suit unique requirements, and create an unlimited amount of specifications in imperial, metric, and/or mixed-metric versions.

Meeting Project Needs Quickly

The flexibility of AutoPLANT Raceways provides users with options for placing numerous types of cable trays and conduit components—including those that are user defined. Suitable for the needs of small or complex projects, the software is easy to use and minimal training is required, allowing users to quickly get up to speed.

Design Review via i-model and Bentley Navigator

The AutoPLANT Raceways model can be added to a building or plant project model, and i-models can be generated for clash resolution and design review using Bentley Navigator.

An i-model is a container for information exchange that enables bidirectional feedback in dynamic workflows. i-models are information rich, reliable, and optimized for purpose. A key differentiator of i-models is “provenance,” which is knowledge of its origin and evolution – essentially its change history.

Project teams use Bentley Navigator to review and analyze project information. With highly versatile viewing capabilities, Bentley Navigator delivers a more intuitive user experience and improves the interactive quality of information. This enables greater project insight and helps avoid costly on-site errors. In addition, teams can analyze projects virtually — to detect and resolve clashes and to simulate project schedules — and augment data by registering comments in i-models. They also can produce 2D and 3D PDFs for use by a wider audience.

Export Reports to Microsoft Applications

AutoPLANT Raceways can automatically generate material take offs and other configurable reports using Crystal Reports®. Users can export reports to Microsoft Word, Excel, and Access as well as other database formats. The software can combine reports with plots and scheduling information to give team members access to accurate, up-to-date information at each project phase. They can then extract construction drawings and material lists directly from the model to start construction.

Recommended Configuration

Processor:

Intel Core i7, Intel Xeon or AMD Phenom, AMD Phenom II

Operating System:

Microsoft Windows 7 (32- or 64-bit) Enterprise, Ultimate or Professional Edition

Memory (RAM):

4 GB for 32-bit Windows 7, 8 GB (minimum) for 64-bit Windows 7

Graphics Card:

512 MB Microsoft Direct3D-capable workstation-class graphics card (minimum), 1 GB Microsoft Direct3D-capable workstation-class graphics card (recommended)

Disk Space:

2 GB available

Software:

- AutoCAD 2011 (32- or 64-bit)
- Microsoft Office 2010 Professional (32- or 64-bit)
- Microsoft SQL Server 2008 R2 Enterprise Edition

Find out about Bentley at: www.bentley.com

Contact Bentley

1-800-BENTLEY (1-800-236-8539)
Outside the US +1 610-458-5000

Global Office Listings

www.bentley.com/contact

AutoPLANT Raceways V8i At-A-Glance

3D Modeling and Design

- Produce intelligent, 3D production models of cable trays and conduit

Interference Detection

- Access Bentley Interference Manager at any point in the design process

Material Take-Offs (MTO)

- Generate material take-offs and other configurable reports automatically
- Compatible with standard office applications such as Microsoft Access

Spec-Driven Design

- Design conduit and cable tray according to the specific needs of the project using sample database catalogs of tens of thousands of components

- Use the Spec Generator program to build and customize the database specifications used with particular projects or clients
- Edit or modify any number of specifications to suit unique requirements

Schedule Simulation

- Interoperates with Bentley Navigator for visualization, schedule simulation, and dynamic animation
- Links model with scheduling and construction databases or any ODBC-compliant information

Material Take Offs

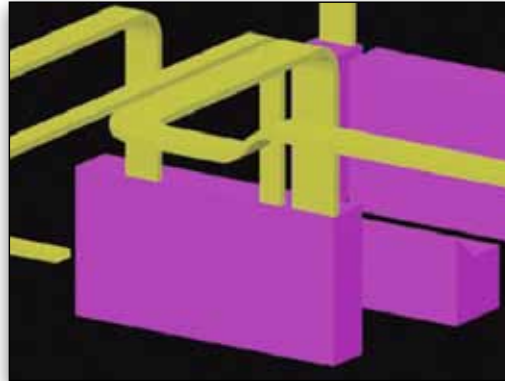
- Generate material take offs and other configurable reports automatically
- Compatible with standard office software such as Microsoft Access and other widely used formats

Integration

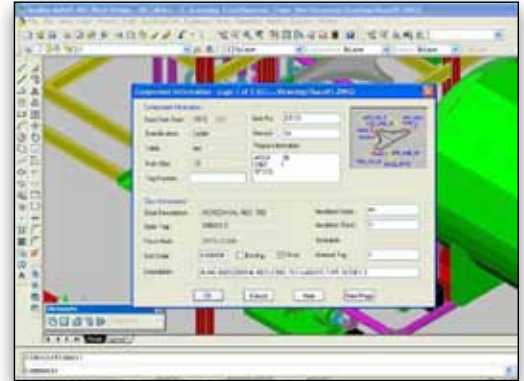
- Uses the same project structure as other AutoPLANT products with both 2D and 3D data in the same database

Publish i-models Within AutoPLANT

- Create AutoPLANT i-models directly from the AutoPLANT Equipment interface
- Create project milestone archive drawings including embedded project data
- Review 3D design models and resolve clashes with Bentley Navigator



Electrical models can be used to perform design reviews, eliminate interferences, and test design alternatives.



Intelligent component data is maintained in the project database.