

# AutoPLANT ISOMETRICS

## Intelligent Isometric Drawings

AutoPLANT Isometrics XM Edition is an intelligent isometric drawing application allowing either direct specification-driven isometric drawing creation or automatic extraction from a 3D model. Direct isometric drawing creation allows you to create piping isometrics without first having to build a 3D model. The Auto-Iso feature automatically produces piping isometric drawings from the AutoPLANT Piping module. The combination of these two techniques ensures that for all types of projects—whether new design or retrofit work—piping system designers have a suitable tool for creating piping isometrics.

### Manual Isometric Drafting

The manual mode of AutoPLANT Isometrics allows you to generate isometrics from scratch. Input and placement options are the same as those employed by the AutoPLANT Piping application, with component information that is based on an external specification database. Manual drafting with the XM Edition is easier than ever before without needing projects nor databases. You can also use the manual isometrics mode to edit and perform cleanup on isometrics created using the Auto-Iso function.

### Automatic Isometric Generation from AutoPLANT Piping

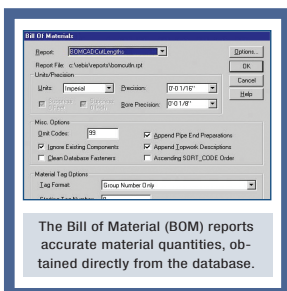
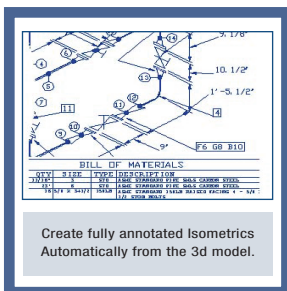
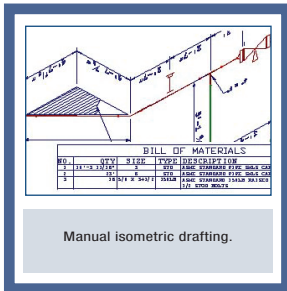
Since the AutoPLANT Isometrics module is fully integrated with the AutoPLANT Piping module, the integrity of the data used to create the piping isometrics is ensured.

### Multiple Material Reporting Formats

Accurate material quantities, obtained directly from the database, can be summarized in several formats to suit a variety of requirements. A bill of materials (BOM) table can be placed directly on the drawing, or a material take-off (MTO) report can be generated separately from the drawing. These files may also be exported to a number of common database and spreadsheet applications. In addition, pipe lengths may be reported in several ways. Cut lengths for each pipe segment can be adjusted to reflect thread engagement of screwed fittings or insertion depth of socket welded and slip-on fittings. Pipe lengths may be reported for each pipe segment or as total quantities.

### Customization Tools

AutoPLANT Isometrics provides a variety of customization tools so that you can modify the software to handle the specific needs of a project, or supplement the toolset provided. This allows advanced users or those with special needs to easily extend functionality.



## AUTOPLANT ISOMETRICS AT-A-GLANCE

### Customization Tools

- Project Administrator, a highly intuitive graphical user interface with tabbed dialogs, creates/modifies project configurations
- Class Editor for creation and modification of the module and component scripts and methods in a custom configuration

### Isometric Drafting

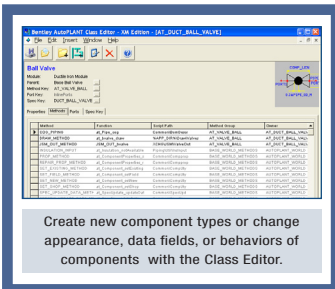
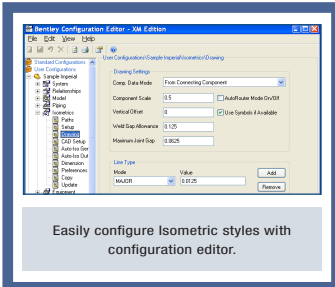
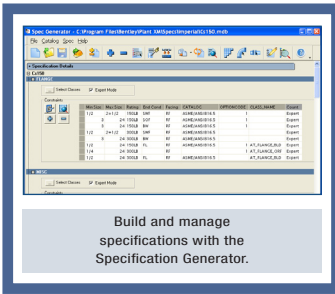
- Manual drafting of isometrics using advanced layout Automatic isometric generation from AutoPLANT Piping
- Partitioning of piping systems according to a number of practical characteristics to create either fabrication ISOs, system ISOs, or spool ISOs
- Cross-model drawing extraction allowing isometrics to be created from multiple models

### Welds

- Automatic numbering and annotation of welds
- Addition of weld numbers to the drawing either one at a time or all at once using the automatic annotation features
- New welds can be added or renumbered if the layout is modified

### Material Reporting

- Query components to be included in a report that is based on one or more criteria across one or more drawings
- Filters can be saved and applied throughout the project
- Configurable reports including fields to report, grouping, and headings



## SYSTEM REQUIREMENTS

### Processor

Intel Pentium 500 MHz or greater

### Operating System

Microsoft Windows 2000 SP4 or later Microsoft Windows XP Professional SP1A or later

### CAD Software

- AutoCAD: 2004, 2005, 2006 (SP1), 2007
- AutoCAD Mechanical Desktop: 2004 (plus SP1), 2005, 2006 (SP1a)
- Architectural Desktop: 2004 (plus SP1), 2005, 2006 (SP1)
- Building Systems: 2004, 2005, 2006 (SP2)
- AutoCAD Mechanical 2004, 2005, 2006 (SP1a)

### Memory

512 MB (Typically more results in better performance)

### Free Disk Space

1.5 GB

## CALL TODAY FOR MORE INFORMATION

Bentley Systems, Incorporated provides software for the lifecycle of the world's infrastructure. The company's comprehensive portfolio for the building, plant, civil, and geospatial vertical markets spans architecture, engineering, construction (AEC) and operations. With 2006 revenues exceeding \$350 million, Bentley is the leading provider of AEC software to the Engineering News-Record Design 500 and major owner-operators.

For more information, visit [www.bentley.com](http://www.bentley.com) or call 1-800-BENTLEY.

**Bentley North American Headquarters**  
Bentley Systems, Incorporated  
685 Stockton Drive  
Exton, PA 19341 USA  
Phone: +1 800 BENTLEY (+1 800 236 8539)  
Outside the US +1 610 458 5000  
Fax: +1 610 458 1060

**Bentley International Headquarters**  
Bentley Systems Europe B.V.  
Wegalaan 2  
2132 JC Hoofddorp  
THE NETHERLANDS  
Phone: +31 23 556 0560  
Fax: +31 23 556 0565

