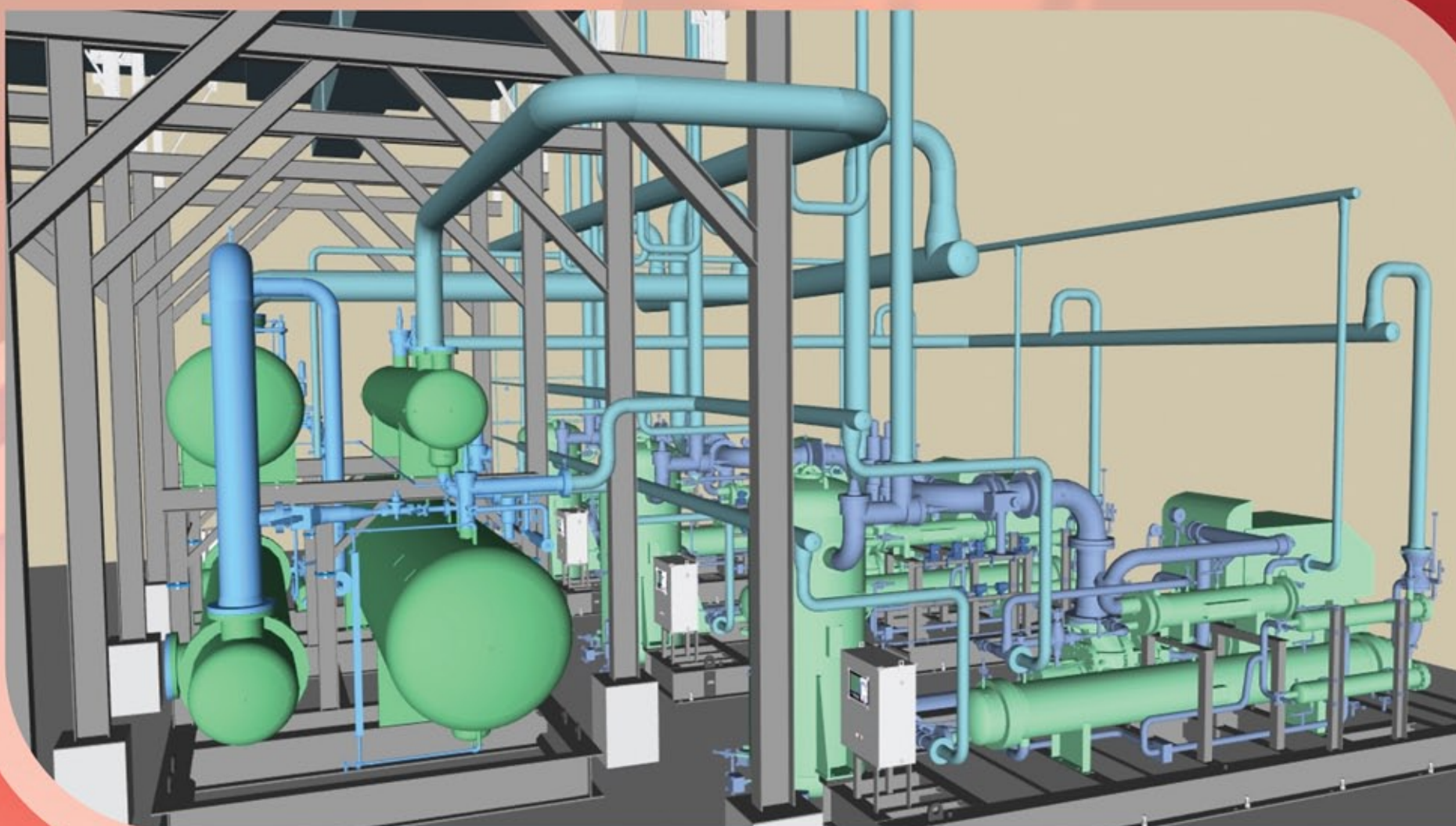


# PLANT FINALIST

BE AWARDS  
OF EXCELLENCE



## PLANT MULTI-DISCIPLINE DESIGN

The \$7 million Moses Lake Expansion project will double Renewable Energy Corp.'s capacity to produce polysilicon at its Washington state facility. The project is comprised of two large brine chilling systems supplying low-temperature refrigeration using environmentally friendly R-507, a nonozone depleting refrigerant.

YORK's use of Bentley software, including AutoPLANT, provided seamless integration and streamlined workflows among engineering design, supply chain management, and the fabrication department. In addition, client deliverables have been improved because the client can see how the new installation will impact existing plant equipment and structure. Providing 3D models to perform virtual tours also eliminates installation and maintenance interferences prior to equipment fabrication and delivery.

**Renewable Energy Corp,  
Moses Lake Expansion**

York International / A Johnson Controls Company