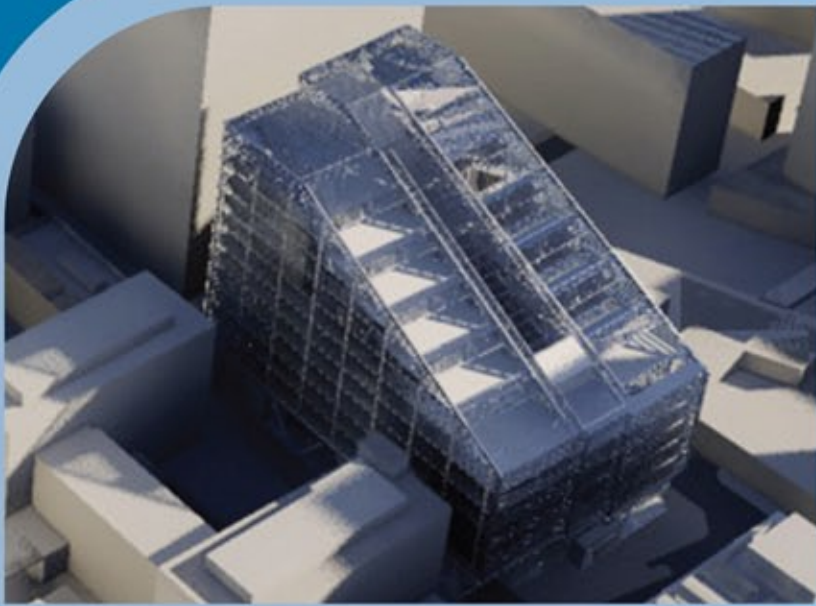


BUILDING FINALIST

BE AWARDS
OF EXCELLENCE



BIM FOR ARCHITECTURE

The Moorgate Telephone Exchange building on Fore Street in London occupies about 115,000 square feet of space on two basement and ground levels and five upper levels, together with six small mezzanine levels in between each of the principal upper floors. The Fore Street post office counter unit totals 5,000 square feet on basement and ground floor levels.

Using Bentley Architecture, the design concept moved from 3D massing, site context, and lighting studies to geometric 3D modeling. Plans and sections were instantly available to begin a two-way design process – 3D and 2D – to optimal accuracy and coordination. Within a TriForma Extension for MicroStation managed environment, the use of datasets, 3D cells, and parametric elements allowed for fast updates to the 3D model and 2D plans.

Fore Street
HKR Architects