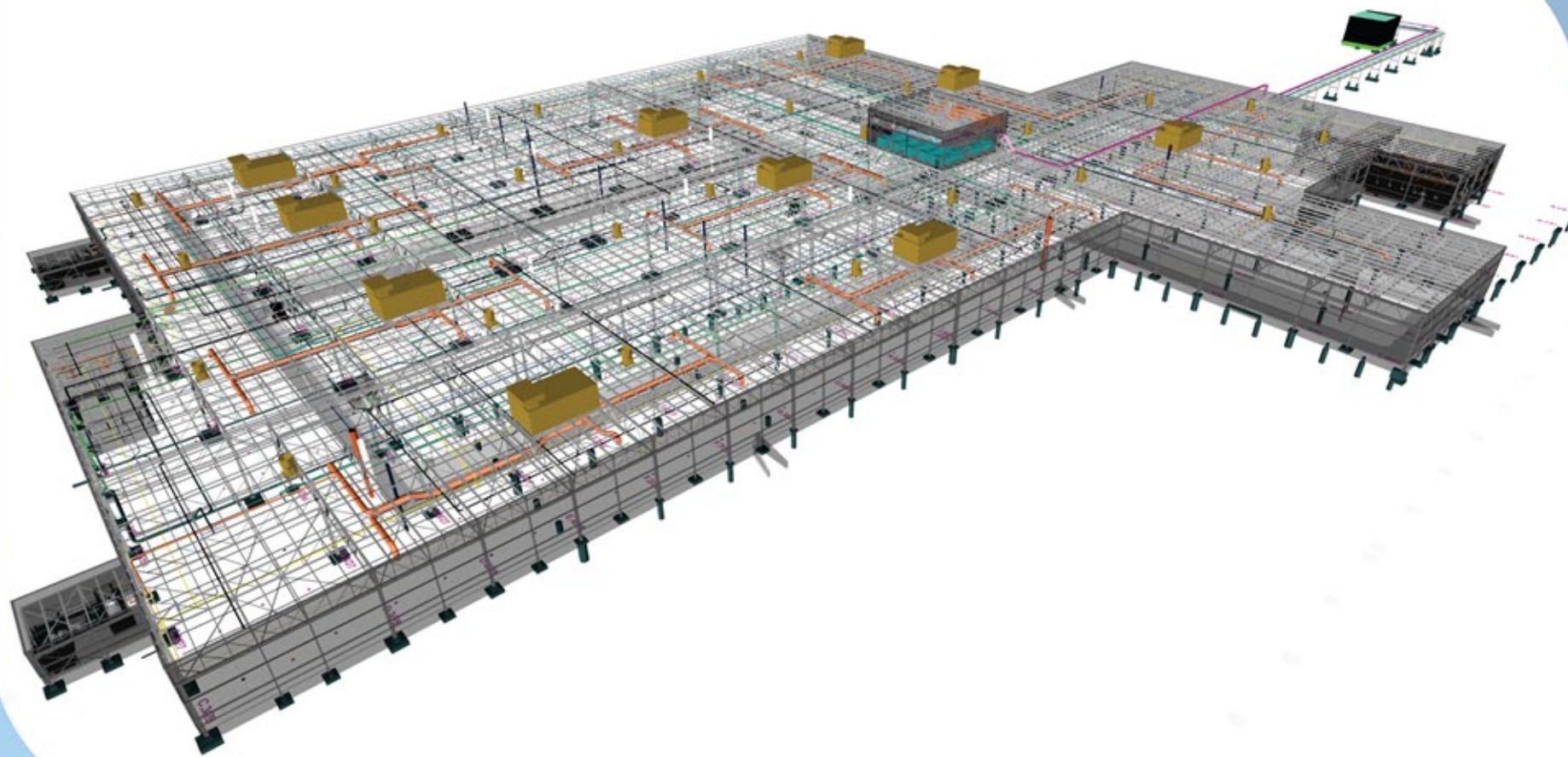


BUILDING FINALIST

BE AWARDS
OF EXCELLENCE



BIM FOR MULTIPLE DISCIPLINES

General Motors is expanding its Toledo, Ohio, transmission plant to produce a new Hydra-Matic 6L80 six-speed, rear-wheel-drive automatic transmission for full-size SUVs and trucks. The project includes 275,000 square feet of facility renovation and 475,000 square feet of new construction. A large multidisciplinary team comprised of architects, engineers, contractors, detailers, and fabricators from a number of companies collaborated to design and build the facility.

GHAFARI Associates led the implementation and deployment of 3D-enabled delivery methodologies and associated technologies. The team used Bentley's integrated BIM solutions and ProjectWise collaboration servers to design and fully coordinate the architectural, structural, and major facility systems. It relied on 3D models to integrate facility systems and eliminate thousands of design conflicts prior to construction, and produced highly coordinated construction documents and installation drawings for architectural, structural, and MEP systems.

3D Enabled Design/Construction for General Motors Toledo Transmission Plant Expansion

General Motors and GHAFARI Associates L.L.C.