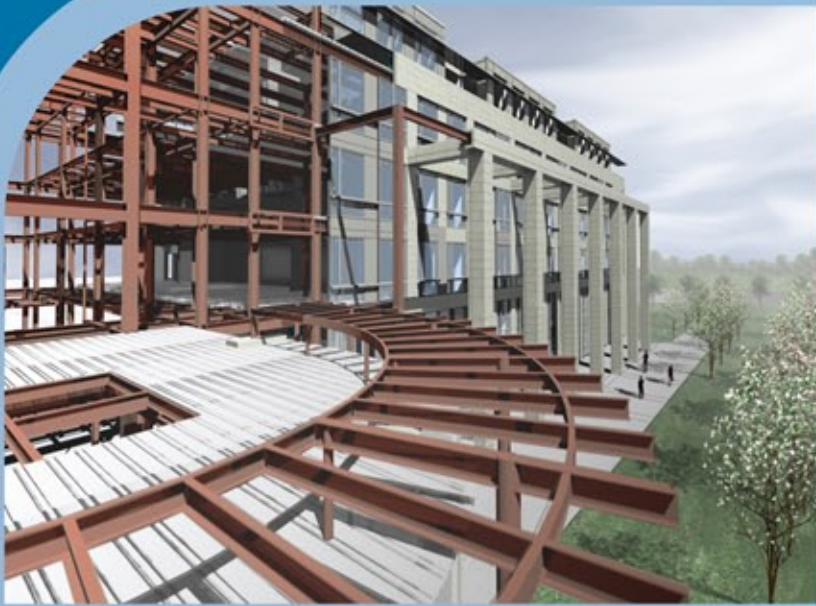


# BUILDING FINALIST

BE AWARDS  
OF EXCELLENCE



## BIM FOR VISUALIZATION AND SIMULATION

PSA-Dewberry teamed with Koetter/Kim & Associates Inc. to plan and design a new \$87 million federal courthouse for the General Services Administration in Rockford, Illinois. The new facility will accommodate the 10-year space requirements of the District Court and court-related agencies on a site large enough to also accommodate its 30-year expansion requirements. The courthouse will house five courtrooms, additional clerks' space, and 52 secure interior parking spaces below the building.

The use of Bentley's BIM solutions enabled the team members to move past their own discipline's viewpoint to see the interactions of the complete building. The unique aspect of this project and the use of BIM also allowed PSA-Dewberry to flatten the hierarchy of design to production so a member usually assigned to a specific area like design was now also charged with getting those elements placed into the model.

**United States Courthouse**

Dewberry