

# BENTLEY® GEO WEB PUBLISHER™

## A comprehensive solution for publishing geospatial information over the Web

Your data is incredibly valuable. You need to share it within in your organization, with other organizations, and with broader public audiences. How you present the information depends upon the audience and how they use the information.

Bentley® Geo Web Publisher™ is an easy-to-implement, high performance Web server. It enables a wide range of applications such as municipal information systems, image or drawing archives, map based navigational sites, project sites, and public information portals. Integrated vector and image server engines publish hybrid vector/raster datasets and a wide range of formats, making it easy to incorporate drawings, maps, models, aerial photography, and images within custom browser presentations.

Bentley Geo Web Publisher provides functionality for data integration, web site creation and layout, web site administration and maintenance, as well as end-user tools providing for map navigation, querying, analysis and reporting.

A range of programming and authoring tools support rapid development of intuitive HTML or Windows client interfaces. To facilitate rapid Web site development, publishers can opt to use an intelligent wizard that gets the site built and running quickly. It guides choices for layout, colors, display controls, tools, and other interface elements as well as map management. Designed for rapid deployment, Bentley Geo Web Publisher is simple to install and easy to administer.

### Data Integration

Bentley Geo Web Publisher's data model facilitates the integration of multiple graphical and non-graphical data sources into one homogenous web interface. Native Oracle Spatial data can easily be published live. Geo-referenced tabular data, virtually any type of raster image files, DGN, DWG, and MicroStation GeoGraphics® projects can also be combined into intelligent presentations. Multiple tabular data sources can also be integrated even if they are not directly related to maps. The structure is optimized for organizations like municipal environments where information is highly inter-related.

### Intuitive Tools to Build and Maintain Geospatial Web Sites

Web site options include web site layout and graphical presentation and configuration of geospatial building blocks such as querying, reporting, or map display. Web sites can be efficiently updated as new needs arise with task oriented tools for adding or modifying queries and reports or adding new layers of information. Multiple links can be created to integrate the geospatial site with other pages of corporate websites or with documents such as metadata, customer support files, or other pertinent information.

### Reporting and Analysis

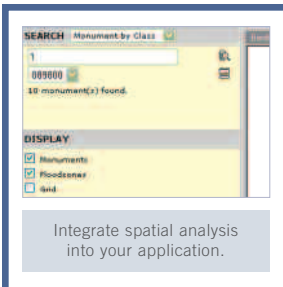
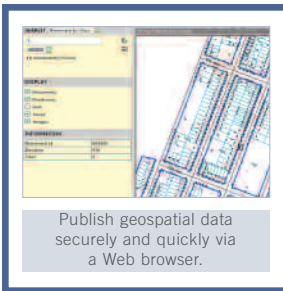
Powerful end-user functionality is delivered in Bentley Geo Web Publisher. Users can generate reports and perform spatial analysis from the Web browser. Various options are available to create efficient queries, both simple and complex. Open-ended questions as well as streamlined queries can be presented to your end-users, minimizing the amount of time necessary to find information. Reports can generated from queries, spatial analysis, or other means such as multiple feature selection. These reports may include multi-tabbed views of textual data and multimedia information, as well as, downloadable files.

### Map Viewer

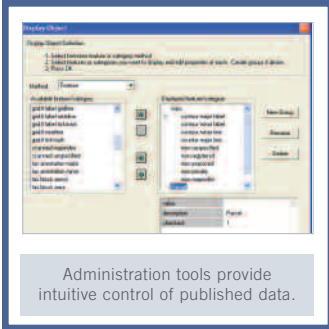
An end-user client optimized for enhancing the map experience and ease-of-use is delivered with Bentley Geo Web Publisher. Functions such as tooltips, measure, buffer, and scale are dependent on the data presented, that is, the Map Viewer is "map aware". Enhanced capabilities such as selectable features, scale-dependent display control, and analysis functions are provided with the Map Viewer.

### High-Performance Internet Data Server

Bentley Geo Web Publisher provides high-performance publishing of vector, raster, and database information. There is no need to simplify your data in order to view it over the Web. Full fidelity publishing including 3D hybrid displays of vector and raster information is readily available via a Web browser.



## BENTLEY GEO WEB PUBLISHER AT-A-GLANCE



### Map Viewer application

- View control (zoom, pan, window area)
- Measurements
- Map Scale based display
- Copy view
- Zoom to scale
- Scaled plotting
- Topology operations:
- Select from buffer
- Select from polygon
- Multi selection

### Client-based Printing

- High-quality prints of any size
- Scale control
- Windows printer support

### Dynamic Hyperlink Creation

- Hyperlinks to graphic elements or text within a project or design
- Access to project information from the enterprise database
- Automatically generated hyperlinks to graphic elements or published HTML lists of database records

### File Formats

- MicroStation® DGN files with raster attachments
- MicroStation CEL files
- AutoCAD DWG and DXF files (AutoCAD 2000/2000i/2002 files)
- MicroStation GeoGraphics projects, including DGN and raster maps
- BMP 1, 4, 8, 24 Bits, Lined; Uncompressed, RLE4 or RLE8
- CALS 1 Bit, Lined; CCITT Group 4 Compression
- CIT (Type 24) 1 Bit, Lined, Multi-resolution possible; CCITT Group 4
- COT (Type 2) 8 Bit, Lined or Tiled, Multi-resolution possible; Uncompressed
- ECW (ERMapper images)
- FPX 8, 24, 32 Bit, Tiled, multi-resolution; JPEG and Single Color
- GeoTiff 1, 8, 24 Bit, Matrix, ModelTiePoints, ModelPixelScale tags, Lined, Stripped or Tiled, Multi-resolution possible; Deflate
- CCITT Group 3, CCITT Group 4, Packbits and JPEG
- HMR 1, 8 Bit, Tiled, Multi-resolution; CCITT Group3, CCITT Group4, Packbits and Deflate
- Image Manager™ Projects 1, 8, 24, 32
- ImageMapped 4, 8 Bit, Lined; Uncompressed
- Image RGB 24 Bit, Lined; Uncompressed

- iTIFF 1, 8, 24 Bit, Stripped or Tiled Multi-resolution; Deflate, CCITT Group3, CCITT Group4, Packbits, RLE and JPEG
- JFIF/JPEG 24 Bit, Lined; JPEG Compression
- PCX 1, 4, 8, 24 Bit, Lined; Uncompressed
- PNG 1, 8, 24, 32 Bit, Lined; Deflate
- PSS 1, 8, 24, 32 Bit
- Raster Manager™ Projects 1, 8, 24, 32 Bit
- RGB (Type 28) 24 Bit, Line or tiled; Uncompressed
- RLC 1 Bit, Lined
- RLE (Type 9) 1 Bit, Lined or Tiled, Multi-resolution possible; RLE Compression
- SID (MrSID images)
- Sun Raster 4, 8 Bit, Lined; Uncompressed
- Targa 24 Bit, Lined; Uncompressed
- TG4 (Type 24) 1 Bit, Tiled, Multi-resolution possible; RLE Compression
- TIFF 1, 8, 24 Bit, Lined, Stripped or Tiled, Multi-resolution possible; Deflate

### Simple Administration

- Easy deployment
- Local and remote access
- Access rights for the administration tools
- Automatic Web server configuration

### Map Author

- Easy to use tool for creation of maps from the data sources setup in the administration tool
- Simple thematic symbology definition
- Scale navigation setup

### Web Site Author

- Save and reload a Web site design project
- Expandable and editable source code
- Designed as a management tool
- Rich and easy query and reports creation tools
- Task oriented workflow for adding queries and reports

### Web Sites

- Generated with the site author
- Include the Map Viewer
- Map navigation, query, simple and multiple selection of elements
- Topology analysis (buffer)
- Pre-formatted reports, multi tabbing, downloadable csv file

## BENTLEY GEO WEB PUBLISHER SYSTEM REQUIREMENTS

- Processor: Intel Pentium-based or AMD Athlon-based PC or workstation
- Operating System: Microsoft Windows 2003 Server
- Prerequisite Application: none
- Memory: 256 MB (512 MB or more typically results in better performance).
- Hard Disk: 1 GB minimum free disk space
- Input Device: Mouse or other Windows pointing device
- Output Device: Most industry-standard devices are supported. Works with output devices supported by Windows.
- Video: Windows-supported graphics card.

## ABOUT BENTLEY

Bentley Systems, Incorporated provides software for the lifecycle of the world's infrastructure. The company's comprehensive portfolio for the building, plant, civil, and geospatial vertical markets spans architecture, engineering, construction (AEC) and operations. With 2004 revenues exceeding \$300 million, Bentley is the leading provider of AEC software to the Engineering News-Record Top 500 Design Firms and major owner-operators.

For more information, visit [www.bentley.com](http://www.bentley.com) or call 1-800-BENTLEY.

### Bentley Worldwide Headquarters

Bentley Systems, Incorporated  
Exton, PA, USA  
+1 800 BENTLEY  
+1 610 458 5000

### Bentley International Headquarters

Bentley Systems Europe B.V.  
JC Hoofddorp  
THE NETHERLANDS  
+31 23 556 0560

